



# The Marina Coast Water District

Adopted Operating and Capital Improvement Budget  
Fiscal Year 22/23



11 Reservation Road, Marina, CA 93933  
(831) 384-6131  
[customerservice@mcwd.org](mailto:customerservice@mcwd.org)  
[www.mcwd.org](http://www.mcwd.org)

# TABLE OF CONTENTS

1	Memorandum
11	Board of Directors
12	Rates
15	Budget Summary
16	Budget Comparison
17	Revenue Budget
24	Expense Budget
25	Departments
50	Capital Equipment Budget
52	Capital Improvement Budget
54	Investments
56	Debt Obligations
60	Reserve Funds
64	Positions
67	Appendix A - Capital Improvement Projects
89	Appendix B - Salary Schedules



# MEMORANDUM

On behalf of the District staff, it is an honor to present the Fiscal Year 2022-2023 Adopted Budget. This budget was developed with a focus on cost containment of system operations and infrastructure needs and is designed to assist in meeting the strategic elements of the Board's 2020 strategic plan which are:

**Water Sources** – manage and protect our current water sources and find alternative water sources

**Infrastructure** – provide high-quality water distribution systems and efficiently operating wastewater systems to serve existing and future customer

**Fiscal Planning** – manage public funds to assure financial stability, prudent rate management, and demonstrate responsible stewardship

**Strategic Partners and Public Affairs** – build our relationships with the State, Federal, Regional, SVBGSA, and local public and non-profit agencies

**Organization Health/Personnel** – recruit and retain a highly qualified, diverse, and inspired workforce that delivers the essential services of the District while providing outstanding customer service

**Administrative Management** – create, maintain, update and implement policies and procedures to ensure sound management of the District



# ABOUT THE DISTRICT



In 1958, a local group of dedicated citizens, known as the Marina Community Service Corporation, proposed the formation of a municipal-owned water system with boundaries to coincide with the existing Marina Fire District (approximately 1,600 acres). Two years later, the Marina County Water District was formed by a vote of the 766 registered voters of the then unincorporated city of Marina.

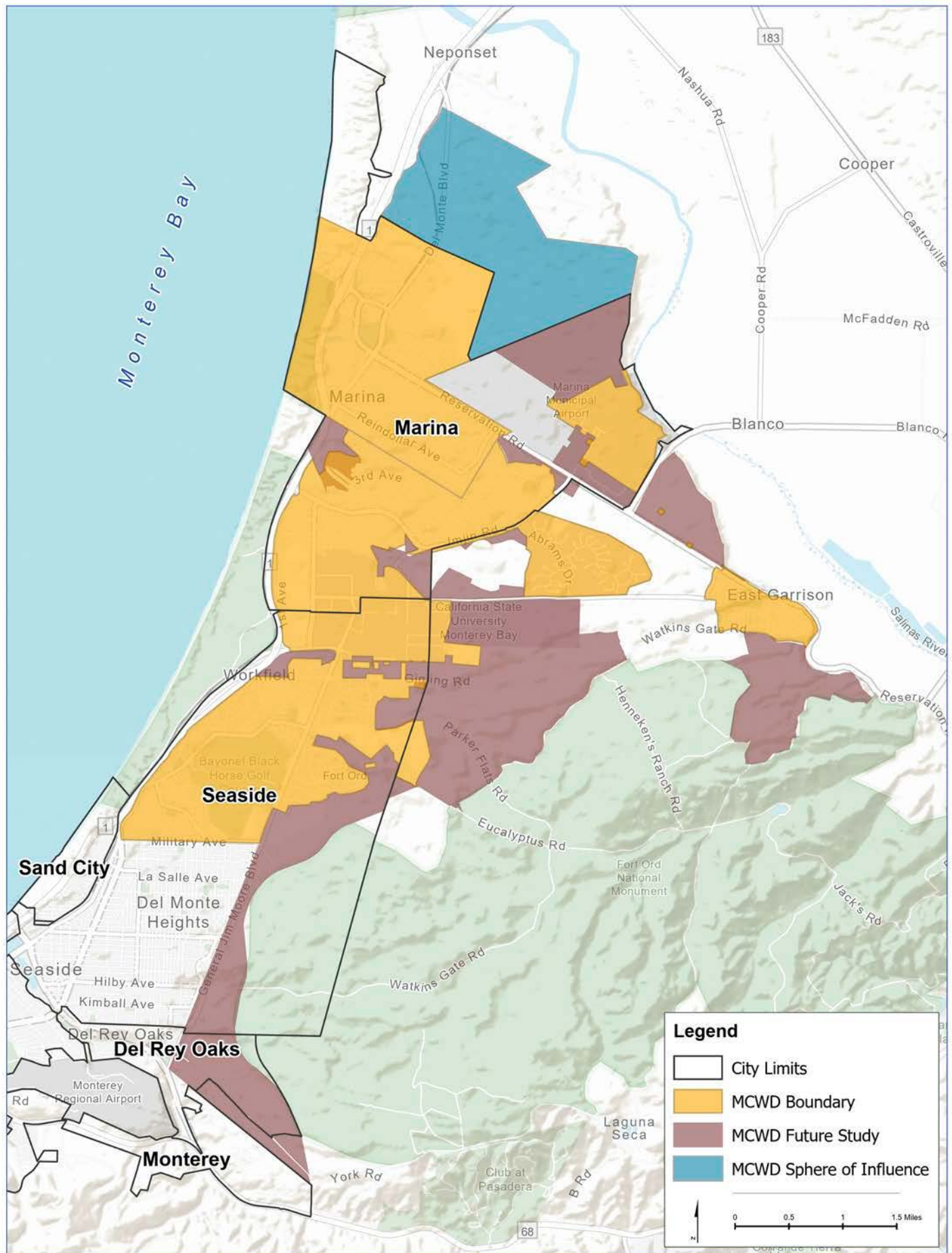
Long before the District was formed, studies revealed that seawater had been intruding into the area's groundwater supply, because more water was being pumped from the aquifers each year than was being replenished naturally. In 1983, the District abandoned pumping from the 180-foot well because of saltwater intrusion, and, from 1983 to 1989, drilled three deep wells in the 900-foot aquifer. These wells provide Marina with its current source of water. In 1997, the District began operating a desalination plant, capable of producing 13 percent of its water supply, to supplement well water. The plant remained in service for several years before a sudden rise in electricity costs made it uneconomical to continue operating. Because of its diminishing water supply, the District continues to seek new water sources and expand its conservation programs.

In 1970, Marina voters responded to an increasing number of septic system failures and requests to meet the community's growing sanitation needs by constructing a sewage treatment plant and disposal system, which was financed by the sale of \$1.3 million in sewer bonds. The District operated the plant until 1993 when an agreement with the Monterey Regional Water Pollution Control Agency made it possible for Marina's wastewater to be treated at the regional treatment plant. Though the District ceased treating wastewater, it continued to operate and maintain Marina's sewer system. For its first 35 years of operation, the District was known as the Marina County Water District. But in 1994, its name was changed to Marina "Coast" Water District to avoid possible confusion of being an adjunct to the Monterey County government.

With the closure of the Fort Ord military base in 1997, the Army contracted the District to operate its water and wastewater systems and, in 2001, officially transferred the systems to the District. Since combining services and resources, the District improved its water distribution and storage efficiency while decreasing operating costs.

Marina Coast is a county water district that is a Subdivision of the State of California and was established under Water Code Division 12 in 1960. We are an independent special district delivering water, recycled water, and sewer services. Our service area includes the entire community of Marina and portions of Seaside, Del Rey Oaks, and Monterey, and a portion of the County at the East Garrison community.

We currently serve approximately 37,000 customers through a water system with 215 miles of water lines, 7 domestic production wells with a capacity of 20 MGD with an additional 3MGD of standby capacity. 8 storage tanks, and 6 pumping stations feed our 5 pressure zones. The Sewer system consists of 155 miles of gravity mains and 6.5 miles of force mains in the system with 20 sewer lift stations with average flows of up to 2.2MGD. We deliver that septage to the RTP for processing and redelivery to us through the tertiary system or through PWM. Our Recycled water system is our newest service. Currently, the system has 13.5 miles of waterline and 1 tank with a max day delivery of 1.37MGD to MCWD.



# COST CENTERS

MCWD operates as a single enterprise fund with 6 separate cost centers. Under District Ordinance No. 43, the District maintains separate cost centers to ensure that revenues and expenses are appropriately segregated and maintained for the Marina systems, the Ord Community systems, the Recycled Water system, and the MCWD Groundwater Sustainability Agency (GSA).

**Water Cost Centers** – account for their operations through all Departments of the District.

**Marina Water** – generates its revenue from potable water sales through water connections within Central Marina and other sources. Other sources include capacity fees and bond proceeds to fund capital projects.

**Ord Community Water** – generates its revenue from potable water sales through water connections within the Ord Community, comprised of several land-use jurisdictions, and other sources. Other sources include capacity fees and bond proceeds to fund capital projects

**Wastewater Collection (Sewer) Cost Centers** – account for their operations through the Administration, Operations & Maintenance, and Engineering Departments of the District.

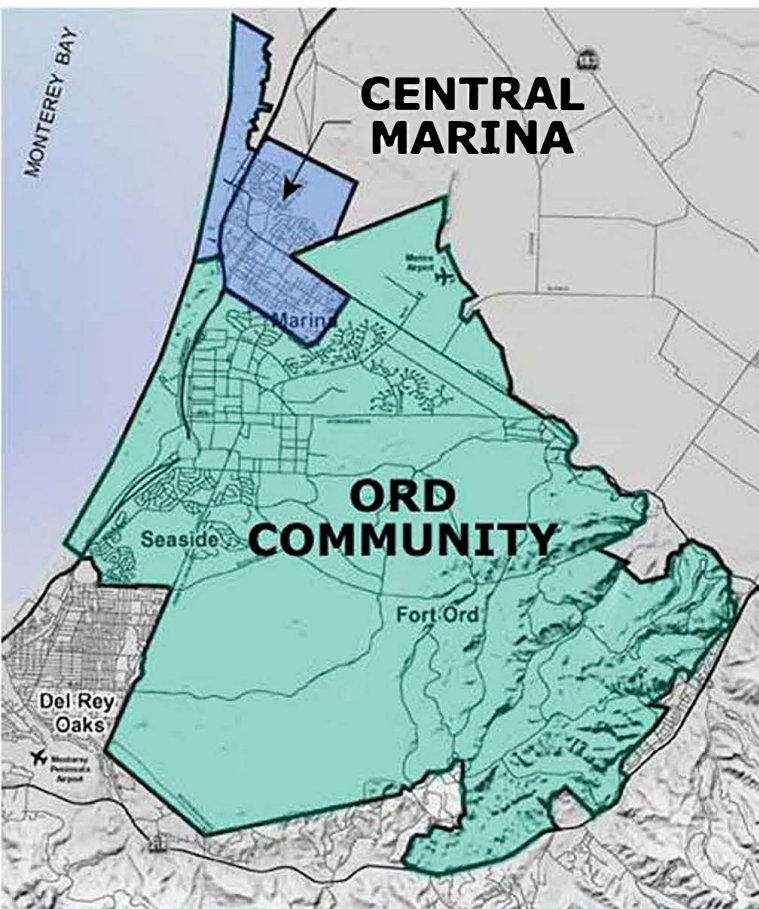
**Marina Sewer** – generates its revenue from sewer collection fees through sewer connections within Central Marina and other sources which include capacity fees and bond proceeds to fund capital projects.

**Ord Community Sewer** – generates its revenue from sewer collection fees through sewer connections within the Ord Community, comprised of several land-use jurisdictions, and other sources. Other sources include capacity fees and bond proceeds to fund capital projects.

**Recycled Water Cost Center** – accounts for its operations through the Administration, Operations & Maintenance, and Engineering Departments of the District and generates its revenue from recycled water sales and other sources which include capacity fees and loan proceeds.

**Groundwater Sustainability Agency Cost Center** – accounts for its operations through the Administration and Water Resources Departments of the District. It generates its revenue through water source fees from the Monterey subbasin and other sources such as grants. Currently, the District is the only entity that pumps groundwater from the Monterey subbasin.

Map showing area jurisdictions for both Central Marina and the Ord Community.



# COST ALLOCATION

Direct costs are allocated to the appropriate cost centers. Other costs associated with specific functions are allocated among the four primary cost centers – Marina Water, Marina Sewer, Ord Community Water, and Ord Community Sewer using various allocations that are based on factors such as water rights, miles of pipeline, number of customers, etc.

District costs that are not dedicated to a specific cost center are shared among the four primary cost centers. The sharing of these expenses, in turn, creates efficiencies and cost savings for administrative functions for the two service areas that would otherwise not be realized. The District uses the expense ratio method to allocate these shared expenses which represent approximately 15% of the District's Operating Expenses. This approach is also referred to "as all others" – essentially general benefit functions mirror how the first 85% of the District's costs are accrued. These costs include a major portion of Administration salaries and benefits costs, Board-related costs, information technology-related costs, accounting services, rate study costs, etc. These functions serve the District as a whole and cannot be reasonably allocated on a direct basis or by one of the above metrics. The District contracted with Carollo Engineers in 2017 to review the

District's cost allocation methods and provide a Cost Allocation Plan that can be found on the District's website at the following link:

<http://www.mcwd.org/docs/financials/MCWD%20Cost%20Allocation%20Plan%20f%20Feb.pdf>

For FY 2022-2023, the assigned percentages are as follows:

- Marina Water 26%
- Marina Sewer 5%
- Ord Community Water 57%
- Ord Community Sewer 12%

Over the past several years, direct operating expenses throughout the Ord Community have increased causing its allocation percentages of shared expenses to increase which stands to reason as it correlates with the additional administrative effort to process, monitor, and report the costs. However, for FY 2022-2023, the Ord Community allocation percentages each dropped 1% from the previous fiscal year's allocation.



Scan the QR Code to visit the link:

<http://www.mcwd.org/docs/financials/MCWD%20Cost%20Allocation%20Plan%20f%20Feb.pdf>

# DISTRICT RESERVES

A key element of prudent financial planning is to ensure that sufficient funding is available for current and future operating, capital, and debt service needs. Under the District's Reserve Funds Policy, the District has established and maintains both Restricted Reserve Funds and Board Designated Reserve Funds with target levels to work towards to ensure that it provides reliable service and maintains overall financial strength. The following are the projected balances of the Reserve Funds for FY 2022-23 and the funding status of each fund based on the target levels established in the Reserve Funds Policy:

Reserve Funds Restricted Reserve Funds	Target Level	Minimum (Per Policy)	Maximum (Per Policy)	Minimum (Amount)	Maximum (Amount)	Estimated balance at 6/30/2023	Over/Under Funded of Minimum	Over/Under Funded of Maximum	Notes
a. Bond/Debt Reserve Fund	Established by funding source	None	None	\$171,828	\$171,828	\$ 171,828	-	-	Represents the Debt Service requirement for the SRF Loan C-06-8184-110
b. Capital Reserve Fund	N/A	None	None	-	-	-	-	-	Contributions from outside sources for CIP or CIP carryover funds. District not utilizing.
c. Capacity Charge Reserve Fund	Development Driven	None	None	\$17,419,263	\$17,419,263	\$17,419,263	-	-	Restricted to design and construction of capital facilities to increase system capacity
<b>Designated Reserve Funds</b>									
a. Capital Replacement & Improvement Fund	40% 20% prior asset depreciation	None	None	\$ 15,382,868	\$ 15,382,868	\$ 4,602,642	(\$ 10,780,226)	(\$ 10,780,226)	Target level based on 40% water and 20% sewer prior year accumulated asset depreciation
b. Admin. & General Fund	Min/Max for Dist. as a whole	\$ 50,000	\$ 250,000	\$ 50,000	\$ 250,000	\$ 200,000	\$ 150,000	(\$ 50,000)	Funding may adjust based on inflation
c. Emergency Fund	Fluctuates based on Net Cap Assets	1/2% of Net Capital Assets	2% of Net Capital Assets	\$ 1,083,155	\$ 4,332,621	-	(\$ 1,083,155)	(\$ 4,332,621)	The District has not funded to date
d. Rate Stabilization Fund	Fluctuates based on Annual Debt Svc.	None	25% annual Aggregate DS	-	\$ 434,491	-	-	(\$ 437,491)	The District has not funded to date
e. Operating Reserve Fund	Fluctuates based on Op Exps.	25% operating expenses	50% operating expenses	\$ 5,523,007	\$ 11,046,014	\$ 5,979,365	\$ 456,358	(\$ 5,066,649)	For unanticipated operating expenses
<b>Totals</b>				<b>\$ 39,630,121</b>	<b>\$ 49,040,084</b>	<b>\$ 28,873,098</b>	<b>(\$ 11,257,023)</b>		

# KEY ASSUMPTIONS

## Revenues

Projected revenues in Marina and Ord Systems are based on current customer accounts and projected development activity at the service rates approved by the Board in January 2018.

- Includes a 3% growth rate in the Ord Community for residential accounts (single-family & multi-family) and no growth factor for Central Marina
- 4% rate increases for water and sewer rates for Central Marina and a 4% rate increase for water and a 3% rate increase for sewer in the Ord Community based on the 5-year rate study conducted in 2017-2018 and approved by the Board on January 22, 2018. Water rates consist of a fixed charge and commodity rates.
  - The fixed charge generates the needed revenue to cover the District's fixed costs which include:
    - Base Costs – operating and capital costs incurred by the water system to provide a basic level of service to each customer.
    - Peak Costs – those operating costs incurred to meet peak demands above base demand which include basic water supply and distribution costs.
    - Customer Costs – Fixed expenditures that relate to operational support such as accounting, billing, customer service, administrative and technical support.
    - Service Costs – Meter maintenance costs and capacity-related costs including debt service.
  - The commodity rates generate revenue to cover the base, peak, and customer costs directly related to the production and distribution of water production. The rate study included the change from a 3-tier system to a 2-tier system for commodity rates. The rate study can be accessed on the District's website by clicking on the following link:

<http://www.mcwd.org/docs/financials/MCWD%202018%20CoS%20Rate%20Study%20Final%20Report.pdf>



Scan the QR Code to visit the link:

<http://www.mcwd.org/docs/financials/MCWD%202018%20CoS%20Rate%20Study%20Final%20Report.pdf>

- Wastewater collection rates consist of fixed costs to collect and transmit to the Monterey One Water Agency (M1W). The rate is calculated based on the total projected costs of the collection system (Base Costs and Customer Costs) divided by the projected equivalent dwelling units (EDU) of the District.
- Monthly rates with the rate increases for the Marina customers and Ord Community customers are as follows:

<b>Effective January 1, 2023</b>		
<b>Water Rate (monthly)</b>	<b>Marina</b>	<b>Ord Community</b>
Meter Service Charge	\$28.34	\$48.94
Tier 1 (0 - 10 HCF)	\$3.80	\$4.90
Tier 2 (10+ HCF)	\$5.790	\$9.55
Flat Rate Billing	N/A	194.4
Average monthly bill (10 HCF)	\$66.34	\$97.94
<b>Wastewater Collection Rate (monthly)</b>	<b>Marina</b>	<b>Ord Community</b>
Flat Rate (per edu)	\$17.98	\$38.15

- Wheeling Charges increased from \$2,000 per month to \$2,997.67 per month based on the cumulative Engineering News Record (ENR) 20-City average Construction Cost Index (CCI) from 2009 to 2022 of 40.98%.
- Per District Ordinance 6.089.090 Section B, each July 1st, Capacity Charges will be adjusted by an increment based on the change in the ENR-CCI over the prior year, using the index published for the first quarter of the calendar year, and rounding to the nearest \$25. The CCI for 1st Quarter 2022 is 8.87%.
- Proposed revenue for the Recycled Water System is based on the 2022 rate study conducted by Raftelis and approved by the Board on March 29, 2022.
- MCWD Groundwater Sustainability Agency revenues are generated from its customers, currently the MCWD Marina water and Ord Community water cost centers.
- Board waiver of Section 6.08.070 of the District Codes provides that twenty-five percent of all monthly water charges collected by the District shall be used for long-term water supply projects.

## Expenses

- Salaries adjusted by the February 2022 Consumer Price Index 5.2% per MOU Agreements with the District employee groups
- Increased healthcare costs based on information received as of February 2022 (a 5% increase has been included)
- The Recycled Water Cost Center will be providing recycled water to District customers and staffed by the Operations and Maintenance (O&M) department:
  - Includes 1 additional FTE to the O&M department
    - A Cross Connection Control Specialist
- Groundwater Sustainability Agency (GSA) Cost Center was established and staffed by the Water Resources (WR) department
  - Includes 2 additional FTE to the WR department :
    - An Associate Engineer and a Water Resources Analyst
- Electrical costs increase by 5% per PG&E and an additional 3% for 100% renewable energy
- Principal Debt Service of \$1,749,963 comprised of:

Debt Issuance	Principal
2015 Series A Revenue Refunding Bonds	\$1,130,000
Santa Cruz County Bank Loan (Holman Capital)	102,887
2019 Series Certificates of Participation	340,000
State Revolving Fund Loan C-06-8184-110	177,076

- Capital Improvement Program of \$15,350,283 as follows:

Cost Center	Totals
Marina Water	\$3,419,898
Marina Sewer	29,750
Ord Community Water	4,387,839
Ord Community Sewer	4,302,900
Recycled Water	3,209,896

- Capital replacement reserve funding for Marina and Ord Systems per District practice of \$200,000 for Water cost center funds and \$100,000 for the Sewer cost center funds

## Prior Year Accomplishments



In FY 2021-2022 the District recognized the following accomplishments:

- MCWD's 2020 Annual Financial Report was awarded the Certificate of Achievement for Excellence in Financial Reporting from the Government Finance Officers Association (GFOA). The Certificate of Achievement is the highest form of recognition in governmental accounting and financial reporting. This marks the thirteenth consecutive award for MCWD, indicative of our efforts to be transparent and prudent with our financial reporting. The District is confident that the 2021 Annual Report, submitted to the GFOA in December 2021, will also receive the award.
- In February 2022, the District received an Honor award recognizing MCWD for Engineering Excellence from the American Council of Engineering Companies as a project partner in Pure Water Monterey(PWM). The Pure Water Monterey Project was one of 16 projects throughout the nation recognized by the Council.
- In March 2021, the District approved a critical project to replace aging Army equipment with two 1.6-million-gallon potable water storage tanks (reservoirs) and a new booster pump station (BPS). The project will increase the water storage capacity for MCWD customers by approximately 3 million gallons and replace a 70-year-old storage tank and BPS built by the Army. Funding for the A1/A2 Reservoirs and B/C BPS project is provided through the 2019 Certificates of Participation (COPs) bond proceeds and Capacity Fees. Work began in July 2021 and is estimated to be complete in FY 2022-2023.
- On April 19, 2021, the Board approved two capital projects for immediate procurement: the Interior Reconditioning of the Intermediate Reservoir and the Valve replacement project at the Intermediate Reservoir. The urgency for the projects was that there is no second reservoir at that elevation to provide redundancy during maintenance and rehabilitation. O&M staff devised an alternate method to isolate the reservoir for the duration needed to recondition it. Both projects were completed successfully and timely.
- In January 2022, the MCWD Groundwater Sustainability Agency (GSA) completed its Groundwater Sustainability Plan (Plan) and submitted it to the Department of Drinking Water. The purpose of the Groundwater Sustainability Plan (GSP) is to meet the regulatory requirements outlined in the three-bill legislative package consisting of Assembly Bill (AB) 1739 (Dickinson), Senate Bill (SB) 1168 (Pavley), and SB 1319 (Pavley), collectively known as the Sustainable Groundwater Management Act (SGMA). The Plan provides a path to achieve and document sustainable groundwater management within 20 years following Plan adoption and preserves the long-term sustainability of locally-managed groundwater resources now and into the future.
- In February 2022, the District embarked on the process of shifting from an Automated Meter Reading (AMR) System to an Advanced Metering Infrastructure (AMI) system by replacing AMR meters and registers with AMI. The District has applied for Federal Grant funding that will assist in funding the necessary AMI infrastructure.
- Operations and maintenance of the District's water and wastewater systems which included 5,890 inspections, repairs to 56 feet of main and service lines, 103 miles of pipe cleared, and 300 valves exercised.

## Conclusion

We would like to thank our staff for their efforts in developing a budget that reflects the values, goals, and strategic direction of the District and express our appreciation to the Board of Directors for their leadership and support of sound fiscal management. And most importantly, thank you to our valued customers, for whom it is an honor to serve.

Respectfully submitted,

**Remleh Scherzinger**  
General Manager

**Kelly M . Cadiente**  
Director of Administrative Services

# MCWD BOARD OF DIRECTORS

**Jan Shriner**  
President  
directorshriner@mcwd.org

**Thomas Moore**  
Director  
directormoore@mcwd.org

**Gail Morton**  
Director  
directormorton@mcwd.org

**Herbert Cortez**  
Vice President  
directorcortez@mcwd.org

**Matt Zefferman**  
Director  
mzefferman@mcwd.org

---

## MCWD STAFF

**Remleh Scherzinger**  
General Manager  
rscherzinger@mcwd.org

**Paula Riso**  
Executive Assistant/Clerk to the Board  
priso@mcwd.org

**Kelly Cadiente**  
Director of Administrative Services  
kcadiente@mcwd.org

**Rose Gill**  
HR/Risk Administrator  
rgill@mcwd.org

**Barbara Montanti**  
Customer Service/Billing Supervisor  
bmontanti@mcwd.org

**Derek Cray**  
Operations & Maintenance Manager  
dcray@mcwd.org

**Patrick Breen**  
Water Resources Manager  
pbreen@mcwd.org

# 22/23 MARINA RATES, FEES & CHARGES

<b>Water Consumption Charge</b>	<b>July 1, 2022 (per hcf)</b>	<b>Rates Effective January 1, 2023 (per hcf)</b>
0 - 10 hcf (Tier 1)	3.65	3.80
10+ hcf (Tier 2)	5.57	5.79
<b>Monthly Minimum Water Charges</b>		
<b>Meter Size</b>	<b>Fee (Per Month)</b>	<b>Fee (per month)</b>
5/8" or 3/4"	27.26	28.34
1"	36.77	38.22
1 1/2"	60.52	62.91
2"	89.02	92.55
3"	165.03	171.56
4"	250.55	260.46
6"	488.08	507.39
8"	963.15	1,001.26
<b>Monthly Minimum Sewer Charges</b>		
	<b>per EDU per month</b>	<b>per EDU per month</b>
Monthly Wastewater Charge	17.29	17.98
<b>Temporary Water Service</b>		
Meter Deposit Fee	763.00	794.00
Hydrant Meter Fee (Set/Remove Fee)	166.00 one time fee	173.00 one time fee
Hydrant Meter Fee (Relocate Fee)	166.00 per occurrence	173.00 per occurrence
Minimum Monthly Service Charge	115.10 per month	119.75 per month
Estimated Water Consumption Deposit	1,288.00 minimum	1,340.00 minimum
<b>Private Fire Meter Charge</b>		
<b>Size</b>	<b>Fee per month</b>	<b>Fee per month</b>
1"	1.94	2.02
1 1/2"	5.65	5.87
2"	12.04	12.52
2 1/2"	21.65	22.51
3"	34.97	36.37
4"	74.52	77.50
6"	216.46	225.12
8"	461.28	479.73
<b>Capacity Charges</b>		
	<b>per EDU</b>	
Water	*\$6,425.00	
Recycled Water Only	*\$1,025.00	
Sewer	*\$2,500.00	

\*Per District Ordinance 6.089.090 Section B, each July 1st, Capacity Charges will be adjusted by an increment based on the change in the Engineering News Record 20-City Average Construction Cost Index (CCI) over the prior year, using the index published for the first quarter of the calendar year, and rounding to the nearest \$25. The CCI for 1st Quarter 2022 is 8.87%.

# 22/23 ORD RATES, FEES & CHARGES

Water Consumption Charge	July 1, 2022 (per hcf)	Rates Effective January 1, 2023 (per hcf)
0 - 10 hcf (Tier 1)	4.72	4.90
10+ hcf (Tier 2)	9.19	9.55
Monthly Capital Surcharge*	20.00 per EDU	20.00 per EDU
Flat Rate	186.90 per unit	194.40 per unit
<b>Monthly Minimum Water Charges</b>		
<b>Meter Size</b>	<b>Fee (Per Month)</b>	<b>Fee (per month)</b>
5/8" or 3/4"	47.09	48.94
1"	66.16	68.76
1 1/2"	113.82	118.29
2"	171.02	177.74
3"	323.55	336.26
4"	495.14	514.60
6"	971.80	1,003.98
8"	1,925.11	2,000.75
<b>Monthly Minimum Sewer Charges</b>	<b>per EDU per month</b>	<b>per EDU per month</b>
Monthly Wastewater Charge	37.00	38.15
Monthly Capital Surcharge*	5.00	5.00
<b>Temporary Water Service</b>		
Meter Deposit Fee	806.00	839.00
Hydrant Meter Fee (Set/Remove Fee)	176.00 one time fee	184.00 one time fee
Hydrant Meter Fee (Relocate Fee)	176.00 per occurrence	184.00 per occurrence
Minimum Monthly Service Charge	187.75 per month	195.30 per month
Estimated Water Consumption Deposit	1,364.00 minimum	1,419.00 minimum
<b>Private Fire Meter Charge</b>	<b>Fee per month</b>	<b>Fee per month</b>
1"	2.73	2.90
1 1/2"	8.12	8.45
2"	17.32	18.02
2 1/2"	31.14	32.39
3"	50.31	52.32
4"	107.20	111.49
6"	311.40	323.85
8"	663.61	690.15
<b>Wheeling Charges</b>	2,000.00 per month	2,997.67 per month

\*Connections after June 30, 2005 & before July 5, 2014

## 22/23 ORD RECYCLED WATER RATES, FEES & CHARGES

As the water service provider of the former Ft. Ord ("Ord Community"), MCWD through the Regional Urban Water Augmentation Program ("RUWAP"), developed a recycled water project with Monterey One Water (M1W). As a partner in funding the facilities both parties funded the projects through debt financing. The District and the JPA through Board action, throughout the Recycled Water Project, committed net revenues from all other cost centers of the District fund the remaining revenue required of the recycled water system to fund its debt obligation.

This project not only provides the water supply to meet the ultimate needs of the Ord Community but benefits the existing water customers by:

1. Reducing groundwater pumping of the District's primary water source and thereby slowing seawater intrusion
2. Assists the District in meeting its obligations under the 2014 Sustainable Groundwater Management Act (SGMA) as Groundwater Sustainability Agency.

The following rates for recycled water service, are based on the 2022 Recycled Water Rate Study ("Study") conducted by Raftelis and were designed to collect the full revenue requirement of the recycled water system after all customers have completed their connections to the system. The reason for this is that the District must service the project debt regardless of consumption.

July 1, 2022	
<b>Recycled Water Consumption Charge</b>	6.63 per hcf
<b>Monthly Min. Recycled Water Charges</b>	
<b>Size</b>	<b>Fee (Per Month)</b>
5/8" or 3/4"	50.72
1"	71.92
1 1/2"	124.93
2"	188.53
3"	389.95
4"	686.78
6"	1,394.04
8"	2,987.19
<b>Capacity Charges</b>	<b>Per EDU</b>
Water	*\$13,125.00
Recycled Water Only	*\$5,175.00
Sewer	*\$3,375.00

\*Per District Ordinance 6.089.090 Section B, each July 1st, Capacity Charges will be adjusted by an increment based on the change in the Engineering News Record 20-City Average Construction Cost Index (CCI) over the prior year, using the index published for the first quarter of the calendar year, and rounding to the nearest \$25. The CCI for 1st Quarter 2022 is 8.87%.

# 22/23 BUDGET SUMMARY

REVENUES & OTHER SOURCES	MARINA WATER	MARINA SEWER	ORD WATER	ORD SEWER	RECYCLED WATER	GSA	TOTAL
WATER SALES	4,692,419	-	10,652,534	-	-	-	15,344,952
SEWER SALES	-	1,583,341	-	3,638,763	-	-	5,222,104
RECYCLED WATER SALES	-	-	-	-	1,636,556	-	1,636,556
DEVELOPER FEES	30,000	4,000	200,000	100,000	-	-	334,000
WATER SOURCE FEES	-	-	-	-	-	874,969	874,969
OTHER FEES & CHARGES	166,874	2,000	1,015,295	10,000	-	-	1,194,169
<b>OPERATING REVENUE</b>	<b>4,889,293</b>	<b>1,589,341</b>	<b>11,867,829</b>	<b>3,748,763</b>	<b>1,636,556</b>	<b>874,969</b>	<b>24,606,750</b>
CAP. FEES/CAP. SURCHARGE	356,202	147,500	4,119,788	1,659,900	2,701,810	-	8,985,200
INTEREST	25,000	11,040	70,400	24,135	-	-	130,575
LOAN PROC. - STATE REV. FUND	-	-	-	-	2,809,896	-	2,809,896
2019 COPS PROCEEDS	3,030,198	12,500	2,256,189	3,406,500	-	-	8,705,387
BUILDING REM. BOND FUND PROC.	-	-	485,000	485,000	-	-	970,000
OTHER REVENUES	426,997	47,512	713,195	102,165	31,355	-	1,321,225
<b>NON OPERATING REVENUES</b>	<b>3,838,397</b>	<b>218,552</b>	<b>7,644,572</b>	<b>5,677,700</b>	<b>5,543,061</b>	<b>-</b>	<b>22,922,283</b>
<b>TOTAL REV. &amp; OTHER SOURCES</b>	<b>8,727,690</b>	<b>1,807,893</b>	<b>19,512,401</b>	<b>9,426,463</b>	<b>7,179,617</b>	<b>874,969</b>	<b>47,529,033</b>
<b>EXPENSES AND OTHER USES</b>							
SALARIES & BENEFITS	2,070,781	603,005	4,073,367	1,147,164	143,099	304,969	8,342,385
DEPT. EXPENSE	2,524,112	376,299	5,517,059	785,956	2,594,751	570,000	12,368,177
INTEREST EXPENSE	297,319	132,129	793,437	440,145	412,702	-	2,075,732
FRANCHISE & ADMIN FEES	-	-	133,543	47,159	-	-	180,702
TOTAL C I P/CAPEQUIPMENT	3,659,058	162,300	4,984,959	4,730,070	3,209,896	-	16,746,283
PRINCIPAL DEBT SERVICE	207,608	98,731	689,044	317,604	436,976	-	1,749,963
TRANS. TO CAP REPL. FUND	200,000	100,000	200,000	100,000	-	-	600,000
TRANSFER TO/(FROM) RES., NET	(231,188)	335,430	3,120,993	1,858,365	382,193	-	5,465,793
<b>TOTAL EXPENSES &amp; OTHER USES</b>	<b>8,727,690</b>	<b>1,807,893</b>	<b>19,512,401</b>	<b>9,426,463</b>	<b>7,179,617</b>	<b>874,969</b>	<b>47,529,033</b>
<b>BALANCE</b>	<b>0</b>	<b>0</b>	<b>0</b>	<b>0</b>	<b>0</b>	<b>0</b>	<b>0</b>

# 22/23 BUDGET COMPARISON

	2020-2021 ACTUALS	2021-2022 EST. ACTUALS	2021-2022 ADOPTED	2022-2023 ADOPTED	BUD vs. BUD % CHANGE
<b>REVENUE</b>					
WATER SALES	12,371,108	13,706,811	13,076,840	15,760,481	15.0%
SEWER SALES	4,626,453	6,082,323	4,771,272	5,222,104	-14.1%
RECYCLED WATER SALES	-	-	449,787	1,636,556	-
DEVELOPER FEES	386,135	759,468	334,000	334,000	-56.0%
WATER SOURCE FEES	-	-	-	874,969	-
OTHER FEES & CHARGES	503,344	560,746	639,303	778,641	38.9%
OTHER REVENUES	2,876,422	1,397,113	1,325,292	1,321,225	-5.4%
DONATIONS FROM OTHER AGENCIES	1,911,749	-	-	-	-
2019 COPS PROCEEDS	660,179	6,463,038	10,043,186	8,705,387	34.7%
BUILDING REMOVAL BOND PROCEEDS	-	-	-	970,000	-
CAPACITY FEES/CAPITAL SURCHARGE	1,209,530	3,550,499	4,228,625	8,985,200	153.1%
LOAN PROCEEDS - ST REV FUND	2,461,210	6,168,476	2,947,226	2,809,896	-54.4%
INTEREST	107,313	54,497	130,776	130,575	139.6%
<b>TOTAL REVENUE</b>	<b>27,113,443</b>	<b>38,742,971</b>	<b>37,946,307</b>	<b>47,529,033</b>	<b>25.3%</b>
<b>EXPENSES</b>					
SALARIES & BENEFITS	6,796,948	6,471,819	7,308,498	8,342,385	14.1%
DEPT. EXPENSE	7,010,498	8,061,200	9,057,491	12,368,177	36.6%
INTEREST EXPENSE	2,046,857	2,036,571	2,032,671	2,075,732	2.1%
FRANCHISE & ADMIN FEES	154,012	173,752	162,838	180,702	11.0%
TOTAL C IP/CAPITALIZED EQUIPMENT	5,684,151	13,408,930	19,999,819	16,746,283	-16.3%
PRINCIPAL DEBT SERVICE	1,441,859	1,512,217	1,512,217	1,749,963	15.7%
TRANSFER TO CAP REP. FUND	600,000	600,000	600,000	600,000	100.0%
TRANSFER (FROM)/TO RESERVES, NET	3,379,118	6,478,483	(2,727,226)	5,465,792	-300.4%
<b>TOTAL EXPENSES</b>	<b>27,113,443</b>	<b>38,742,971</b>	<b>37,946,309</b>	<b>47,529,033</b>	<b>25.3%</b>
<b>BALANCE</b>	<b>0</b>	<b>0</b>	<b>0</b>	<b>0</b>	<b>0</b>

# 22/23 REVENUE CATEGORIES

## DISTRICT WIDE

ACCOUNT NAME	2020-2021 ACTUAL	2021-2022 ADOPTED	2021-2022 ESTIMATED	2022-2023 ADOPTED	BUD vs BUD % CHANGE
WATER SALES	12,024,505	12,748,938	12,848,163	15,344,952	20.4%
SEWER SALES	4,626,453	4,771,272	6,082,323	5,222,104	9.4%
RECYCLED WATER SALES	-	449,787	-	1,636,556	263.9%
DEVELOPER FEES	386,135	334,000	759,468	334,000	-
WATER SOURCE FEES	-	-	-	874,969	-
OTHER FEES & CHARGES	849,946	1,005,094	1,419,394	1,231,190	22.5%
<b>OPERATING REVENUES</b>	<b>17,887,040</b>	<b>19,309,091</b>	<b>21,109,348</b>	<b>24,643,771</b>	<b>27.6%</b>
CAP. FEES/CAP. SURCHARGE	1,209,530	4,228,625	3,550,499	8,985,200	112.5%
INTEREST	107,313	138,676	54,497	135,275	-2.5%
DONATIONS FR. OTHER AGENCIES	1,911,749	-	-	-	-
LOAN PROC. - STATE REV. FUND	2,461,210	2,947,226	6,168,476	2,809,896	-4.7%
2019 COPS PROCEEDS	660,179	6,373,988	6,463,038	8,705,387	36.6%
BUILDING REM. BOND PROC.	-	-	-	970,000	-
OTHER REVENUES	2,876,422	1,279,505	1,397,113	1,279,504	0.0%
<b>NON OPERATING REVENUES</b>	<b>9,226,403</b>	<b>14,968,020</b>	<b>17,633,623</b>	<b>22,885,262</b>	<b>52.9%</b>
<b>TOTAL REV. &amp; OTHER SOURCES</b>	<b>27,113,443</b>	<b>34,277,111</b>	<b>38,742,971</b>	<b>47,529,033</b>	<b>38.7%</b>

### REVENUE AND OTHER SOURCES CATEGORIES

#### Operating Revenues

- Water Sales: include single and multi-family residential, business, government, and hydrant water charges
- Sewer Sales: include residential and non-residential wastewater collection charges
- Recycled Water Sales: include recycled water sales through rates and agreements
- Developer Fees: Reimbursement fees for developer costs
- Water Source Fees: Fees collected by the MCWD GSA for its work and projects
- Other Fees & Charges: include fire system charges, backflow fees, late fees, plan-check, and permit fees

#### Non-operating Revenue & Other Sources

- Capacity Fees/Capital Surcharges
- Interest
- Other Revenues: include deferred revenue, rental income, grant revenue, donations from other agencies
- Donations From Other Agencies: Includes infrastructure conveyance from Developers
- Loan Proceeds - SRF: agreement proceeds from the State Revolving Fund Loan for the RUWAP Distribution Project
- 2019 COPS Proceeds
- Building Removal Proceeds: FORA bond proceeds given to MCWD for building removal
- Other Revenues: include deferred revenue, rental income, and grant revenue

# 22/23 REVENUE CATEGORIES

## MARINA WATER

ACCOUNT NAME	2020-2021 ACTUAL	2021-2022 ADOPTED	2021-2022 ESTIMATED	2022-2023 ADOPTED	BUD vs BUD % CHANGE
WATER SALES	4,080,127	14,597,936	4,394,999	4,692,419	2.1%
SEWER SALES	-	-	-	-	-
RECYCLED WATER SALES	-	-	-	-	-
DEVELOPER FEES	34,774	30,000	318,677	30,000	0.0%
WATER SOURCE FEES	-	-	-	-	-
OTHER FEES & CHARGES	132,690	162,015	150,354	179,914	11.0%
<b>OPERATING REVENUES</b>	<b>4,247,590</b>	<b>4,789,951</b>	<b>4,864,030</b>	<b>4,902,333</b>	<b>2.3%</b>
CAP. FEES/CAP. SURCHARGE	104,288	489,700	247,991	424,050	-13.4%
INTEREST	20,996	28,201	9,002	25,000	-11.4%
DONATIONS FR. OTHER AGENCIES	-	-	-	-	-
LOAN PROC. - STATE REV. FUND	-	-	-	-	-
2019 COPS PROCEEDS	147,531	2,540,807	1,056,427	3,030,198	19.3%
BUILDING REM. BOND PROC.	-	-	-	-	-
OTHER REVENUES	477,864	413,957	492,596	413,957	0.0%
<b>NON OPERATING REVENUES</b>	<b>750,678</b>	<b>3,472,665</b>	<b>1,806,016</b>	<b>3,893,205</b>	<b>12.1%</b>
<b>TOTAL REV. &amp; OTHER SOURCES</b>	<b>4,998,269</b>	<b>8,262,616</b>	<b>6,670,047</b>	<b>8,795,538</b>	<b>6.4%</b>

# 22/23 REVENUE CATEGORIES

## MARINA SEWER

ACCOUNT NAME	2020-2021 ACTUAL	2021-2022 ADOPTED	2021-2022 ESTIMATED	2022-2023 ADOPTED	BUD vs BUD % CHANGE
WATER SALES	-	-	-	-	-
SEWER SALES	1,439,168	1,493,834	1,520,273	1,583,341	6.0%
RECYCLED WATER SALES	-	-	-	-	-
DEVELOPER FEES	5,234	4,000	3,872	4,000	0.0%
WATER SOURCE FEES	-	-	-	-	-
OTHER FEES & CHARGES	11,464	5,759	6,084	6,019	4.5%
<b>OPERATING REVENUES</b>	<b>1,455,866</b>	<b>1,503,593</b>	<b>1,530,229</b>	<b>1,593,360</b>	<b>6.0%</b>
CAP. FEES/CAP. SURCHARGE	49,536	197,925	84,394	147,500	-25.5%
INTEREST	4,863	12,240	10,049	12,240	0.0%
DONATIONS FR. OTHER AGENCIES	-	-	-	-	-
LOAN PROC. - STATE REV. FUND	-	-	-	-	-
2019 COPS PROCEEDS	65,237	31,500	-	12,500	-60.3%
BUILDING REM. BOND PROC.	-	-	-	-	-
OTHER REVENUES	43,198	42,294	39,842	42,293	0.0%
<b>NON OPERATING REVENUES</b>	<b>162,835</b>	<b>283,959</b>	<b>134,285</b>	<b>214,533</b>	<b>-24.4%</b>
<b>TOTAL REV. &amp; OTHER SOURCES</b>	<b>1,618,701</b>	<b>1,787,552</b>	<b>1,664,514</b>	<b>1,807,893</b>	<b>1.1%</b>

# 22/23 REVENUE CATEGORIES

## ORD WATER

ACCOUNT NAME	2020-2021 ACTUAL	2021-2022 ADOPTED	2021-2022 ESTIMATED	2022-2023 ADOPTED	BUD vs BUD % CHANGE
WATER SALES	7,944,379	8,151,002	8,453,164	10,652,534	30.7%
SEWER SALES	-	-	-	-	-
RECYCLED WATER SALES	-	-	-	-	-
DEVELOPER FEES	170,196	200,000	233,624	200,000	0.0%
WATER SOURCE FEES	-	-	-	-	-
OTHER FEES & CHARGES	701,748	822,391	1,250,784	1,030,315	25.3%
<b>OPERATING REVENUES</b>	<b>8,816,322</b>	<b>9,173,393</b>	<b>9,937,571</b>	<b>11,882,848</b>	<b>29.5%</b>
CAP. FEES/CAP. SURCHARGE	728,867	2,816,000	2,844,096	6,753,750	139.8%
INTEREST	58,364	73,900	25,652	73,900	0.0%
DONATIONS FR. OTHER AGENCIES	919,532	-	-	-	-
LOAN PROC. - STATE REV. FUND	-	-	-	-	-
2019 COPS PROCEEDS	156,906	1,691,800	1,918,630	2,256,189	33.4%
BUILDING REM. BOND PROC.	-	-	-	485,000	-
OTHER REVENUES	748,944	694,676	731,060	694,676	0.0%
<b>NON OPERATING REVENUES</b>	<b>2,612,614</b>	<b>5,276,376</b>	<b>5,519,438</b>	<b>10,263,515</b>	<b>94.5%</b>
<b>TOTAL REV. &amp; OTHER SOURCES</b>	<b>11,428,935</b>	<b>14,449,769</b>	<b>15,457,010</b>	<b>22,146,363</b>	<b>53.3%</b>

# 22/23 REVENUE CATEGORIES

## ORD SEWER

ACCOUNT NAME	2020-2021 ACTUAL	2021-2022 ADOPTED	2021-2022 ESTIMATED	2022-2023 ADOPTED	BUD vs BUD % CHANGE
WATER SALES	-	-	-	-	-
SEWER SALES	3,187,285	3,277,438	4,562,050	3,638,763	11.0%
RECYCLED WATER SALES	-	-	-	-	-
DEVELOPER FEES	175,932	100,000	200,403	100,000	0.0%
WATER SOURCE FEES	-	-	-	-	-
OTHER FEES & CHARGES	4,045	14,929	12,172	14,942	0.1%
<b>OPERATING REVENUES</b>	<b>3,367,262</b>	<b>3,392,367</b>	<b>4,774,625</b>	<b>3,753,705</b>	<b>10.7%</b>
CAP. FEES/CAP. SURCHARGE	326,838	725,000	374,018	1,659,900	129.0%
INTEREST	23,086	24,135	9,793	24,135	0.0%
DONATIONS FR. OTHER AGENCIES	852,773	-	-	-	-
LOAN PROC. - STATE REV. FUND	-	-	-	-	-
2019 COPS PROCEEDS	290,505	2,109,881	3,487,981	3,406,500	61.5%
BUILDING REM. BOND PROC.	-	-	-	485,000	-
OTHER REVENUES	108,228	97,223	102,259	97,223	0.0%
<b>NON OPERATING REVENUES</b>	<b>1,601,431</b>	<b>2,956,239</b>	<b>3,974,051</b>	<b>5,672,758</b>	<b>91.9%</b>
<b>TOTAL REV. &amp; OTHER SOURCES</b>	<b>4,968,692</b>	<b>6,348,606</b>	<b>8,748,677</b>	<b>9,426,463</b>	<b>48.5%</b>

# 22/23 REVENUE CATEGORIES

## RECYCLED WATER

ACCOUNT NAME	2020-2021 ACTUAL	2021-2022 ADOPTED	2021-2022 ESTIMATED	2022-2023 ADOPTED	BUD vs BUD % CHANGE
WATER SALES	-	-	-	-	-
SEWER SALES	-	-	-	-	-
RECYCLED WATER SALES	-	449,787	-	1,636,556	263.9%
DEVELOPER FEES	-	-	2,892	-	-
WATER SOURCE FEES	-	-	-	-	-
OTHER FEES & CHARGES	-	-	-	-	-
<b>OPERATING REVENUES</b>	<b>-</b>	<b>449,787</b>	<b>2,892</b>	<b>1,636,556</b>	<b>263.9%</b>
CAP. FEES/CAP. SURCHARGE	-	-	-	-	-
INTEREST	4	200	1	-	-100.0%
DONATIONS FR. OTHER AGENCIES	139,444	-	-	-	-
LOAN PROC. - STATE REV. FUND	2,461,210	2,947,226	6,168,476	2,809,896	-4.7%
2019 COPS PROCEEDS	-	-	-	-	-
BUILDING REM. BOND PROC.	-	-	-	-	-
OTHER REVENUES	1,498,188	31,355	31,355	31,355	0.0%
<b>NON OPERATING REVENUES</b>	<b>4,098,846</b>	<b>2,978,781</b>	<b>6,199,832</b>	<b>2,841,251</b>	<b>-4.6%</b>
<b>TOTAL REV. &amp; OTHER SOURCES</b>	<b>4,098,846</b>	<b>3,428,568</b>	<b>6,202,724</b>	<b>4,477,807</b>	<b>30.6%</b>

# 22/23 REVENUE CATEGORIES

## GROUND SUSTAINABILITY AGENCY

ACCOUNT NAME	2020-2021 ACTUAL	2021-2022 ADOPTED	2021-2022 ESTIMATED	2022-2023 ADOPTED	BUD vs BUD % CHANGE
WATER SALES	-	-	-	-	-
SEWER SALES	-	-	-	-	-
RECYCLED WATER SALES	-	-	-	-	-
DEVELOPER FEES	-	-	-	-	-
WATER SOURCE FEES	-	-	-	874,969	-
OTHER FEES & CHARGES	-	-	-	-	-
<b>OPERATING REVENUES</b>	-	-	-	<b>874,969</b>	-
CAP. FEES/CAP. SURCHARGE	-	-	-	-	-
INTEREST	-	-	-	-	-
DONATIONS FR. OTHER AGENCIES	-	-	-	-	-
LOAN PROC. - STATE REV. FUND	-	-	-	-	-
2019 COPS PROCEEDS	-	-	-	-	-
BUILDING REM. BOND PROC.	-	-	-	-	-
OTHER REVENUES	-	-	-	-	-
<b>NON OPERATING REVENUES</b>	-	-	-	-	-
<b>TOTAL REV. &amp; OTHER SOURCES</b>	-	-	-	<b>874,969</b>	-

# 22/23 EXPENSE BUDGET DISTRICT WIDE

	2020-2021 ACTUALS	2021-2022 EST. ACTUALS	2021-2022 ADOPTED	2022-2023 ADOPTED	BUD vs. BUD % CHANGE
<b>EXPENSES</b>					
SALARIES & BENEFITS	6,796,948	6,274,549	7,308,498	8,342,385	14.1%
DEPT. EXPENSE	7,010,498	7,088,646	9,057,491	12,368,177	36.6%
INTEREST EXPENSE	2,046,857	2,036,571	2,032,671	2,075,732	2.1%
FRANCHISE & ADMIN FEES	154,012	173,752	162,838	180,702	11.0%
TOTAL C IP/CAPITALIZED EQUIPMENT	3,772,402	13,408,930	19,999,819	16,746,283	-16.3%
PRINCIPAL DEBT SERVICE	1,441,859	1,512,217	1,512,217	1,749,963	15.7%
TRANS. TO CAP REPLACEMENT FUND	600,000	600,000	600,000	600,000	100.0%
TRANS. (FROM)/TO RESERVES, NET	3,391,034	7,539,022	(2,727,226)	5,465,792	-300.4%
<b>TOTAL EXPENSES</b>	<b>25,213,610</b>	<b>38,633,686</b>	<b>37,946,309</b>	<b>47,529,033</b>	<b>25.3%</b>

## EXPENSE AND OTHER USES CATEGORIES

### Operating Expenses:

- Salaries & Benefits: include wages and all employee benefits such as health, pension, workers compensation, disability, and life insurance
- Administrative Expenses: includes property and liability insurance premiums, staff development, training, travel, bank fees, Board costs, interest expense, IOP Association Fees, and Franchise Fees.
- Operating Supplies, Maintenance & Repair: include meters and registers, and all system and facilities maintenance
- Information Systems: include software licenses/subscriptions and support and maintenance agreements, computer equipment, and supplies under the capitalization threshold.
- Professional Services: include Accounting and Consulting Services and Legal Fees
- Utilities Expense: includes Phone Service, Power & Gas, and Disposal Services
- Office Expenses: Building Security, Postage, Printing, Office, and General Supplies.
- Water Source Fees: Fees paid by Marina Water and Ord Water to the MCWD GSA
- M1W Payments: include payments to M1W for District's share of PWM debt service and O&M Costs

### Non-operating Expenses and Other Uses:

- Total CIP/Capitalized Equipment: includes capital improvement projects and capital equipment purchases
- Principal Debt Service
- Transfer to Cap. Replacement Fund: District practice to fund a fixed amount to the Capital Replacement fund
- Transfer To/(From) Reserves, Net: Represents all other transfers to and from the District's various reserve funds. See page 60.

# ADMINISTRATION

The Administration department includes the overall management functions of the District and support to the Board.

Customer Service is the “face” of the District as they are the first to assist customers and address their needs. They are responsible for reading and installing meters, and the District’s accounts receivable function which includes the monthly billing to customers and processing their payments.

The Finance department is responsible for compiling the annual budget, the accounts payable function (paying the bills), processing

payroll, managing cash flow, and all financial reporting of the District. They ensure that all fiscal policies and procedures of the District comply with General Accepted Accounting Principles (GAAP).

The HR department oversees all responsibilities for providing administrative and operational human resources support to District employees, retirees, directors, and all eligible dependents through HR services, benefits administration, and safety mitigation. Duties include managing the District’s workforce and employee development, conflict resolution, recruitment, training,

*MCWD’s Customer Service/Billing department.*



and negotiating MOUs with District bargaining units.

The IT department administers and provides technical support to staff on the various applications of the District to ensure that the applications are fully utilized and integrated

where possible. IT monitors the security of the District's IT systems to prevent cyber breaches and manages the District's IT equipment including repair, replacement, and maintenance contracts.

## **Strategic Plan**

Our objective is to create, maintain, update and implement policies and procedures to ensure sound management of the District. We will manage public funds to assure financial stability and use appropriate technology to maintain efficiency and redundancy. We will also recruit and retain highly qualified and diverse workforce to continue to provide outstanding customer service. The following is a summary of the 5-Year strategic goals for this strategic element:

### **Customer Service**

- Will continue to provide excellent customer service through reviewing and updating customer database as needed

- Budget includes resources for:

  - Meter and register change-outs with AMI meters and registers

  - District has applied for a grant that would help fund the eventual conversion from AMR meters to AMI meters.

- In-house meter testing

### **Finance**

- Finance will continue with its ongoing efforts to:

  - Close and audit financial statements in a timely manner

  - Obtain the Certificate of Achievement in Financial Reporting from GFOA for the 15th consecutive year

- Resources in the FY 2022-2023 Proposed Budget include:

  - Five-year Financial Plan and Rate Study which will assist in reserves management

### **Human Resources**

- Human Resource's ongoing:

  - Recruiting efforts

  - Revisions and updates to the Employee Handbook

- Resources in the FY 2022-2023 Proposed Budget include:

  - Classification and Compensation Study in compliance with the District's MOUs with employee groups

### **Information Technology**

- IT will continue with its ongoing efforts to:

  - Reviewing and updating District policies and procedures as they relate to cybersecurity

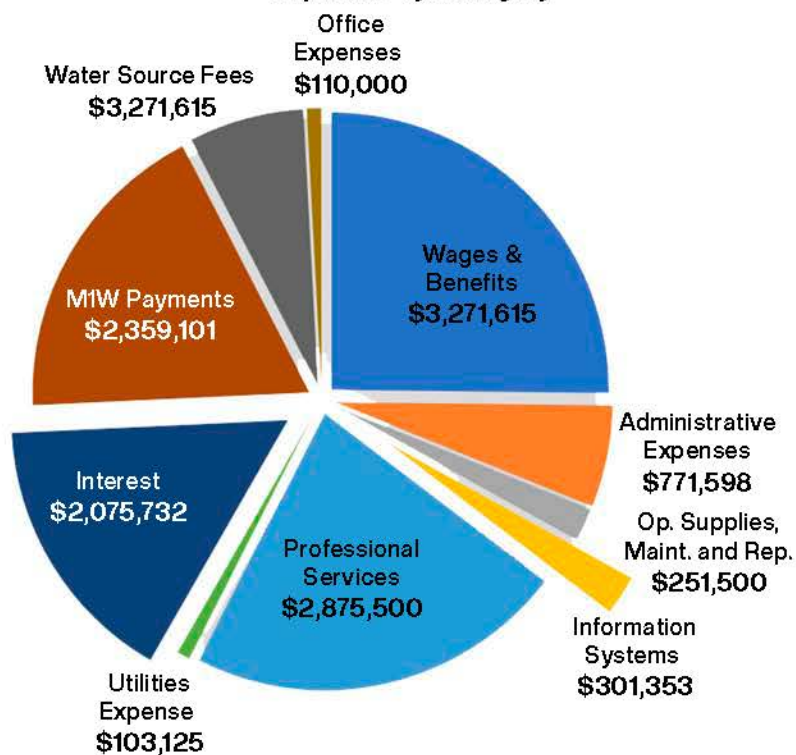
  - Continuous acquisition and staff training of available technology

- Resources in the FY 2022-2023 Proposed Budget include:

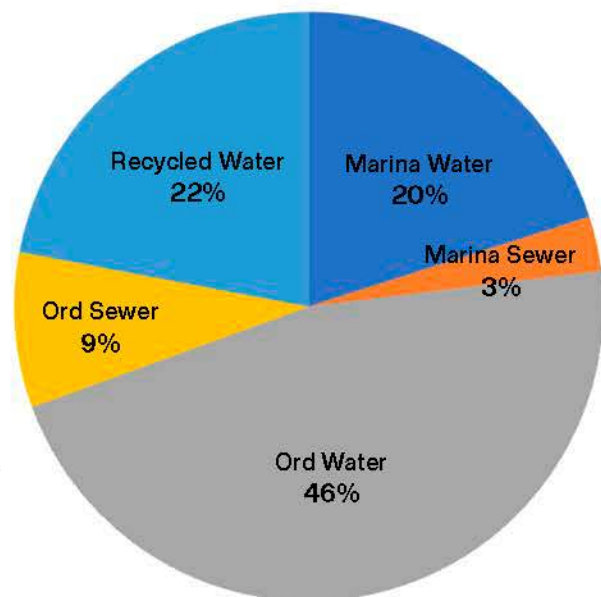
  - System vulnerability testing

	2020-2021	2021-2022	2021-2022	2022-2023	BUD vs BUD
Administration	ACTUAL	ADOPTED	ESTIMATED	ADOPTED	% CHANGE
Wages and Benefits	3,012,476	2,883,737	2,922,520	3,271,615	13.5%
Administrative Expense	604,881	695,488	716,002	771,598	10.9%
Op. Supplies, Maint. and Repair	261,811	284,700	277,018	251,200	-11.8%
Information Systems	140,408	170,863	102,360	301,353	76.4%
Professional Services	2,655,250	3,061,500	2,525,308	2,875,500	-6.1%
Utilities Expense	90,311	92,000	93,669	103,125	12.1%
Interest	2,046,857	2,032,671	2,036,571	2,075,732	2.1%
MIW Payments	-	837,053	632,908	2,359,101	181.8%
Water Source Fees	-	-	-	874,969	-
Office Expenses	97,374	107,000	98,147	110,000	2.8%
<b>Total - Admin Exp</b>	<b>8,909,367</b>	<b>10,165,012</b>	<b>9,404,503</b>	<b>12,994,192</b>	<b>27.8%</b>

**Expenses by Category**



**Expenses by Cost Center**



# ADMINISTRATION EXPENSES BY COST CENTER

## Marina Water

Account Name	2020-2021 ACTUAL	2021-2022 ADOPTED	2021-2022 ESTIMATED	2022-2023 ADOPTED	BUD vs BUD % CHANGE
Wages and Benefits	755,796	692,115	715,025	850,640	22.9%
Administrative Expense	113,536	125,060	129,638	150,766	20.6%
Op. Supplies, Maint. and Repair	50,315	80,420	57,910	75,280	-6.4%
Information Systems	33,616	40,671	23,930	78,175	92.2%
Professional Services	676,376	856,880	656,991	750,280	-12.4%
Utilities Expense	21,845	22,080	22,509	26,813	21.4%
Interest	313,217	309,026	309,122	297,319	-3.8%
MIW Payments	-	-	-	-	-
Water Source Fees	-	-	-	349,988	-
Office Expenses	24,076	25,680	24,109	28,600	11.4%
<b>Total Expense</b>	<b>1,988,777</b>	<b>2,151,932</b>	<b>1,939,233</b>	<b>2,607,860</b>	<b>21.2%</b>

## Marina Sewer

Account Name	2020-2021 ACTUAL	2021-2022 ADOPTED	2021-2022 ESTIMATED	2022-2023 ADOPTED	BUD vs BUD % CHANGE
Wages and Benefits	169,571	144,167	141,603	163,561	13.5%
Administrative Expense	24,168	26,460	27,825	29,304	10.7%
Op. Supplies, Maint. and Repair	6,564	6,425	5,163	5,650	-12.1%
Information Systems	8,899	10,374	5,755	15,230	46.8%
Professional Services	17,353	16,350	14,298	33,400	104.3%
Utilities Expense	5,354	4,600	4,709	5,156	12.1%
Interest	139,232	137,324	137,344	132,129	-3.8%
MIW Payments	-	-	-	-	-
Water Source Fees	-	-	-	-	-
Office Expenses	16,280	5,350	10,761	5,500	2.8%
<b>Total Expense</b>	<b>387,421</b>	<b>351,050</b>	<b>347,457</b>	<b>389,930</b>	<b>11.1%</b>

# ADMINISTRATION EXPENSES BY COST CENTER

## Ord Water

Account Name	2020-2021 ACTUAL	2021-2022 ADOPTED	2021-2022 ESTIMATED	2022-2023 ADOPTED	BUD vs BUD % CHANGE
Wages and Benefits	1,690,776	1,672,620	1,697,739	1,864,868	11.5%
Administrative Expense	360,932	417,903	436,892	461,949	10.5%
Op. Supplies, Maint. and Repair	192,183	186,550	203,999	160,810	-13.8%
Information Systems	77,001	95,299	57,887	171,425	79.9%
Professional Services	1,873,658	2,137,460	1,738,283	1,929,460	-9.7%
Utilities Expense	50,590	53,360	54,229	58,781	10.2%
Interest	826,702	818,565	818,797	793,437	-3.1%
MIW Payments	-	-	-	-	-
Water Source Fees	-	-	-	524,981	-
Office Expenses	37,816	62,060	47,421	62,700	10%
<b>Total Expense</b>	<b>5,109,658</b>	<b>5,443,817</b>	<b>5,055,246</b>	<b>6,028,412</b>	<b>10.7%</b>

## Ord Sewer

Account Name	2020-2021 ACTUAL	2021-2022 ADOPTED	2021-2022 ESTIMATED	2022-2023 ADOPTED	BUD vs BUD % CHANGE
Wages and Benefits	396,332	374,835	368,153	392,546	4.7%
Administrative Expense	99,015	108,765	115,272	117,779	8.3%
Op. Supplies, Maint. and Repair	12,749	11,305	9,947	9,460	-16.3%
Information Systems	20,892	24,519	14,788	36,523	49.0%
Professional Services	51,134	50,810	47,930	84,360	66.0%
Utilities Expense	12,521	11,960	12,223	12,375	3.5%
Interest	454,952	450,358	450,410	440,145	-2.3%
MIW Payments	-	-	-	-	-
Water Source Fees	-	-	-	-	-
Office Expenses	19,203	13,910	15,857	13,200	-5.1%
<b>Total Expense</b>	<b>1,066,800</b>	<b>1,046,462</b>	<b>1,034,581</b>	<b>1,106,388</b>	<b>5.7%</b>

# ADMINISTRATION EXPENSES BY COST CENTER

## Recycled Water

Account Name	2020-2021 ACTUAL	2021-2022 ADOPTED	2021-2022 ESTIMATED	2022-2023 ADOPTED	BUD vs BUD % CHANGE
Wages and Benefits	-	-	-	-	-
Administrative Expense	7,230	17,300	6,375	11,800	-32%
Op. Supplies, Maint. and Repair	-	-	-	-	-
Information Systems	-	-	-	-	-
Professional Services	36,729	-	67,805	78,000	-
Utilities Expense	-	-	-	-	-
Interest	312,753	317,398	320,898	412,702	30%
MIW Payments	-	837,053	632,908	2,359,101	182%
Water Source Fees	-	-	-	-	-
Office Expenses	-	-	-	-	-
<b>Total Expense</b>	<b>356,711</b>	<b>1,171,751</b>	<b>1,027,986</b>	<b>2,861,603</b>	<b>144%</b>

# OPERATIONS & MAINTENANCE

The Operations and Maintenance department is responsible for operating and maintaining the District's water, wastewater, and recycle water systems and maintaining the District's fleet and buildings. The Department is staffed with 19 full-time employees (FTE) positions, which handles all aspects of the District's conveyance systems. The Department performs installation, repair, or replacement of water, sewer, or recycle mains and service lines and operates and maintains 20 sewer lift stations, 7 water

wells, 9 water storage reservoirs, over 40 pressure reducing valves, and 6 water booster pump stations. The Department is also responsible for all regulatory compliance and reporting for the State Waterboards Division of Drinking Water, Central Coast Waterboards, State and Regional Airboards, Monterey County Environmental Health, and the Department of Transportation. The O & M department has standby personnel ready to respond to any situation 24 hours a day, seven days a week.

*MCWD System operator performing checks and maintenance on both water and sewer infrastructures.*



## Strategic Plan

Improvements and expansions plans for existing water (potable water and recycle water) delivery and wastewater collections systems.

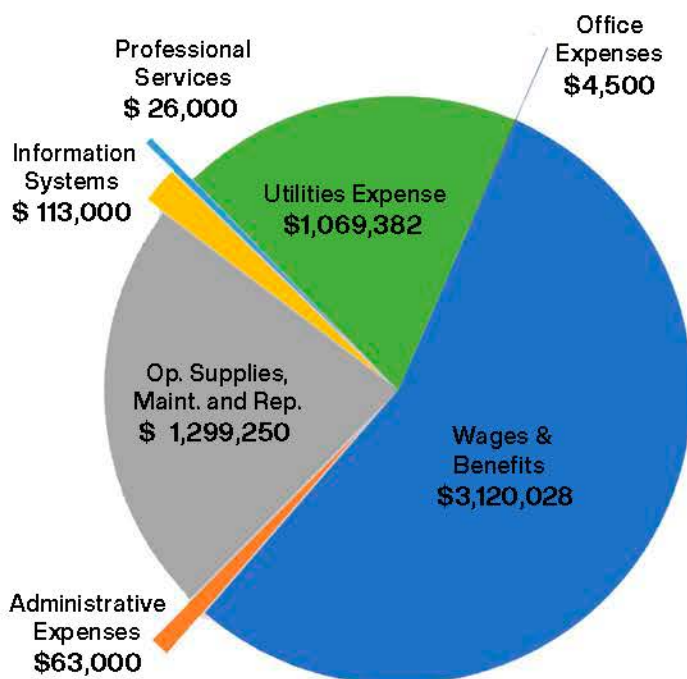
Several projects for Operations and Maintenance are planned for FY 2022-2023:

- Replacement of standby generator at D Booster site
- Installation of portable plug receptacle and MTS at Gigling, Schoonover, and Wittenmyer Lift Station

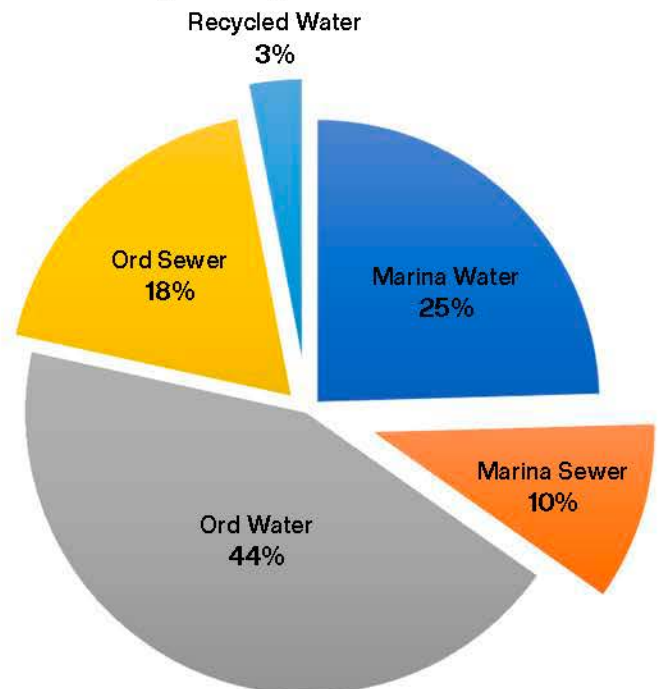
- Rehab of Hatten Lift station-complete new wetwell, pumps and integrating it into SCADA (last site not on SCADA).
- Replacement of motors at wells 29 and 11
- Replacement of Motor Control Centers at Wittenmyer and Hodges sewer lift station
- Large valve replacement/installation project at CSUMB to reduce impacted areas when shutdowns/emergencies happen  
18 valves in total

	2020-2021	2021-2022	2021-2022	2022-2023	BUD vs BUD
Operations & Maintenance	ACTUAL	ADOPTED	ESTIMATED	ADOPTED	% CHANGE
Wages and Benefits	2,412,629	2,817,188	2,472,712	3,120,028	10.7%
Administrative Expense	42,415	59,850	53,636	63,000	5.3%
Op. Supplies, Maint. and Rep.	651,634	914,493	743,015	1,299,250	42.1%
Information Systems	55,476	74,750	126,350	113,000	512%
Professional Services	9,191	17,250	6,485	26,000	50.7%
Utilities Expense	911,416	1,015,883	986,443	1,069,382	5.3%
Office Expenses	396	2,300	414	4,500	95.7%
<b>Total - O&amp;M Exp</b>	<b>4,083,156</b>	<b>4,901,714</b>	<b>4,389,056</b>	<b>5,695,160</b>	<b>16.2%</b>

Expenses by Category



Expenses by Cost Center



# OPERATION & MAINTENANCE EXPENSES BY COST CENTER

## Marina Water

Account Name	2020-2021 ACTUAL	2021-2022 ADOPTED	2021-2022 ESTIMATED	2022-2023 ADOPTED	BUD vs BUD % CHANGE
Wages and Benefits	598,712	676,124	648,409	744,232	10.1%
Administrative Expense	7,107	8,780	8,401	9,180	4.6%
Op. Supplies, Maint. and Rep.	156,166	215,200	167,767	322,700	50.0%
Information Systems	13,526	17,280	31,917	25,680	48.6%
Professional Services	2,779	5,000	2,102	5,500	10.0%
Utilities Expense	247,320	295,418	254,142	289,663	-1.9%
Office Expenses	95	288	99	840	191.7%
<b>Total Expense</b>	<b>1,025,705</b>	<b>1,218,090</b>	<b>1,112,837</b>	<b>1,397,795</b>	<b>14.8%</b>

## Marina Sewer

Account Name	2020-2021 ACTUAL	2021-2022 ADOPTED	2021-2022 ESTIMATED	2022-2023 ADOPTED	BUD vs BUD % CHANGE
Wages and Benefits	329,487	450,751	374,715	387,001	-14.1%
Administrative Expense	3,952	5,400	6,258	6,800	25.9%
Op. Supplies, Maint. and Rep.	32,834	61,875	38,360	163,000	163.4%
Information Systems	2,535	3,600	3,534	5,350	48.6%
Professional Services	-	2,000	1,021	3,000	50.0%
Utilities Expense	15,929	16,700	16,097	17,459	4.5%
Office Expenses	24	60	24	175	191.7%
<b>Total Expense</b>	<b>384,761</b>	<b>540,386</b>	<b>440,010</b>	<b>582,784</b>	<b>7.8%</b>

# OPERATION & MAINTENANCE EXPENSES BY COST CENTER

## Ord Water

Account Name	2020-2021 ACTUAL	2021-2022 ADOPTED	2021-2022 ESTIMATED	2022-2023 ADOPTED	BUD vs BUD % CHANGE
Wages and Benefits	978,329	1,074,464	1,012,567	1,220,541	13.6%
Administrative Expense	15,241	19,560	21,455	24,160	23.5%
Op. Supplies, Maint. and Rep.	315,791	422,150	377,535	495,900	17.5%
Information Systems	33,278	41,760	79,164	62,060	48.6%
Professional Services	6,205	5,000	2,557	10,000	100.0%
Utilities Expense	572,739	624,000	636,292	674,027	8.0%
Office Expenses	222	696	233	2,030	191.7%
<b>Total Expense</b>	<b>1,921,806</b>	<b>2,187,630</b>	<b>2,129,803</b>	<b>2,488,718</b>	<b>13.8%</b>

## Ord Sewer

Account Name	2020-2021 ACTUAL	2021-2022 ADOPTED	2021-2022 ESTIMATED	2022-2023 ADOPTED	BUD vs BUD % CHANGE
Wages and Benefits	506,100	507,095	437,021	625,155	23.3%
Administrative Expense	16,114	20,260	17,322	19,760	-2.5%
Op. Supplies, Maint. and Rep.	146,844	187,275	154,587	299,900	60.1%
Information Systems	6,137	9,360	8,985	13,910	48.6%
Professional Services	207	2,500	805	4,500	80.0%
Utilities Expense	75,427	79,765	79,912	88,233	10.6%
Office Expenses	55	156	57	455	191.7%
<b>Total Expense</b>	<b>750,885</b>	<b>806,411</b>	<b>698,689</b>	<b>1,051,913</b>	<b>30.4%</b>

# OPERATION & MAINTENANCE EXPENSES BY COST CENTER

## Recycled Water

Account Name	2020-2021 ACTUAL	2021-2022 ADOPTED	2021-2022 ESTIMATED	2022-2023 ADOPTED	BUD vs BUD % CHANGE
Wages and Benefits	-	108,754	-	143,099	316%
Administrative Expense	-	5,850	200	3,100	-47.0%
Op. Supplies, Maint. and Rep.	-	27,993	4,767	17,750	-36.6%
Information Systems	-	2,750	2,750	6,000	118.2%
Professional Services	-	2,750	-	3,000	9.1%
Utilities Expense	-	-	-	-	-
Office Expenses	-	1,100	-	1,000	-9.1%
<b>Total Expense</b>	<b>-</b>	<b>149,197</b>	<b>7,717</b>	<b>173,949</b>	<b>16.6%</b>

# LABORATORY

## Strategic Plan

Our objective is to provide high-quality water (potable and recycle water) and efficiently operate wastewater collection system to serve existing and future customers.

Laboratory analysis for upcoming FY-2022-2023:

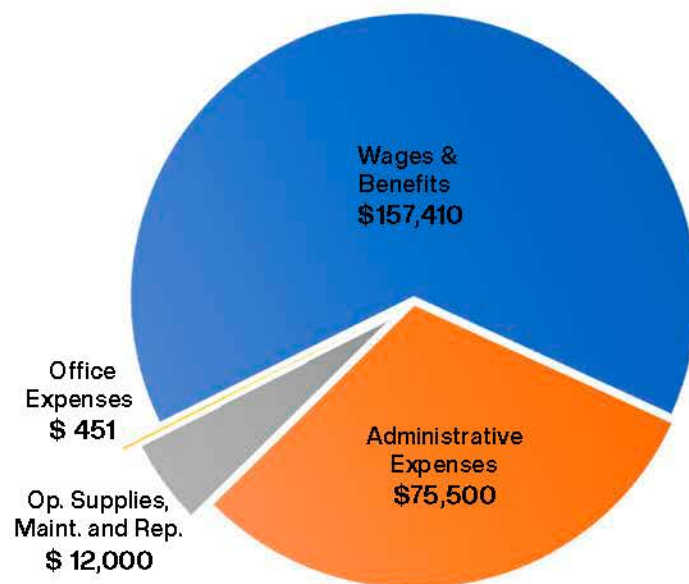
- District will perform 520 distribution bacteriological samples
- 28 raw well source bacteriological samples
- General/Physical sampling at the District's wells and storage reservoirs
- PFAS sampling on well 29 to monitor for PFHxA, and voluntary sampling at all other wells.
- VOC sampling to monitor for TCE, CT, Vinyl Chloride and other constituents.
- Two consecutive quarters of SOC sampling
- Radiological sampling
- Lead and Copper Sampling

*MCWD Team member collecting water samples.*

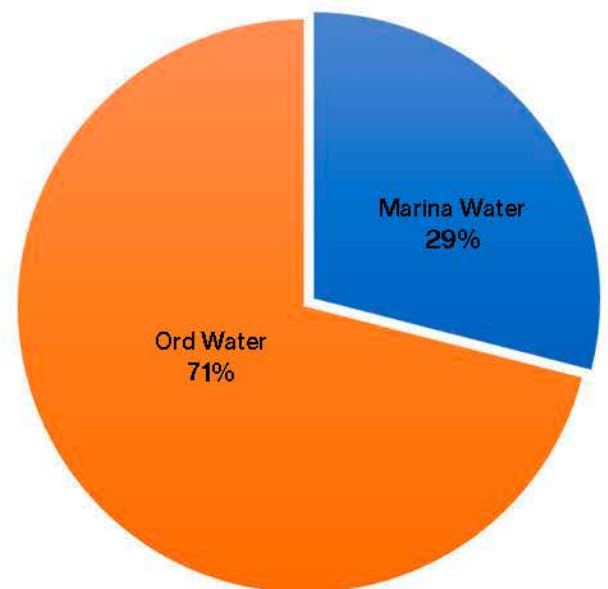


Laboratory	2020-2021 ACTUAL	2021-2022 ADOPTED	2021-2022 ESTIMATED	2022-2023 ADOPTED	BUD vs BUD % CHANGE
Wages and Benefits	22,792	141,994	24,594	157,410	10.9%
Administrative Expense	53,248	74,000	66,364	75,500	2.0%
Op. Supplies, Maint. and Rep.	10,977	9,500	9,800	12,000	26.3%
Office Expenses	276	-	199	451	-
<b>Total - Laboratory Exp</b>	<b>87,294</b>	<b>225,494</b>	<b>100,957</b>	<b>245,361</b>	<b>8.8%</b>

Expenses by Category



Expenses by Cost Center



# LABORATORY EXPENSES BY COST CENTER

## Marina Water

Account Name	2020-2021 ACTUAL	2021-2022 ADOPTED	2021-2022 ESTIMATED	2022-2023 ADOPTED	BUD vs BUD % CHANGE
Wages and Benefits	6,837	41,179	7,232	45,650	10.9%
Administrative Expense	17,016	21,460	20,662	21,895	2.0%
Op. Supplies, Maint. and Rep.	2,888	2,755	2,842	3,480	26.3%
Office Expenses	80	-	58	131	-
<b>Total Expense</b>	<b>26,821</b>	<b>65,394</b>	<b>30,794</b>	<b>71,156</b>	<b>8.8%</b>

## Ord Water

Account Name	2020-2021 ACTUAL	2021-2022 ADOPTED	2021-2022 ESTIMATED	2022-2023 ADOPTED	BUD vs BUD % CHANGE
Wages and Benefits	15,955	100,815	17,361	111,760	10.9%
Administrative Expense	36,233	52,540	45,702	53,605	2.0%
Op. Supplies, Maint. and Rep.	8,089	6,745	6,958	8,520	26.3%
Office Expenses	196	-	141	320	-
<b>Total Expense</b>	<b>60,473</b>	<b>160,100</b>	<b>70,163</b>	<b>174,205</b>	<b>8.8%</b>

# CONSERVATION

Conservation offers free visits to homes and businesses to help customers use water more efficiently and to lower monthly water bills. They offer water efficiency tips, look for leaks, install water saving devices, and provide irrigation advice.

MCWD has free water-saving devices for all district customers. Available are 1.5 gallon per minute water-efficient showerheads, low-flow faucet aerators, hose end shut-off nozzles, and toilet leak detection tablets.

*MCWD sees education and community outreach as a very important tool in communicating the importance of conserving water.*

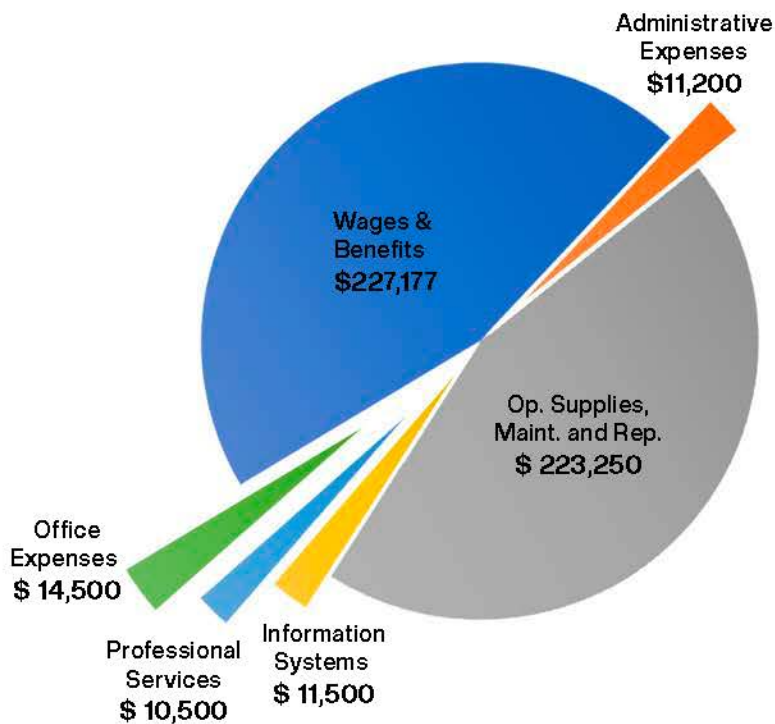


## Strategic Plan

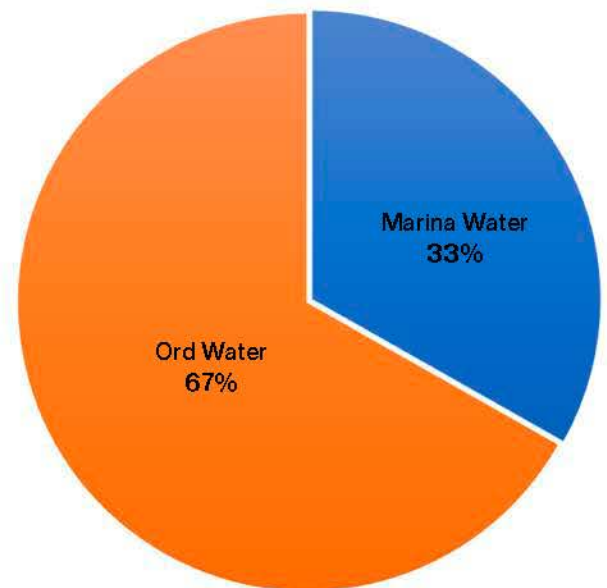
- Increased Data Processing budget to obtain Landscape Area Measurements and GIS mapping of accounts
- Continue printing for more billing inserts
- \$25K for Demonstration Landscape improvements
- Develop alternative conservation projects

Conservation	2020-2021 ACTUAL	2021-2022 ADOPTED	2021-2022 ESTIMATED	2022-2023 ADOPTED	BUD vs BUD % CHANGE
Wages and Benefits	181,834	208,086	195,402	227,177	9.2%
Administrative Expense	5,527	11,200	11,201	11,200	0.0%
Op. Supplies, Maint. and Rep.	83,922	195,300	138,885	223,250	14.3%
Information Systems	1,195	1,500	1,500	11,500	666.7%
Professional Services	4,800	5,500	6,555	10,500	90.9%
Office Expenses	8,844	16,500	14,000	14,500	-12.1%
<b>Total - Conservation Exp</b>	<b>286,123</b>	<b>438,086</b>	<b>367,543</b>	<b>498,127</b>	<b>13.7%</b>

Expenses by Category



Expenses by Cost Center



# CONSERVATION EXPENSES BY COST CENTER

## Marina Water

Account Name	2020-2021 ACTUAL	2021-2022 ADOPTED	2021-2022 ESTIMATED	2022-2023 ADOPTED	BUD vs BUD % CHANGE
Wages and Benefits	52,960	60,344	56,769	70,425	16.7%
Administrative Expense	1,759	4,298	4,298	4,422	2.9%
Op. Supplies, Maint. and Rep.	26,986	74,085	57,390	78,905	6.5%
Information Systems	347	435	435	3,565	719.5%
Professional Services	2,352	1,595	2,336	3,045	90.9%
Office Expenses	3,443	6,225	5,500	4,975	-20.1%
<b>Total Expense</b>	<b>87,846</b>	<b>146,982</b>	<b>126,728</b>	<b>165,337</b>	<b>12.5%</b>

## Ord Water

Account Name	2020-2021 ACTUAL	2021-2022 ADOPTED	2021-2022 ESTIMATED	2022-2023 ADOPTED	BUD vs BUD % CHANGE
Wages and Benefits	128,874	147,742	138,633	156,752	6.1%
Administrative Expense	3,768	6,902	6,902	6,778	-1.8%
Op. Supplies, Maint. and Rep.	56,936	121,215	81,495	144,345	19.1%
Information Systems	849	1,065	1,065	7,935	645.1%
Professional Services	2,448	3,905	4,219	7,455	90.9%
Office Expenses	5,402	10,275	8,500	9,525	-7.3%
<b>Total Expense</b>	<b>198,277</b>	<b>291,104</b>	<b>240,815</b>	<b>332,790</b>	<b>14.3%</b>

# ENGINEERING

The Engineering Department is responsible for the planning, design, and construction of the District's infrastructure to provide safe affordable potable water, recycled water, and wastewater collection. The Department formulates the District's Master Plans for each service to accommodate the necessary capacity for residential and commercial development demands. The Master Plans are implemented through the District's Five-Year Capital Improvement Plan and annual Capital Improvement Plans.

The Department is responsible for the review of development plans to verify they are compliant with current District ordinances and specifications. Once development plans have been approved the department is entrusted with the inspection of the infrastructure installed by the developer contractors.

Along with developer-sponsored projects, the Engineering Department is charged with managing the District's own Capital Improvement projects. The Department is



responsible for the planning, bidding, and construction management of District-sponsored projects ensuring they are constructed pursuant to the District plans, specifications, processes, and procedures. The Engineering Department also manages the District's system maps, models, and GIS systems updating them as the District continues to grow.

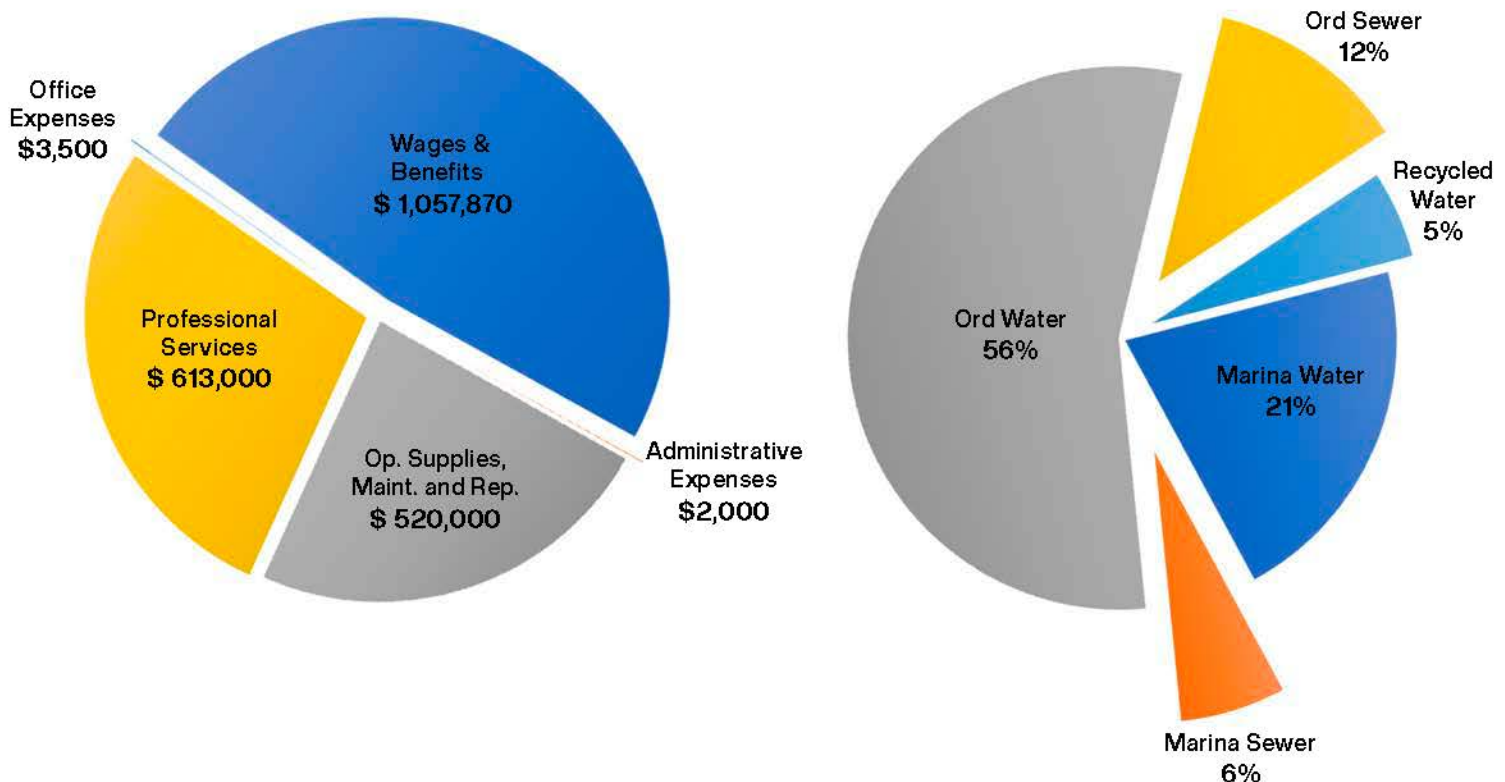
District systems are operating appropriately and manage the replacement of the existing infrastructure to maintain service in accordance with current law, codes, or permits.

Engineering will address improvements and expansion plans for water delivery and waste water collections.

Finally, the Department works closely with the Operations Department to keep the current

	2020-2021 ACTUAL	2021-2022 ADOPTED	2021-2022 ESTIMATED	2022-2023 ADOPTED	BUD vs BUD % CHANGE
<b>Engineering</b>					
Wages and Benefits	947,082	1,047,390	659,321	1,057,870	10%
Administrative Expense	2,003	2,000	540	2,000	0.0%
Op. Supplies, Maint. and Rep.	315,160	455,500	592,688	520,000	14.2%
Professional Services	72,085	226,200	63,779	613,000	171.0%
Office Expenses	-	3,000	-	3,500	16.7%
<b>Total - Engineering Exp</b>	<b>1,336,329</b>	<b>1,734,090</b>	<b>1,316,327</b>	<b>2,196,370</b>	<b>26.7%</b>

**Expenses by Category**



# ENGINEERING EXPENSES BY COST CENTER

## Marina Water

Account Name	2020-2021 ACTUAL	2021-2022 ADOPTED	2021-2022 ESTIMATED	2022-2023 ADOPTED	BUD vs BUD % CHANGE
Wages and Benefits	227,982	251,375	148,532	278,507	10.8%
Administrative Expense	534	480	130	520	8.3%
Op. Supplies, Maint. and Rep.	20,977	53,500	342,273	65,000	215%
Professional Services	17,537	34,100	12,924	120,000	2519%
Office Expenses	-	720	-	910	26.4%
<b>Total Expense</b>	<b>267,030</b>	<b>340,175</b>	<b>503,858</b>	<b>464,937</b>	<b>36.7%</b>

## Marina Sewer

Account Name	2020-2021 ACTUAL	2021-2022 ADOPTED	2021-2022 ESTIMATED	2022-2023 ADOPTED	BUD vs BUD % CHANGE
Wages and Benefits	56,613	52,368	28,748	52,443	0.1%
Administrative Expense	56	100	27	100	0.0%
Op. Supplies, Maint. and Rep.	1,908	10,000	5,490	25,000	150.0%
Professional Services	5,726	6,750	2,321	61,000	803.7%
Office Expenses	-	150	-	175	16.7%
<b>Total Expense</b>	<b>64,303</b>	<b>69,368</b>	<b>36,587</b>	<b>138,718</b>	<b>100.0%</b>

# ENGINEERING EXPENSES BY COST CENTER

## Ord Water

Account Name	2020-2021 ACTUAL	2021-2022 ADOPTED	2021-2022 ESTIMATED	2022-2023 ADOPTED	BUD vs BUD % CHANGE
Wages and Benefits	530,137	607,490	356,349	597,457	-1.7%
Administrative Expense	1,282	1,160	313	1,140	-1.7%
Op. Supplies, Maint. and Rep.	160,053	358,000	113,493	375,000	4.7%
Professional Services	39,300	69,300	34,430	240,000	246.3%
Office Expenses	-	1,740	-	1,995	14.7%
<b>Total Expense</b>	<b>730,773</b>	<b>1,037,690</b>	<b>504,585</b>	<b>1,215,592</b>	<b>17.1%</b>

## Ord Sewer

Account Name	2020-2021 ACTUAL	2021-2022 ADOPTED	2021-2022 ESTIMATED	2022-2023 ADOPTED	BUD vs BUD % CHANGE
Wages and Benefits	132,350	136,157	125,692	129,463	-4.9%
Administrative Expense	131	260	70	240	-7.7%
Op. Supplies, Maint. and Rep.	132,221	34,000	129,261	50,000	47.1%
Professional Services	9,521	21,050	11,405	82,000	289.5%
Office Expenses	-	390	-	420	7.7%
<b>Total Expense</b>	<b>274,223</b>	<b>191,857</b>	<b>266,428</b>	<b>262,123</b>	<b>36.6%</b>

# ENGINEERING EXPENSES BY COST CENTER

## Recycled Water

Account Name	2020-2021 ACTUAL	2021-2022 ADOPTED	2021-2022 ESTIMATED	2022-2023 ADOPTED	BUD vs BUD % CHANGE
Wages and Benefits	-	-	-	-	-
Administrative Expense	-	-	-	-	-
Op. Supplies, Maint. and Rep.	-	-	2,171	5,000	-
Professional Services	-	95,000	2,698	110,000	16%
Office Expenses	-	-	-	-	-
<b>Total Expense</b>	-	<b>95,000</b>	<b>4,869</b>	<b>115,000</b>	<b>21%</b>

# WATER RESOURCES

The Water Resources Department is responsible for managing the District's Groundwater Sustainability Agency that is implementing the Monterey Sub-basin Groundwater Sustainability Plan adopted by the MCWD Board in January of 2022. The sustainability plan is a 50-year plan that contemplates becoming sustainable within 20 years and remaining sustainable for the next 30 years. Sustainability is defined as reaching sustainability across these six sustainability indicators; lowering of groundwater levels, reduction of groundwater storage, seawater intrusion, degradation of water quality, land subsidence, and surface water depletion.

The Water Resources Department is also responsible for the District's Conservation program implementation which includes [DEMIO](#) data collection and reporting, water conservation incentive programs, water use surveys, Conservation Certification program for property transfers, public outreach for conservation, and the water conservation and science in-school education program. Finally, the Water Resources Department is managing the District's Climate Action Plan development and the implementation of the District's Imjin Office Park office improvements.

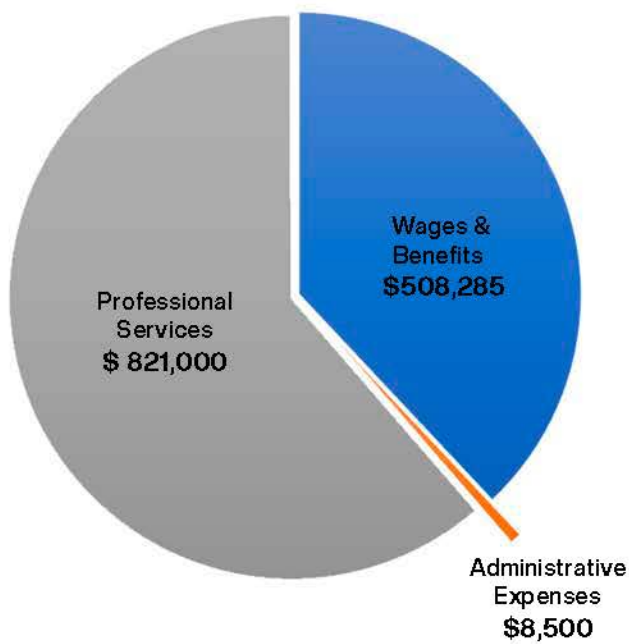


## Strategic Plan

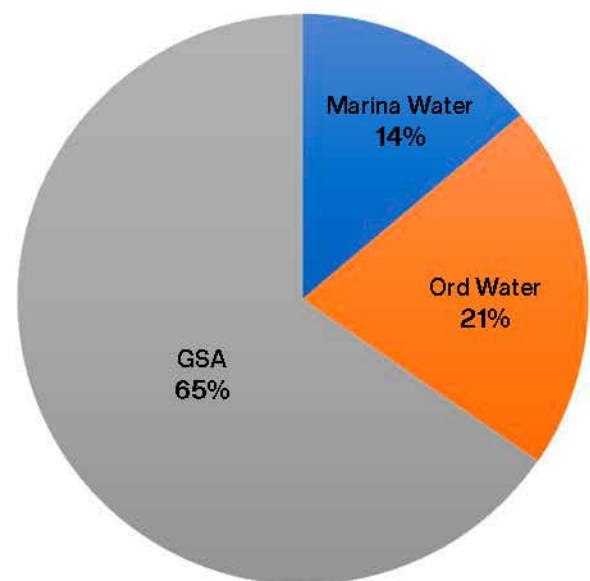
- Implementation of the Monterey Sub-Basin Groundwater Sustainability Plan Efforts & Studies
- GSP Implementation/Annual Reporting/Seawater Intrusion Monitoring & Regional Participation
- Groundwater Monitoring/Induction Logging
- Indirect Potable & Reuse Source Water Study & Scoping Efforts(Future Grant Opportunity)
- On-going consulting services through June

	2020-2021	2021-2022	2021-2022	2022-2023	BUD vs BUD
Water Resources	ACTUAL	ADOPTED	ESTIMATED	ADOPTED	% CHANGE
Wages and Benefits	220,136	210,102	197,270	508,285	141.9%
Administrative Expense	72,370	7,000	556,256	8,500	21.4%
Professional Services	799,371	880,000	416,298	821,000	-6.7%
<b>Total Expenses</b>	<b>1,091,877</b>	<b>1,097,102</b>	<b>1,169,824</b>	<b>1,337,785</b>	<b>21.9%</b>

Expenses by Category



Expenses by Cost Center



# WATER RESOURCES EXPENSES BY COST CENTER

## Marina Water

Account Name	2020-2021 ACTUAL	2021-2022 ADOPTED	2021-2022 ESTIMATED	2022-2023 ADOPTED	BUD vs BUD % CHANGE
Wages and Benefits	87,784	84,041	79,088	81,327	-3.2%
Administrative Expense	28,948	2,800	216,832	1,800	-35.7%
Professional Services	319,450	352,000	172,189	102,000	-71.0%
<b>Total Expense</b>	<b>436,182</b>	<b>438,841</b>	<b>468,109</b>	<b>185,127</b>	<b>-57.8%</b>

## Ord Water

Account Name	2020-2021 ACTUAL	2021-2022 ADOPTED	2021-2022 ESTIMATED	2022-2023 ADOPTED	BUD vs BUD % CHANGE
Wages and Benefits	132,351	126,061	118,182	121,989	-3.2%
Administrative Expense	43,422	4,200	325,249	2,700	-35.7%
Professional Services	479,921	528,000	258,284	153,000	-71.0%
<b>Total Expense</b>	<b>655,694</b>	<b>658,261</b>	<b>701,715</b>	<b>277,689</b>	<b>-57.8%</b>

## Groundwater Sustainability Agency

Account Name	2020-2021 ACTUAL	2021-2022 ADOPTED	2021-2022 ESTIMATED	2022-2023 ADOPTED	BUD vs BUD % CHANGE
Wages and Benefits	-	-	-	304,969	-
Administrative Expense	-	-	-	4,000	-
Professional Services	-	-	-	566,000	-
<b>Total Expense</b>	<b>-</b>	<b>-</b>	<b>-</b>	<b>874,969</b>	<b>-</b>

# 22/23 CAPITALIZED EQUIPMENT BUDGET

## DISTRICT WIDE

Account Name	20/21 Actual	21/22 Adopted	21/22 Estimated	22/23 Adopted	BUD vs BUD % Change
Laboratory	-	-	-	-	0.0%
Network Computer System	-	20,000	20,000	300,000	1400.0%
Vehicles	-	100,000	-	200,000	0.0%
O&M Equipment	331,397	520,000	340,000	896,000	72.3%
<b>Total Expense</b>	<b>331,397</b>	<b>640,000</b>	<b>360,000</b>	<b>1,396,000</b>	<b>118.1%</b>

	Itemized	Total
<b>Network Computer System</b>		
Security and Monitoring Improvements	300,000	
Server	-	
Network Infrastructure	-	300,000
<b>Vehicles</b>		
(2) Replacement Fleet Trucks (F150) ordered in FY 2022 but not rec'd	100,000	
Board Vehicle Replacement Policy @ \$100,000/year*	100,000	200,000
<b>O&amp;M Equipment</b>		
(3) Replacement Generators ordered in FY 2022 but not rec'd	140,000	
(1) Replacement Generators ordered in FY 2022 but not rec'd	40,000	
D Booster Generator Replacement	80,000	
Water Service Truck	180,000	
Sewer Service Truck	180,000	
Mini Excavator	69,000	
Well 11 Motor	38,000	
Well 29 Motor	41,000	
Motor Control Center replacement Weitenmyer	29,000	
Motor Control Center replacement Hodges	29,000	
Ground Penetration Radar Unit	35,000	
POSM Server	35,000	896,000
<b>Total</b>		<b>1,396,000</b>

# 22/23 CAPITALIZED EQUIPMENT BUDGET COST CENTER

## Marina Water

Account Name	20/21 Actual	21/22 Adopted	21/22 Estimated	22/23 Adopted
Laboratory	-	-	-	-
Network Computer System	-	4,800	4,800	72,000
Vehicles	-	24,000	-	52,000
O&M Equipment	71,897	86,000	86,000	115,160
<b>Total Expense</b>	<b>71,897</b>	<b>114,800</b>	<b>90,800</b>	<b>239,160</b>

## Marina Sewer

Account Name	20/21 Actual	21/22 Adopted	21/22 Estimated	22/23 Adopted
Laboratory	-	-	-	-
Network Computer System	-	1,000	1,000	15,000
Vehicles	-	5,000	-	10,000
O&M Equipment	36,997	141,350	102,850	107,550
<b>Total Expense</b>	<b>36,997</b>	<b>147,350</b>	<b>103,850</b>	<b>132,550</b>

## Ord Water

Account Name	20/21 Actual	21/22 Adopted	21/22 Estimated	22/23 Adopted
Laboratory	-	-	-	-
Network Computer System	-	11,600	11,600	174,000
Vehicles	-	58,000	-	114,000
O&M Equipment	64,037	87,000	84,000	309,120
<b>Total Expense</b>	<b>64,037</b>	<b>156,600</b>	<b>95,600</b>	<b>597,120</b>

## Ord Sewer

Account Name	20/21 Actual	21/22 Adopted	21/22 Estimated	22/23 Adopted
Laboratory	-	-	-	-
Network Computer System	-	2,600	2,600	39,000
Vehicles	-	13,000	-	24,000
O&M Equipment	158,466	205,650	67,150	364,170
<b>Total Expense</b>	<b>158,466</b>	<b>221,250</b>	<b>69,750</b>	<b>427,170</b>

## 22/23 CAPITAL IMPROVEMENT PROJECT BUDGET

### BY FUNDING SOURCE

Project No.	Project Name	Bond Funded	Capacity Fee Funded	SRF	Other Source Funded	Capital Replacement Reserves	Amount
GW-0112	A1/A2 BC booster improvements	\$4,561,843					\$4,561,843
GW-0378	Well 12 Rehab					\$100,000	\$100,000
OS-0147	Ord Village LS and FM improvements	\$500,000					\$500,000
OS-0152	Booker Lift Station Replacement	\$610,500					\$610,500
OS-0153	Misc. Lift Station Improvements	\$1,066,000					\$1,066,000
OS-0218	Gigling Lift Station Renovation	\$1,000,000					\$1,000,000
OS-0348	Odor Control Program	\$100,000					\$100,000
OS-2301	CIPP Lining of 1st St. Sewer Lines (550')					\$70,000	\$70,000
OS-2303	Hatten LS improvements	\$100,000					\$100,000
OS-2304	Hodges Lift Station pump and discharge replacement to Flygt					\$150,000	\$150,000
OS-2305	Manhole rehab and lining Lightfighter 21 Manholes					\$150,000	\$150,000
OW-0193	Imjin parkway Pipeline, Reservation Rd to Abrams Drive	\$318,044					\$318,044
OW-0201	Gigling Road Water Pipeline Replacement	\$99,000					\$99,000
OW-0306	D-Zone Booster Pump Replacement	\$100,000					\$100,000
OW-2302	East Garrison 2nd supply via Watkins Gate and F Reservoir		\$1,250,000				\$1,250,000
OW-2306	Ord blight removal, demolition				\$970,000		\$970,000
RW-0174	RUWAP - Distribution System			\$2,809,896			\$2,809,896
RW-2307	RUWAP				\$400,000		\$400,000
WD-0106	Corp Yard Demolition & Rehab	\$250,000					\$250,000
WD-0379	Beach Office Corrosion improvements					\$70,000	\$70,000
WD-2308	SCADA Improvements					\$400,000	\$400,000
WD-2309	Water/sewer pipeline replacement program R/R					\$275,000	\$275,000
		<b>\$8,705,387</b>	<b>\$1,250,000</b>	<b>\$2,809,896</b>	<b>\$1,370,000</b>	<b>\$1,215,000</b>	<b>\$15,350,283</b>

# 22/23 CAPITAL IMPROVEMENT PROJECT BUDGET

## BY COST CENTER

Project No.	Project Name	MW	MS	OW	OS	RW	Amount
GW-0112	A1/A2 BC booster improvements	\$2,965,198		\$1,596,645			\$4,561,843
GW-0378	Well 12 Rehab	\$100,000					\$100,000
OS-0147	Ord Village LS and FM improvements				\$500,000		\$500,000
OS-0152	Booker Lift Station Replacement				\$610,500		\$610,500
OS-0153	Misc. Lift Station Improvements				\$1,066,000		\$1,066,000
OS-0218	Gigling Lift Station Renovation				\$1,000,000		\$1,000,000
OS-0348	Odor Control Program				\$100,000		\$100,000
OS-2301	CIPP Lining of 1st St. Sewer Lines (550')				\$70,000		\$70,000
OS-2303	Hatten LS improvements				\$100,000		\$100,000
OS-2304	Hodges Lift Station pump and discharge replacement to Flygt				\$150,000		\$150,000
OS-2305	Manhole rehab and lining Lightfighter 21 Manholes				\$150,000		\$150,000
OW-0193	Imjin parkway Pipeline, Reservation Rd to Abrams Drive			\$318,044			\$318,044
OW-0201	Gigling Road Water Pipeline Replacement			\$99,000			\$99,000
OW-0306	D-Zone Booster Pump Replacement			\$100,000			\$100,000
OW-2302	East Garrison 2nd supply via Watkins Gate and F Reservoir			\$1,250,000			\$1,250,000
OW-2306	Ord blight removal, demolition			\$485,000	\$485,000		\$970,000
RW-0174	RUWAP - Distribution System					\$2,809,896	\$2,809,896
RW-2307	RUWAP					\$400,000	\$400,000
WD-0106	Corp Yard Demolition & Rehab	\$65,000	\$12,500	\$142,500	\$30,000		\$250,000
WD-0379	Beach Office Corrosion improvements	\$18,200	\$3,500	\$39,900	\$8,400		\$70,000
WD-2308	SCADA Improvements	\$200,000		\$200,000			\$400,000
WD-2309	Water/sewer pipeline replacement program R/R	\$71,500	\$13,750	\$156,750	\$33,000		\$275,000
		<b>\$3,419,898</b>	<b>\$29,750</b>	<b>\$4,387,839</b>	<b>\$4,302,900</b>	<b>\$3,209,896</b>	<b>\$15,350,283</b>

# 22/23 DISTRICT INVESTMENTS

Per the District’s Investment Policy, “the District invests prudently in order to safeguard the invested principal and accrued interest and to produce an acceptable rate of return after first considering safety and liquidity”. Currently, all District investments are fully liquid with the majority invested in the State of California’s Local Agency Investment Fund (“LAIF”) and the remaining in several demand deposit accounts with Mechanics Bank. The District’s total estimated investments as of June 30, 2022, are \$22,292,288.

LAIF is part of the State’s Pooled Money Investment Account (“PMIA”) and is managed by the California State Treasurer’s Office. LAIF is the most popular investment option among California local public agencies due to its convenience, low cost, and its emphasis on safety (by investing in U.S. Treasury securities) and liquidity (by investing primarily in short-term securities). The District’s estimated balance in LAIF as of June 30, 2022, is \$19,409,411.

Mechanics Bank demand deposit accounts are comprised of three (3) money market accounts and two (2) checking accounts. The California Government Code requires that a financial institution secure deposits made by state or local governmental units by pledging securities in an undivided collateral pool held by a depository regulated under state law (unless so waived by the governmental unit). The market value of the pledged securities in the collateral pool must equal at least 110% of the total amount deposited by the public agencies. The District’s estimated balances of the five deposit accounts with Mechanics Bank as of June 30, 2022, are as follows:

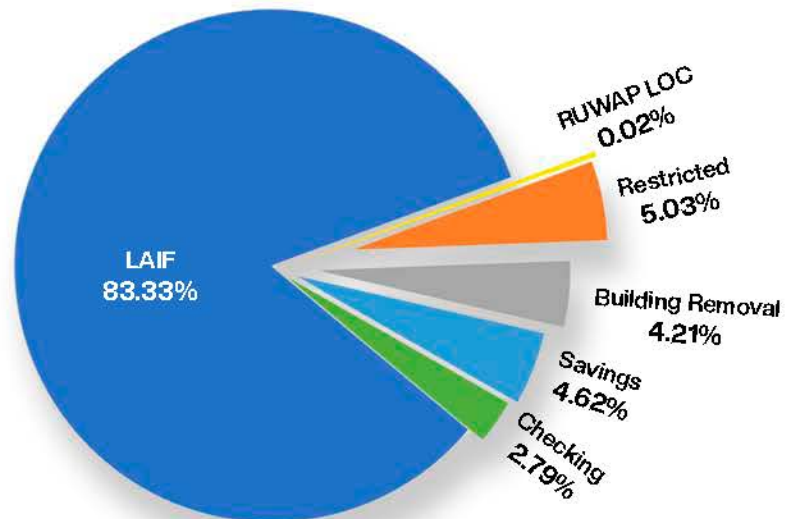
MCWD Balances at Mechanics Bank

Account	Account Type	Estimated Balance
Savings	Money Market	\$ 1,076,611
Building Removal Fund	Money Market	\$ 980,603
Restricted Funds	Money Market	\$ 1,170,535
RUWAP LOC Proceeds	Checking	\$ 4,380
Checking Account	Checking	\$ 650,748

## LOCAL AGENCY INVESTMENT FUND (LAIF)

Bank		Balance as of 12/31/2021 Amount	Projected Balance as of 06/30/2022 Amount
Local Agency Investment Fund (LAIF)		\$16,898,966	\$19,409,411
Marina Capital Repl Reserve Fund	1,675,599		
Marina Capacity Fee	1,538,489		
Marina General Reserve	819,927		
Ord Community Capital Repl Reserve Fund	529,442		
Ord Community Capacity Fee	9,547,973		
Ord Community General Reserve	2,615,708		
RUWAP Debt Reserve	171,828		
<b>Mechanics Bank</b>			
<b>Restricted Funds</b>		1,081,402	1,170,535
Marina Capacity Fees	-		
Ord Capacity Fees	1,081,402		
Building Removal Fund		978,060	980,603
RUWAP LOC Proceeds		4,380	4,380
Savings Account		1,075,214	650,748
Checking Account		2,201,690	2,201,690
<b>Total - District Investment</b>		<b>\$22,239,711</b>	<b>\$23,292,288</b>

Marina Coast Water District Projected Reserve  
Investment Summary as of June 30, 2022  
Budget FY 2022/2023



## 22/23 DISTRICT DEBT OBLIGATIONS

In accordance with the District's Debt Management Policy, the District issues debt for the purpose of financing the cost of design, acquisition, and/or construction of water, wastewater and recycled water system improvements in furtherance of the District's Capital Improvement Program (CIP). The District's debt obligations consist of the following debt instruments:

Description	Amount	Loan Date	Final Payment	Remaining Principal	Principal Amount	Total
2015 Series A Revenue Refunding Bonds	29,840,000	7/15/2015	6/1/2037	23,925,000	1,130,000	22,795,000
Santa Cruz County Bank Loan (Through Holman Capital - BLM Building)	2,799,880	1/20/2017	1/20/2037	2,364,501	102,887	2,261,614
2019 Series Certifictes Of Participation	17,725,000	12/18/2019	6/1/2051	16,945,000	340,000	16,605,000
State Revolving Fund Loan C-06-8184-110 Ruwa(P Transmission Pipeline	6,962,884	1/25/2018	3/30/2052	6,962,884	177,076	6,785,808
<b>Current Loan</b>	<b>57,327,764</b>			<b>50,197,385</b>	<b>1,749,963</b>	<b>48,447,422</b>

#### **Santa Cruz Bank Installment Loan (Holman Capital)**

On January 20, 2017, the District converted a construction loan that financed the construction of an office building at 940 2nd Avenue within Imjin Office Park in Marina which is currently leased to the Bureau of Land Management to a 20-year fixed rate loan. The installment loan in the amount of \$2,799,880 has a fixed all-in rate of 5.75%. Commercial loan rates were at 5.00% - 7.00% for loan above \$250,000+ at time of offer. There is no prepayment penalty on the installment loan, so the District has the ability to refinance it. Debt service payments are as follows:

Year	Principal	Interest	Total
2022	97,217	\$140,171	237,388
2023	102,887	134,501	237,388
2024	108,888	128,500	237,388
2025	115,240	122,148	237,388
2026	121,961	115,427	237,388
2027 - 2031	725,179	461,762	1,186,941
2032 - 2036	962,816	224,124	1,186,940
2037	227,530	9,859	237,389

#### **State Revolving Fund (SRF) Loan**

On January 28, 2018, the District entered into a construction installment sale agreement and grant (the "Agreement") with the California State Revolving Fund Loan Program for the construction of the Regional Urban Water Augmentation Project ("RUWAP") transmission pipeline with a maximum amount of \$10,513,217 at an interest rate of 1.8% per annum and a completion date of September 30, 2020. However, the State amended the contract completion date to coincide with the completion date of the distribution system of March 30, 2022. Per the Agreement, there is no interest during construction and has a maximum grant component of \$3,595,789. The first debt service payment will be due March 30, 2023. Debt service payments are as follows:

Year	Principal	Interest	Total
2022	\$177,076	\$125,332	\$302,408
2023	180,263	122,145	302,408
2024	183,508	118,900	302,408
2025	186,811	115,597	302,408
2026	190,174	112,234	302,408
2027	1,003,466	508,574	1,512,040
2028 - 2032	1,097,088	414,952	1,512,040
2033 - 2037	1,199,445	312,595	1,512,040
2043 - 2047	1,311,352	200,688	1,512,040
2048 - 2052	1,433,700	70,269	1,503,969

### 2015 Enterprise Refunding Revenue Bonds

On June 30, 2015, the District issued 2015 Senior Lien Enterprise Revenue Refunding Bonds, Tax-Exempt Series A in the amount of \$29,840,000 and Federally Taxable Series B in the amount of \$1,115,000 (the "Bonds"). The Bonds were issued to refinance the District's outstanding 2006 Certificates of Participation (COPs) which were issued for the purpose of financing improvements to the District's water and wastewater systems and to refinance prior obligations. The Bonds, which closed on July 15, 2015, were an advance refunding of the 2006 COPs as the COPs were not callable until June 1, 2016. An escrow account, funded with treasury securities, was set up and used to pay the 2006 COPs. A portion of the 2006 COPs were utilized to refinance prior obligations on an advance basis. As a result, the Taxable Series B were required to refund a portion of the 2006 COPs. The true interest cost, which includes all annualized costs, is 3.712% for the Series A Bonds and 1.544% for the Series B Bonds.

Year	Principal	Interest	Total
2022	\$1,090,000	\$1,162,600	\$2,252,600
2023	1,130,000	1,119,000	2,249,000
2024	1,190,000	1,062,500	2,252,500
2025	1,235,000	1,014,900	2,249,900
2026	1,300,000	953,150	2,253,150
2027 - 2031	7,525,000	3,724,500	11,249,500
2032 - 2036	9,400,000	1,853,263	11,253,263
2037	2,145,000	107,250	2,252,250

### 2019 Enterprise Revenue Certificates of Participation (COPs)

On December 19, 2019, the District issued COPs in the amount of \$17,725,000. The COPs were issued to finance \$19,500,000 of required capital improvement projects including, but not limited to, the construction of pipeline improvements, replacement of booster pumps, lift station enhancements, construction of reservoir tanks, acquisition of emergency generators at key well sites, booster stations, and sewer pumping facilities to maintain operation during power outages. The true cost for the transaction, which included all annualized costs, is 2.99% over a thirty-year period.

Year	Principal	Interest	Total
2022	\$325,000	\$679,700	\$1,004,700
2023	340,000	666,700	1,006,700
2024	355,000	653,100	1,008,100
2025	365,000	638,900	1,003,900
2026	385,000	620,650	1,005,650
2027-2031	2,235,000	2,794,250	5,029,250
2032-2036	2,815,000	2,211,850	5,026,850
2037-2041	3,435,000	1,595,300	5,030,300
2042-2046	\$4,170,000	860,400	5,030,400
2047-2049	\$2,845,000	172,350	3,017,350

# DEBT SERVICE COVERAGE

	Marina		Ord		RUWAP	TOTAL
	Water	Sewer	Water	Sewer		
<b>GROSS REVENUES</b>						
Water sales	\$4,692,419	\$-	\$10,652,534	\$-	\$-	\$15,344,952
Sewer sales	-	1,583,341	-	3,638,763	-	5,222,104
Other water sales	-	-	-	-	-	-
Recycled Water sales	-	-	-	-	1,636,556	1,636,556
Capacity/capital fee	424,050	147,500	6,753,750	1,659,900	-	8,985,200
Interest revenue	25,000	11,040	70,400	24,135	-	130,575
Other revenue	183,174	8,659	631,726	18,302	-	841,861
Grant revenue	284,234	-	426,350	-	-	710,584
Revenue adjustment	-	-	-	-	-	-
<b>Total gross revenues</b>	<b>\$5,608,877</b>	<b>\$1,750,540</b>	<b>\$18,534,760</b>	<b>\$5,341,100</b>	<b>\$1,636,556</b>	<b>\$32,871,833</b>
<b>OPERATING EXPENSES</b>						
Salaries	2,070,781	603,005	4,073,367	1,147,164	143,099	8,037,416
Dept. expenses	2,524,112	376,299	5,517,059	785,956	2,594,751	11,798,177
Franchise & admin fees	-	-	133,543	47,159	-	180,702
Expense adjustment	-	-	-	-	-	-
<b>Total operating expenses</b>	<b>4,594,893</b>	<b>979,303</b>	<b>9,723,969</b>	<b>1,980,279</b>	<b>2,737,850</b>	<b>20,016,295</b>
<b>NET AVAILABLE REVENUES</b>	<b>1,013,984</b>	<b>771,236</b>	<b>8,810,791</b>	<b>3,360,821</b>	<b>(1,101,294)</b>	<b>12,855,538</b>
<b>DEBT SERVICE</b>						
2015 Revenue Refunding Bonds	179,920	112,450	1,079,520	359,840	517,270	2,249,000
Santa Cruz County Bank Loan	66,468	18,991	118,694	33,234	-	237,387
2019 Certificates of Participation	258,487	99,409	284,153	364,651	-	1,006,700
State Revolving Fund Loan	-	-	-	-	302,408	302,408
#C-06-8184-110 (RUWAP Transmission Pipeline)	-	-	-	-	-	-
	<b>504,875</b>	<b>230,850</b>	<b>1,482,367</b>	<b>757,725</b>	<b>819,678</b>	<b>3,795,495</b>
<b>TOTAL DEBT SERVICE</b>						
<b>DEBT COVERAGE RATIO</b>	<b>2.01</b>	<b>3.34</b>	<b>5.94</b>	<b>4.44</b>	<b>-1.34</b>	<b>3.39</b>
<b>MINI. COV. RATIO FOR ALL DEBT SERV.</b>	<b>1.25</b>	<b>1.25</b>	<b>1.25</b>	<b>1.25</b>	<b>1.25</b>	<b>1.25</b>

# 22/23 DISTRICT RESERVE FUNDS

Adequate reserves ensure that the District will at all times have sufficient funding available to meet its operating, capital, and debt service cost obligations, together with the ability to fund future debt or capital obligations, as well as any unfunded mandates, including regulatory requirements. While budgeted reserves for FY 2022-2023, do not meet all the District's target levels per its Reserve Policy, a cost of service and rate study is budgeted for FY 2022-2023 in which reserve levels will be a major consideration.

TRANSFERS TO/(FROM) RESERVES, NET							
	MW	MS	OW	OS	RW	GSA	TOTAL
<b>Capacity Charge/Capital Surcharge Fund:</b>							
Capacity Fees/Capital Surcharges	262,911	35,400	3,241,800	1,377,717	2,701,810	-	7,619,638
Capital Costs	-	-	(1,250,000)	-	(400,000)	-	(1,650,000)
Annual Debt Service Share	-	-	(241,311)	(148,952)	(641,247)	-	(1,031,510)
	<b>262,911</b>	<b>35,400</b>	<b>1,750,489</b>	<b>1,228,765</b>	<b>1,660,563</b>	<b>-</b>	<b>4,938,128</b>
<b>Capital Replacement &amp; Improvement Fund:</b>							
Transfers from Operations	-	205,180	889,166	758,817	-	-	1,853,163
Transfers to Operations	(197,690)				-	-	(197,690)
Trans. Buy-In portion of Cap. Fees/Cap. Sur.	93,291	112,100	877,988	282,183	-	-	1,365,562
Capital Costs	(3,419,898)	(29,750)	(3,137,839)	(4,302,900)	(2,809,896)	-	(13,700,283)
2019 Debt Proceeds	3,030,198	12,500	2,256,189	3,406,500	-	-	8,705,387
SRF Loan Proceeds					2,809,896	-	2,809,896
Building Removal Proceeds			485,000	485,000	-	-	970,000
	<b>(494,099)</b>	<b>300,030</b>	<b>1,370,504</b>	<b>629,600</b>	<b>-</b>	<b>-</b>	<b>1,806,035</b>
<b>Operating Reserve Fund</b>							
Transfer from Operations	-	-	-	-	-	-	-
Transfer to Operations	-	-	-	-	(1,278,370)	-	(1,278,370)
	<b>-</b>	<b>-</b>	<b>-</b>	<b>-</b>	<b>(1,278,370)</b>	<b>-</b>	<b>(1,278,370)</b>
<b>TRANSFERS TO/(FROM) RESERVES, NET</b>	<b>(231,188)</b>	<b>335,430</b>	<b>3,120,993</b>	<b>1,858,365</b>	<b>382,193</b>	<b>-</b>	<b>5,465,793</b>

MCWCD maintains both restricted reserve funds and Board-designated reserve funds.

Restricted reserve funds are comprised of proceeds from the sale of bonds, or any form of debt as governed by the corresponding financing documentation, monies from other agencies, and capacity charges. The District's restricted reserve funds include:

#### **RUWAP-110 Debt Reserve Fund**

This reserve fund was set up in March 2022 per the loan agreement with the State Revolving Fund which funded the construction of the recycled water transmission pipeline. The balance and earnings are to remain in the fund for the life of the loan and will be used to pay the final debt service payment of the loan in March 2052. The target level for this fund was predetermined by the loan agreement and is fully funded.

Description	MW	MS	OW	OS	RUWAP	GSA	TOTAL
<b>FY 2022-2023 RUWAP-110</b>	-	-	-	-	<b>171,828</b>	-	<b>171,828</b>
<b>Debt Reserve Fund</b>							

#### **Capacity Charge/Capital Surcharge Fund**

The monies in this fund are collected from developers and are restricted to pay for the new new facilities necessary to deliver water and wastewater service to the newly developed property. The reserve fund is drawn upon as capital expenditures are made. The balance in this account fluctuates depending on the number and timing of development projects and therefore, no minimum or maximum target levels have been established.

Description	MW	MS	OW	OS	RUWAP	GSA	TOTAL
<b>FY 2022-2023 Cap.Charge/Cap. Sur.Fund</b>							
Beginning Balance	1,347,870	277,013	8,612,117	2,118,804	-	-	12,355,804
Proposed Cap. Fees/Cap. Sur.	262,911	35,400	3,241,800	1,377,717	2,701,810	-	7,619,638
Proposed Capital Costs	-	-	(1,250,000)	-	(400,000)	-	(1,650,000)
Annual Debt Service Share	-	-	(241,311)	(148,952)	(641,247)	-	(1,031,510)
Intrafund Transfers	-	-	-	-	-	-	-
Due to/(Due From) Interfund Transfers	-	-	-	-	-	-	-
<b>Proposed Ending Balance as of 06-30-2023</b>	<b>1,610,781</b>	<b>312,413</b>	<b>10,362,606</b>	<b>3,347,569</b>	<b>1,660,563</b>	<b>-</b>	<b>17,293,931</b>

The Board-designated reserve funds are comprised of the Rate Stabilization Fund, the Capital Replacement and Improvement Fund, the Emergency Fund, the Administrative & General Fund, and the Operating Reserve Fund. Currently, MCWD's Board-designated reserve funds include:

**Capital Replacement & Improvement Reserve Fund** - The Capital Replacement and Improvement Fund shall be used for the funding of the replacement of capital assets when they reach the end of their useful lives or improvements to any Component System. Each fiscal year, MCWD will strive to fund the Capital Replacement and Improvement Fund, based on the availability of funds, with an amount equal to the result of multiplying (a) the depreciation amount for the prior Fiscal Year by (b) an amount equal to up to 40% for the Marina Community and 20% for the Fort Ord Community. There shall be no minimum or maximum balance for the Capital Replacement and Improvement Fund.

Description	MW	MS	OW	OS	RUWAP	GSA	TOTAL
<b>FY 22-23 Cap. Repl. &amp; Improvement Fund</b>							
Beginning Balance	1,363,935	302,542	367,303	162,827	-	-	2,196,607
Prop. trans. from op. per Board Policy	200,000	100,000	200,000	100,000	-	-	600,000
Prop. trans. from op.	-	205,180	889,166	758,817	-	-	1,853,163
Prop. trans. to op.	(197,690)	-	-	-	-	-	(197,690)
Prop. Cap. Fees/Cap. Surcharges	93,291	112,100	877,988	282,183	-	-	1,365,562
Prop. Cap. Costs	(3,419,898)	(29,750)	(3,137,839)	(4,302,900)	(2,809,896)	-	(13,700,283)
2019 Debt Proceeds	3,030,198	12,500	2,256,189	3,406,500	-	-	8,705,387
SRF Loan Proceeds	-	-	-	-	2,809,896	-	2,809,896
Building Removal Bond Proceeds	-	-	485,000	485,000	-	-	970,000
Intrafund Transfers	-	-	-	-	-	-	-
Due to/(Due From) Interfund Transfers	-	-	-	-	-	-	-
<b>Proposed Ending Balance as of 06-30-2023</b>	<b>1,069,836</b>	<b>702,572</b>	<b>1,937,807</b>	<b>892,427</b>	<b>-</b>	<b>-</b>	<b>4,602,642</b>

**Administrative & General Fund** - The Administrative & General Fund can be used to fund certain general, administration, and overhead projects. It is intended to fund, or partially fund offices, fixtures, furnishings, vehicles, and equipment on a pay-as-you-go basis. This fund shall have a minimum balance of \$50,000 and a maximum balance of \$250,000.

Description	MW	MS	OW	OS	RUWAP	GSA	TOTAL
<b>FY 2022-2023 Administrative Reserve Fund</b>	<b>50,000</b>	<b>50,000</b>	<b>50,000</b>	<b>50,000</b>	-	-	<b>200,000</b>

**Operating Reserve Fund**- The Operating Reserve Fund is used for unanticipated operating expenses and is designated to be utilized for current operations and to meet routine cash flow needs. This fund may be routinely utilized by staff to cover temporary cash flow deficiencies caused by (i) timing differences between revenue and expenses; (ii) unexpected decreases in revenues; or (iii) unexpected increases in expenses. The target levels for this Fund shall have a minimum balance equal to 25% of the District's currently budgeted total operating expenses excluding depreciation and the maximum amount shall not exceed 50% of the currently budgeted total operating expenses excluding depreciation.

Description	MW	MS	OW	OS	RUWAP	GSA	TOTAL
<b>FY 2022-2023 Operating Reserve</b>							
Beginning Balance	12,892,904	3,841,902	(11,919,038)	13,412,697	(10,845,398)	-	7,383,067
Prop. trans. from operations	-	-	-	-	-	-	-
Prop. trans. to operations	-	-	-	-	(1,278,370)	-	(1,278,370)
Intrafund Transfers	-	-	-	-	-	-	-
Due to/(Due From) Interfund Transfers	(10,000,000)	(2,125,000)	12,000,000	(12,000,000)	12,125,000	-	-
<b>Prop. Ending Balance as of 06-30-2023</b>	<b>2,892,904</b>	<b>1,716,902</b>	<b>80,962</b>	<b>1,412,697</b>	<b>1,232</b>	-	<b>6,104,697</b>

## 22/23 STAFF POSITIONS

Job Title	Department	21/22 Position(s)	22/23 Position(s)	Approved Salary Range
General Manager	Administration	1	1	Contract
Director of Administrative Services	Administration	1	1	Range T41
Human Resources/Risk Administrator	Administration	1	1	Range U32
Executive Assistant to GM/Board	Administration	1	1	Range T21
IT Administrator	Administration	1	1	Range T29
Accounting Supervisor	Administration	1	1	Range 31
Accountant	Administration	1	1	Range 21
Accounting Technician	Administration	2	2	Range 15
Customer Service/Billing Supervisor	Administration	1	1	Range 28
Customer Service/Billing Technician I/II	Administration	5	5	Range 10
Meter Reader	Administration	2	2	Range 8
Water Conservation Specialist III	Conservation	1	1	Range 23
District Engineer	Engineering	1	1	Range T44
Senior Civil Engineer	Engineering	2	2	Range T33
Associate Engineer	Engineering	2	2	Range T29
Engineering Technician	Engineering	1	1	Range 15
Administrative Assistant	Engineering	1	1	Range 14
O&M Manager	Oper & Maint	1	1	Range T37
O&M Supervisor	Oper & Maint	1	1	Range 30
Operations & Maintenance Administrative Analyst	Oper & Maint	1	1	Range 18
Electrical/Mechanical Technician	Oper & Maint	1	1	Range 21
System Operator Lead	Oper & Maint	2	2	Range 23
System Operator II - Cross Conn. Control Specialist	Oper & Maint	0	1	Range 21
System Operator I/II	Oper & Maint	12	12	Range 19
Maintenance Worker	Oper & Maint	1	1	Range 15
Water Resources Manager	Water Resources	1	1	Range T34
Associate Engineer	Water Resources	0	1	Range T29
Water Resources Analyst II	Water Resources	0	1	Range 14
	<b>Totals</b>	<b>45</b>	<b>48</b>	

# MCWD GENERAL RATES, FEES, & CHARGES

Job Title	Rate (per hour)
General Manager	\$202.00
District Engineer	\$160.00
Director of Administrative Services	\$149.00
Senior Engineer	\$129.00
Associate Engineer	\$96.00
Engineering Administrative Assistant	\$84.00
Engineering Technician	\$64.00
O&M Manager	\$146.00
O&M Supervisor	\$125.00
O&M Electrical/Mechanical Field Technician	\$106.00
Operations & Maintenance System Lead Operator	\$92.00
Operations & Maintenance System Operator 2	\$97.00
Operations & Maintenance System Operator 1	\$71.00
Meter Reader	\$63.00
Conservation Specialist III	\$97.00
Water Resources Manager	\$132.00

All labor costs include 20% administrative Fee

District equipment rates based on the California State Transportation Agency's Labor Surcharge and Equipment Rental Rates

<https://dot.ca.gov/programs/construction/equipment-rental-rates-and-labor-surcharge>



Task	Cost
<b>Photocopy Charges</b>	\$ 0.20 / copy
<b>Meter Installtion (by size)</b>	
5/8" or 3/4"	\$385.00
1"	\$440.00
1 1/2"	\$495.00
2"	\$770.00
3" or Larger	Actual direct and indirect cost to district. Advance payment to be based on estimated cost.
Preliminary Project Review Fee (large projects)	\$550.00
<b>Plan Review Fees:</b>	
Existing Residential Modifications	\$220.00per unit plus additional fees
Existing Commercial Modifications	\$440.00 per unit plus additional fees
Plan Review	\$550.00per unit plus additional fees
Water/Sewer Permit Fee	\$35.00 each
Small Project Inspection Fee (single lot)	\$440.00 per unit
Large Project Inspection Fee (large projects)	\$550.00per unit plus 3% of water & sewer construction cost
Building Modification/Addition Fee	\$220.00per unit
Deposit for a Meter Relocation	\$220.00deposit, plus actual costs
Mark and Locate Fee (USA Markings)	\$110.00 first mark and locate at no-charge, each additional for \$100
Backflow/Cross Connection Control Fee	\$50.00 per device
Additional Backflow/Cross Connection Device	\$35.00 per device
Deposit for New Account/Re-Establish Account	\$40.00 per edu
Meter Test Fee	\$20.00 for 3/4" meter, actual cost for 1" and larger
Returned Check Fee	\$15.00 per returned item
Penalty	10%of the delinquent amount

District equipment rates based on the California State Transportation Agency's Labor Surcharge and Equipment Rental Rates  
<https://dot.ca.gov/programs/construction/equipment-rental-rates-and-labor-surcharge>



# APPENDIX A

## 22/23 MCWD CAPITAL IMPROVEMENT PROJECTS

### Capital Improvement Project Sheet

Project:	Zone A Tank and Improvements	Source: Master Plans
Project No:	GW-0112	
Cost Center	Ord Community Water; Marina Water	

<b>Project Description</b>

<b>Project Justification</b>

PROJECT COSTS:	FY 22/23	FY 23/24	FY 24/25	FY 25/26	FY 26/27	OUT YEARS	Total
<b>Cost Category / Phasing</b>							
<b>Planning</b>							
External Services							0
Internal Services							0
<b>Design</b>							
External Services							0
Internal Services							0
<b>Construction</b>							
External Services	4,561,843						4,561,843
Internal Services							0
<b>Property / Easement Acquisitions</b>							
							0
<b>Other Project Costs</b>							
							0
<b>Estimated Cost By Fiscal Year</b>	<b>4,561,843</b>	<b>0</b>	<b>0</b>	<b>0</b>	<b>0</b>	<b>0</b>	<b>4,561,843</b>

Project Funding / Cost Centers	G L Code	% Cost Splits	FY 22/23	FY 23/24	FY 24/25	FY 25/26	FY 26/27	OUT YEARS	Total
01 - Marina Water		65%	2,965,198	0	0	0	0	0	2,965,198
02 - Marina Sewer		0%	0	0	0	0	0	0	0
03 - Ft Ord Water		35%	1,596,645	0	0	0	0	0	1,596,645
04 - Ft Ord Sewer		0%	0	0	0	0	0	0	0
<b>Funding By Fiscal Year</b>			<b>4,561,843</b>	<b>0</b>	<b>0</b>	<b>0</b>	<b>0</b>	<b>0</b>	<b>4,561,843</b>

# Capital Improvement Project Sheet

Project:	Well 12 Rehab	Source: Operations/Maintenance
Project No:	GW-0378	
Cost Center	Marina Water	

## Project Description

Initial investigations to identify and develop rehabilitation requirements.

## Project Justification

Well 12 needs rehabilitation and treatment for high temperature and hydrogen sulfides in order to work as regular supply source.

PROJECT COSTS:	FY 22/23	FY 23/24	FY 24/25	FY 25/26	FY 26/27	OUT YEARS	Total
<b>Cost Category / Phasing</b>							
<b>Planning</b>							
External Services							0
Internal Services							0
<b>Design</b>							
External Services	100,000						100,000
Internal Services							0
<b>Construction</b>							
External Services							0
Internal Services							0
<b>Property / Easement Acquisitions</b>							
							0
<b>Other Project Costs</b>							
							0
<b>Estimated Cost By Fiscal Year</b>	<b>100,000</b>	<b>0</b>	<b>0</b>	<b>0</b>	<b>0</b>	<b>0</b>	<b>100,000</b>

Project Funding / Cost Centers	G L Code	% Cost Splits	FY 22/23	FY 23/24	FY 24/25	FY 25/26	FY 26/27	OUT YEARS	Total
01 - Marina Water		100%	100,000	0	0	0	0	0	100,000
02 - Marina Sewer		0%	0	0	0	0	0	0	0
03 - Ft Ord Water		0%	0	0	0	0	0	0	0
04 - Ft Ord Sewer		0%	0	0	0	0	0	0	0
<b>Funding By Fiscal Year</b>			<b>100,000</b>	<b>0</b>	<b>0</b>	<b>0</b>	<b>0</b>	<b>0</b>	<b>100,000</b>

# Capital Improvement Project Sheet

Project:	Ord Village Lift Station and Force Main Improvements	Source: Operations/Maintenance
Project No:	OS-0147	
Cost Center	Ord Sewer	

## **Project Description**

This project will relocate the existing lift station to a location east of Highway 1 to new force main location.

## **Project Justification**

The existing lift station & force main failed numerous times. The existing lift station, located west of Highway 1 was located on Army controlled land that was transferred to the CA State Parks and is now considered environmentally sensitive land. Additionally, relocating the lift station will eliminate two Highway 1 pipeline crossings.

PROJECT COSTS:	FY 22/23	FY 23/24	FY 24/25	FY 25/26	FY 26/27	OUT YEARS	Total
<b>Cost Category / Phasing</b>							
<b>Planning</b>							
External Services							0
Internal Services							0
<b>Design</b>							
External Services							0
Internal Services							0
<b>Construction</b>							
External Services	500,000						500,000
Internal Services							0
<b>Property / Easement Acquisitions</b>							
							0
<b>Other Project Costs</b>							
							0
<b>Estimated Cost By Fiscal Year</b>	<b>500,000</b>	<b>0</b>	<b>0</b>	<b>0</b>	<b>0</b>	<b>0</b>	<b>500,000</b>

Project Funding / Cost Centers	G L Code	% Cost Splits	FY 22/23	FY 23/24	FY 24/25	FY 25/26	FY 26/27	OUT YEARS	Total
01 - Marina Water		0%	0	0	0	0	0	0	0
02 - Marina Sewer		0%	0	0	0	0	0	0	0
03 - Ft Ord Water		0%	0	0	0	0	0	0	0
04 - Ft Ord Sewer		100%	500,000	0	0	0	0	0	500,000
<b>Funding By Fiscal Year</b>			<b>500,000</b>	<b>0</b>	<b>0</b>	<b>0</b>	<b>0</b>	<b>0</b>	<b>500,000</b>

# Capital Improvement Project Sheet

Project:	Booker Lift Station Replacement	Source: Development
Project No:	OS-0152	
Cost Center	Ord Sewer	

<b>Project Description</b>
Replace lift station and add capacity for development.

<b>Project Justification</b>
Project funded by developer. Project nearly complete, District will reimburse developer 75 percent of cost.

PROJECT COSTS:	FY 22/23	FY 23/24	FY 24/25	FY 25/26	FY 26/27	OUT YEARS	Total
<b>Cost Category / Phasing</b>							
<b>Planning</b>							
External Services							0
Internal Services							0
<b>Design</b>							
External Services							0
Internal Services							0
<b>Construction</b>							
External Services	610,500						610,500
Internal Services							0
<b>Property / Easement Acquisitions</b>							
							0
<b>Other Project Costs</b>							
							0
<b>Estimated Cost By Fiscal Year</b>	<b>610,500</b>	<b>0</b>	<b>0</b>	<b>0</b>	<b>0</b>	<b>0</b>	<b>610,500</b>

Project Funding / Cost Centers	G L Code	% Cost Splits	FY 22/23	FY 23/24	FY 24/25	FY 25/26	FY 26/27	OUT YEARS	Total
01 - Marina Water		0%	0	0	0	0	0	0	0
02 - Marina Sewer		0%	0	0	0	0	0	0	0
03 - Ft Ord Water		0%	0	0	0	0	0	0	0
04 - Ft Ord Sewer		100%	610,500	0	0	0	0	0	610,500
<b>Funding By Fiscal Year</b>			<b>610,500</b>	<b>0</b>	<b>0</b>	<b>0</b>	<b>0</b>	<b>0</b>	<b>610,500</b>

# Capital Improvement Project Sheet

<b>Project:</b>	Miscellaneous Lift Station Improvements	<b>Source:</b> Operations/Maintenance
<b>Project No:</b>	OS-0153	
<b>Cost Center</b>	Ord Sewer	

## Project Description

This project will conduct programmatic improvements as issues at lift stations are identified.

## Project Justification

Ongoing programmatic lift station improvements address asset failures of District's aging lift stations and extend asset life.

PROJECT COSTS:	FY 22/23	FY 23/24	FY 24/25	FY 25/26	FY 26/27	OUT YEARS	Total
<b>Cost Category / Phasing</b>							
<b>Planning</b>							
External Services							0
Internal Services							0
<b>Design</b>							
External Services							0
Internal Services							0
<b>Construction</b>							
External Services	866,000						866,000
Internal Services	200,000						200,000
<b>Property / Easement Acquisitions</b>							0
<b>Other Project Costs</b>							0
<b>Estimated Cost By Fiscal Year</b>	<b>1,066,000</b>	<b>0</b>	<b>0</b>	<b>0</b>	<b>0</b>	<b>0</b>	<b>1,066,000</b>

Project Funding / Cost Centers	G L Code	% Cost Splits	FY 22/23	FY 23/24	FY 24/25	FY 25/26	FY 26/27	OUT YEARS	Total
01 - Marina Water		0%	0	0	0	0	0	0	0
02 - Marina Sewer		0%	0	0	0	0	0	0	0
03 - Ft Ord Water		0%	0	0	0	0	0	0	0
04 - Ft Ord Sewer		100%	1,066,000	0	0	0	0	0	1,066,000
<b>Funding By Fiscal Year</b>			<b>1,066,000</b>	<b>0</b>	<b>0</b>	<b>0</b>	<b>0</b>	<b>0</b>	<b>1,066,000</b>

# Capital Improvement Project Sheet

Project:	Gigling Lift Station Renovation	Source: Operations/Maintenance
Project No:	OS-0218	
Cost Center	Ord Sewer	

## Project Description

Replace existing wet pit/dry pit pump station with a wet pit submersible pumping station.

## Project Justification

Pumping station has reached end of asset life.

PROJECT COSTS:	FY 22/23	FY 23/24	FY 24/25	FY 25/26	FY 26/27	OUT YEARS	Total
<b>Cost Category / Phasing</b>							
<b>Planning</b>							
External Services							0
Internal Services							0
<b>Design</b>							
External Services	150,000						150,000
Internal Services							0
<b>Construction</b>							
External Services	850,000						850,000
Internal Services							0
<b>Property / Easement Acquisitions</b>							
							0
<b>Other Project Costs</b>							
							0
<b>Estimated Cost By Fiscal Year</b>	<b>1,000,000</b>	<b>0</b>	<b>0</b>	<b>0</b>	<b>0</b>	<b>0</b>	<b>1,000,000</b>

Project Funding / Cost Centers	G L Code	% Cost Splits	FY 22/23	FY 23/24	FY 24/25	FY 25/26	FY 26/27	OUT YEARS	Total
01 - Marina Water		0%	0	0	0	0	0	0	0
02 - Marina Sewer		0%		0	0	0	0	0	0
03 - Ft Ord Water		0%		0	0	0	0	0	0
04 - Ft Ord Sewer		100%	1,000,000	0	0	0	0	0	1,000,000
<b>Funding By Fiscal Year</b>			<b>1,000,000</b>	<b>0</b>	<b>0</b>	<b>0</b>	<b>0</b>	<b>0</b>	<b>1,000,000</b>

# Capital Improvement Project Sheet

Project:	Odor Control Program	Source: Operations/Maintenance
Project No:	OS-0348	
Cost Center	Ord Sewer	

## Project Description

This project will conduct programmatic odor control activities as sites are identified.

## Project Justification

Ongoing programmatic odor control efforts reduce corrosive environments that deteriorate sewer infrastructure and efforts also address public concerns at identified locations.

PROJECT COSTS:	FY 22/23	FY 23/24	FY 24/25	FY 25/26	FY 26/27	OUT YEARS	Total
<b>Cost Category / Phasing</b>							
<b>Planning</b>							
External Services							0
Internal Services							0
<b>Design</b>							
External Services							0
Internal Services							0
<b>Construction</b>							
External Services	100,000						100,000
Internal Services							0
<b>Property / Easement Acquisitions</b>							
							0
<b>Other Project Costs</b>							
							0
<b>Estimated Cost By Fiscal Year</b>	<b>100,000</b>	<b>0</b>	<b>0</b>	<b>0</b>	<b>0</b>	<b>0</b>	<b>100,000</b>

Project Funding / Cost Centers	G L Code	% Cost Splits	FY 22/23	FY 23/24	FY 24/25	FY 25/26	FY 26/27	OUT YEARS	Total
01 - Marina Water		0%	0	0	0	0	0	0	0
02 - Marina Sewer		0%	0	0	0	0	0	0	0
03 - Ft Ord Water		0%	0	0	0	0	0	0	0
04 - Ft Ord Sewer		100%	100,000	0	0	0	0	0	100,000
<b>Funding By Fiscal Year</b>			<b>100,000</b>	<b>0</b>	<b>0</b>	<b>0</b>	<b>0</b>	<b>0</b>	<b>100,000</b>

# Capital Improvement Project Sheet

<b>Project:</b>	CIPP Lining of 1st St. Sewer Lines (550')	<b>Source:</b> Operations/Maintenance
<b>Project No:</b>	OS-2301	
<b>Cost Center</b>	Ord Sewer	

## Project Description

Rehabilitate 550 LF of clay pipe through cured in place pipe (CIPP) methods.

## Project Justification

TV inspection indicates clay pipe is in poor condition.

PROJECT COSTS:	FY 22/23	FY 23/24	FY 24/25	FY 25/26	FY 26/27	OUT YEARS	Total
<b>Cost Category / Phasing</b>							
<b>Planning</b>							
External Services							0
Internal Services							0
<b>Design</b>							
External Services							0
Internal Services							0
<b>Construction</b>							
External Services	70,000						70,000
Internal Services							0
<b>Property / Easement Acquisitions</b>							
							0
<b>Other Project Costs</b>							
							0
<b>Estimated Cost By Fiscal Year</b>	<b>70,000</b>	<b>0</b>	<b>0</b>	<b>0</b>	<b>0</b>	<b>0</b>	<b>70,000</b>

Project Funding / Cost Centers	G L Code	% Cost Splits	FY 22/23	FY 23/24	FY 24/25	FY 25/26	FY 26/27	OUT YEARS	Total
01 - Marina Water		0%	0	0	0	0	0	0	0
02 - Marina Sewer		0%	0	0	0	0	0	0	0
03 - Ft Ord Water		0%	0	0	0	0	0	0	0
04 - Ft Ord Sewer		100%	70,000	0	0	0	0	0	70,000
<b>Funding By Fiscal Year</b>			<b>70,000</b>	<b>0</b>	<b>0</b>	<b>0</b>	<b>0</b>	<b>0</b>	<b>70,000</b>

# Capital Improvement Project Sheet

Project:	Hatten Lift Station Improvements	Source: Operations/Maintenance
Project No:	OS-2303	
Cost Center	Ord Sewer	

## Project Description

Replacement of existing lift station and adding SCADA.

## Project Justification

Pumping equipment needs replacement to extend asset life.

PROJECT COSTS:	FY 22/23	FY 23/24	FY 24/25	FY 25/26	FY 26/27	OUT YEARS	Total
Cost Category / Phasing							
Planning							
External Services							0
Internal Services							0
Design							
External Services							0
Internal Services							0
Construction							
External Services							0
Internal Services	100,000						100,000
Property / Easement Acquisitions							
							0
Other Project Costs							
							0
Estimated Cost By Fiscal Year	100,000	0	0	0	0	0	100,000

Project Funding / Cost Centers	G L Code	% Cost Splits	FY 22/23	FY 23/24	FY 24/25	FY 25/26	FY 26/27	OUT YEARS	Total
01 - Marina Water		0%	0	0	0	0	0	0	0
02 - Marina Sewer		0%	0	0	0	0	0	0	0
03 - Ft Ord Water		0%	0	0	0	0	0	0	0
04 - Ft Ord Sewer		100%	100,000	0	0	0	0	0	100,000
Funding By Fiscal Year			100,000	0	0	0	0	0	100,000

# Capital Improvement Project Sheet

Project:	Hodges Lift Station Improvements	Source: Operations/Maintenance
Project No:	OS-2304	
Cost Center	Ord Sewer	

## Project Description

Replace pumps and associated piping as necessary.

## Project Justification

Pumps have reached end of asset life and need replacement.

PROJECT COSTS:	FY 22/23	FY 23/24	FY 24/25	FY 25/26	FY 26/27	OUT YEARS	Total
Cost Category / Phasing							
Planning							
External Services							0
Internal Services							0
Design							
External Services							0
Internal Services							0
Construction							
External Services							0
Internal Services	150,000						150,000
Property / Easement Acquisitions							
							0
Other Project Costs							
							0
Estimated Cost By Fiscal Year	150,000	0	0	0	0	0	150,000

Project Funding / Cost Centers	G L Code	% Cost Splits	FY 22/23	FY 23/24	FY 24/25	FY 25/26	FY 26/27	OUT YEARS	Total
01 - Marina Water		0%	0	0	0	0	0	0	0
02 - Marina Sewer		0%	0	0	0	0	0	0	0
03 - Ft Ord Water		0%	0	0	0	0	0	0	0
04 - Ft Ord Sewer		100%	150,000	0	0	0	0	0	150,000
Funding By Fiscal Year			150,000	0	0	0	0	0	150,000

# Capital Improvement Project Sheet

Project:	Lightfighter Manhole Rehabilitation and Lining	Source: Operations/Maintenance
Project No:	OS-2305	
Cost Center	Ord Sewer	

## Project Description

Rehabilitate and line 21 sewer manholes along Lightfighter.

## Project Justification

Manholes are deteriorated and need refurbishment to extend asset life.

PROJECT COSTS:	FY 22/23	FY 23/24	FY 24/25	FY 25/26	FY 26/27	OUT YEARS	Total
Cost Category / Phasing							
Planning							
External Services							0
Internal Services							0
Design							
External Services							0
Internal Services							0
Construction							
External Services	150,000						150,000
Internal Services							0
Property / Easement Acquisitions							
							0
Other Project Costs							
							0
Estimated Cost By Fiscal Year	150,000	0	0	0	0	0	150,000

Project Funding / Cost Centers	G L Code	% Cost Splits	FY 22/23	FY 23/24	FY 24/25	FY 25/26	FY 26/27	OUT YEARS	Total
01 - Marina Water		0%	0	0	0	0	0	0	0
02 - Marina Sewer		0%	0	0	0	0	0	0	0
03 - Ft Ord Water		0%	0	0	0	0	0	0	0
04 - Ft Ord Sewer		100%	150,000	0	0	0	0	0	150,000
Funding By Fiscal Year			150,000	0	0	0	0	0	150,000

# Capital Improvement Project Sheet

<b>Project:</b>	Imjin parkway Pipeline, Reservation Rd to Abrams Drive	<b>Source:</b> Master Plan
<b>Project No:</b>	OW-0193	
<b>Cost Center</b>	Ord Water	

<b>Project Description</b>
Install new 12-inch pipeline in Imjin Road from Reserveration Road to Abrams drive. Project nearing completion.

<b>Project Justification</b>
Project will increase Zone B hydraulic reliability.

PROJECT COSTS:	FY 22/23	FY 23/24	FY 24/25	FY 25/26	FY 26/27	OUT YEARS	Total
<b>Cost Category / Phasing</b>							
<b>Planning</b>							
External Services							0
Internal Services							0
<b>Design</b>							
External Services							0
Internal Services							0
<b>Construction</b>							
External Services	318,044						318,044
Internal Services							0
<b>Property / Easement Acquisitions</b>							
							0
<b>Other Project Costs</b>							
							0
<b>Estimated Cost By Fiscal Year</b>	<b>318,044</b>	<b>0</b>	<b>0</b>	<b>0</b>	<b>0</b>	<b>0</b>	<b>318,044</b>

Project Funding / Cost Centers	G L Code	% Cost Splits	FY 22/23	FY 23/24	FY 24/25	FY 25/26	FY 26/27	OUT YEARS	Total
01 - Marina Water		0%	0	0	0	0	0	0	0
02 - Marina Sewer		0%	0	0	0	0	0	0	0
03 - Ft Ord Water		100%	318,044	0	0	0	0	0	318,044
04 - Ft Ord Sewer		0%	0	0	0	0	0	0	0
<b>Funding By Fiscal Year</b>			<b>318,044</b>	<b>0</b>	<b>0</b>	<b>0</b>	<b>0</b>	<b>0</b>	<b>318,044</b>

# Capital Improvement Project Sheet

<b>Project:</b>	Gigling Road Water Pipeline Replacement	<b>Source:</b> Operations/Maintenance
<b>Project No:</b>	OW-0201	
<b>Cost Center:</b>	Ord Water	

## Project Description

Replace existing pipeline. FY budget for design only.

## Project Justification

Pipeline is failing.

PROJECT COSTS:	FY 22/23	FY 23/24	FY 24/25	FY 25/26	FY 26/27	OUT YEARS	Total
<b>Cost Category / Phasing</b>							
<b>Planning</b>							
External Services							0
Internal Services							0
<b>Design</b>							
External Services	99,000						99,000
Internal Services							0
<b>Construction</b>							
External Services							0
Internal Services							0
<b>Property / Easement Acquisitions</b>							
							0
<b>Other Project Costs</b>							
							0
<b>Estimated Cost By Fiscal Year</b>	<b>99,000</b>	<b>0</b>	<b>0</b>	<b>0</b>	<b>0</b>	<b>0</b>	<b>99,000</b>

Project Funding / Cost Centers	G L Code	% Cost Splits	FY 22/23	FY 23/24	FY 24/25	FY 25/26	FY 26/27	OUT YEARS	Total
01 - Marina Water		0%	0	0	0	0	0	0	0
02 - Marina Sewer		0%	0	0	0	0	0	0	0
03 - Ft Ord Water		100%	99,000	0	0	0	0	0	99,000
04 - Ft Ord Sewer		0%	0	0	0	0	0	0	0
<b>Funding By Fiscal Year</b>			<b>99,000</b>	<b>0</b>	<b>0</b>	<b>0</b>	<b>0</b>	<b>0</b>	<b>99,000</b>

# Capital Improvement Project Sheet

Project:	D Zone Booster Pump Replacement	Source: Operations/Maintenance
Project No:	OW-0306	
Cost Center	Ord Water	

## Project Description

Replace one undersized D-Zone booster pump with a larger pump, new motor and motor control center.

## Project Justification

Currently one of the D-Zone pumps is undersized and near the end of its useful life. Replacing it with a larger pump and motor will also extend the life of the other existing pump. The motor control center is also in need of replacement.

PROJECT COSTS:	FY 22/23	FY 23/24	FY 24/25	FY 25/26	FY 26/27	OUT YEARS	Total
Cost Category / Phasing							
Planning							
External Services							0
Internal Services							0
Design							
External Services							0
Internal Services							0
Construction							
External Services	100,000						100,000
Internal Services							0
Property / Easement Acquisitions							0
Other Project Costs							0
Estimated Cost By Fiscal Year	100,000	0	0	0	0	0	100,000

Project Funding / Cost Centers	G L Code	% Cost Splits	FY 22/23	FY 23/24	FY 24/25	FY 25/26	FY 26/27	OUT YEARS	Total
01 - Marina Water		0%	0	0	0	0	0	0	0
02 - Marina Sewer		0%	0	0	0	0	0	0	0
03 - Ft Ord Water		100%	100,000	0	0	0	0	0	100,000
04 - Ft Ord Sewer		0%	0	0	0	0	0	0	0
Funding By Fiscal Year			100,000	0	0	0	0	0	100,000

# Capital Improvement Project Sheet

<b>Project:</b>	East Garrison Second Supply	<b>Source:</b> Master Plan
<b>Project No:</b>	OW-2302	
<b>Cost Center</b>	Ord Water	

## Project Description

Add a second supply pipeline connection between East Garrison and F Reservoir via Wikens Gate alignment. Approximately 4,000 LF of 12-inch pipe with appurtenances.

## Project Justification

East Garrison system only has one supply source and needs a second source for redundancy and emergencies.

PROJECT COSTS:	FY 22/23	FY 23/24	FY 24/25	FY 25/26	FY 26/27	OUT YEARS	Total
<b>Cost Category / Phasing</b>							
<b>Planning</b>							
External Services							0
Internal Services							0
<b>Design</b>							
External Services	200,000						200,000
Internal Services							0
<b>Construction</b>							
External Services	1,050,000						1,050,000
Internal Services							0
<b>Property / Easement Acquisitions</b>							
							0
<b>Other Project Costs</b>							
							0
<b>Estimated Cost By Fiscal Year</b>	<b>1,250,000</b>	<b>0</b>	<b>0</b>	<b>0</b>	<b>0</b>	<b>0</b>	<b>1,250,000</b>

Project Funding / Cost Centers	G L Code	% Cost Splits	FY 22/23	FY 23/24	FY 24/25	FY 25/26	FY 26/27	OUT YEARS	Total
01 - Marina Water		0%	0	0	0	0	0	0	0
02 - Marina Sewer		0%	0	0	0	0	0	0	0
03 - Ft Ord Water		100%	1,250,000	0	0	0	0	0	1,250,000
04 - Ft Ord Sewer		0%	0	0	0	0	0	0	0
<b>Funding By Fiscal Year</b>			<b>1,250,000</b>	<b>0</b>	<b>0</b>	<b>0</b>	<b>0</b>	<b>0</b>	<b>1,250,000</b>

# Capital Improvement Project Sheet

Project:	Ord blight removal and demolition	Source: Operations/Maintenance
Project No:	OW-2306	
Cost Center	Ord Community Water; Ord Community Sewer	

## **Project Description**

Demolish of military structures located at the MCWD corporation yard and Ord wastewater treatment facility.

## **Project Justification**

FORA initiated project to remove aging structures and improve site safety.

PROJECT COSTS:	FY 22/23	FY 23/24	FY 24/25	FY 25/26	FY 26/27	OUT YEARS	Total
<b>Cost Category / Phasing</b>							
<b>Planning</b>							
External Services	35,000						35,000
Internal Services							0
<b>Design</b>							
External Services	50,000						50,000
Internal Services							0
<b>Construction</b>							
External Services	885,000						885,000
Internal Services							0
<b>Property / Easement Acquisitions</b>							
							0
<b>Other Project Costs</b>							
							0
<b>Estimated Cost By Fiscal Year</b>	<b>970,000</b>	<b>0</b>	<b>0</b>	<b>0</b>	<b>0</b>	<b>0</b>	<b>970,000</b>

Project Funding / Cost Centers	G L Code	% Cost Splits	FY 22/23	FY 23/24	FY 24/25	FY 25/26	FY 26/27	OUT YEARS	Total
01 - Marina Water		0%	0	0	0	0	0	0	0
02 - Marina Sewer		0%	0	0	0	0	0	0	0
03 - Ft Ord Water		50%	485,000	0	0	0	0	0	485,000
04 - Ft Ord Sewer		50%	485,000	0	0	0	0	0	485,000
<b>Funding By Fiscal Year</b>			<b>970,000</b>	<b>0</b>	<b>0</b>	<b>0</b>	<b>0</b>	<b>0</b>	<b>970,000</b>

# Capital Improvement Project Sheet

<b>Project:</b>	Recycled Urban Water Augmentation Project - Distribution System	<b>Source:</b> 2020 Water Master Plan
<b>Project No:</b>	RW-0174	
<b>Cost Center:</b>	Recycled Water	

## Project Description

Complete the Recycled Water distribution laterals off of the transmission main as identified, including Preston Park.

## Project Justification

Construction needs to be completed in order to implement Recycled Water as a water source to meet the needs of MCWD's customers and to augment the current groundwater supply source for FORA.

PROJECT COSTS:	FY 21/22	FY 22/23	FY 23/24	FY 24/25	FY 25/26	OUT YEARS	Total
<b>Cost Category / Phasing</b>							
<b>Planning</b>							
External Services							0
Internal Services							0
<b>Design</b>							
External Services	270,000						270,000
Internal Services	15,000						15,000
<b>Construction</b>							
External Services	2,509,896						2,509,896
Internal Services	15,000						15,000
<b>Property Easement / Acquisitions</b>							0
<b>Other Project Costs</b>							0
<b>Estimated Cost By Fiscal Year</b>	<b>2,809,896</b>	<b>0</b>	<b>0</b>	<b>0</b>	<b>0</b>	<b>0</b>	<b>2,809,896</b>

Project Funding / Cost Centers	G L CODE	% Cost Splits	FY 21/22	FY 22/23	FY 23/24	FY 24/25	FY 25/26	OUT YEARS	Total
01 - Marina Water		0%	0	0	0	0	0	0	0
02 - Marina Sewer		0%	0	0	0	0	0	0	0
03 - Ft Ord Water		0%	0	0	0	0	0	0	0
04 - Ft Ord Sewer		0%	0	0	0	0	0	0	0
05- Recycled Water		100%	2,809,896	0	0	0	0	0	2,809,896
<b>Funding By Fiscal Year</b>			<b>2,809,896</b>	<b>0</b>	<b>0</b>	<b>0</b>	<b>0</b>	<b>0</b>	<b>2,809,896</b>

# Capital Improvement Project Sheet

Project:	RUWAP - Onsite Recycled Water Conversions	Source: Master Plan
Project No:	RW-2307	
Cost Center	Recycled Water	

## **Project Description**

Provide onsite system improvements for recycled water sites as identified.

## **Project Justification**

Programmatic budgeting to provide onsite recycled water system improvements as sites are constructed and request assistance.

PROJECT COSTS:	FY 22/23	FY 23/24	FY 24/25	FY 25/26	FY 26/27	OUT YEARS	Total
<b>Cost Category / Phasing</b>							
<b>Planning</b>							
External Services							0
Internal Services							0
<b>Design</b>							
External Services							0
Internal Services							0
<b>Construction</b>							
External Services	400,000						400,000
Internal Services							0
<b>Property / Easement Acquisitions</b>							
							0
<b>Other Project Costs</b>							
							0
<b>Estimated Cost By Fiscal Year</b>	<b>400,000</b>	<b>0</b>	<b>0</b>	<b>0</b>	<b>0</b>	<b>0</b>	<b>400,000</b>

Project Funding / Cost Centers	G L Code	% Cost Splits	FY 22/23	FY 23/24	FY 24/25	FY 25/26	FY 26/27	OUT YEARS	Total
01 - Marina Water		0%	0	0	0	0	0	0	0
02 - Marina Sewer		0%	0	0	0	0	0	0	0
03 - Ft Ord Water		0%	0	0	0	0	0	0	0
04 - Ft Ord Sewer		0%	0	0	0	0	0	0	0
05- Recycled Water		100%	400,000	0	0	0	0	0	400,000
<b>Funding By Fiscal Year</b>			<b>400,000</b>	<b>0</b>	<b>0</b>	<b>0</b>	<b>0</b>	<b>0</b>	<b>0</b>

# Capital Improvement Project Sheet

Project:	Corp Yard Demoition and Rehab	Source: Master Plans
Project No:	WD-0106	
Cost Center	Ord Community Water; Ord Community Sewer; Marina Water; Marina Sewer	

## Project Description

This project includes supplemental blight removal and rehabilitation of buildigs not covered by Project OW2306.

## Project Justification

Project supplements budget needs to repair/replace existing facilities at corporation yard.

PROJECT COSTS:	FY 22/23	FY 23/24	FY 24/25	FY 25/26	FY 26/27	OUT YEARS	Total
<b>Cost Category / Phasing</b>							
<b>Planning</b>							
External Services							0
Internal Services							0
<b>Design</b>							
External Services							0
Internal Services							0
<b>Construction</b>							
External Services	250,000						250,000
Internal Services							0
<b>Property / Easement Acquisitions</b>							
							0
<b>Other Project Costs</b>							
							0
<b>Estimated Cost By Fiscal Year</b>	<b>250,000</b>	<b>0</b>	<b>0</b>	<b>0</b>	<b>0</b>	<b>0</b>	<b>250,000</b>

Project Funding / Cost Centers	G L Code	% Cost Splits	FY 22/23	FY 23/24	FY 24/25	FY 25/26	FY 26/27	OUT YEARS	Total
01 - Marina Water		26%	65,000	0	0	0	0	0	65,000
02 - Marina Sewer		5%	12,500	0	0	0	0	0	12,500
03 - Ft Ord Water		57%	142,500	0	0	0	0	0	142,500
04 - Ft Ord Sewer		12%	30,000	0	0	0	0	0	30,000
<b>Funding By Fiscal Year</b>			<b>250,000</b>	<b>0</b>	<b>0</b>	<b>0</b>	<b>0</b>	<b>0</b>	<b>250,000</b>

# Capital Improvement Project Sheet

Project:	Beach Office Corrosion Improvements	Source: Operations/Maintenance
Project No:	WD-0379	
Cost Center	Ord Community Water; Ord Community Sewer; Marina Water; Marina Sewer	

<b>Project Description</b>
Replace doors and frames.

<b>Project Justification</b>
Doors and frames are corroded and failing.

PROJECT COSTS:	FY 22/23	FY 23/24	FY 24/25	FY 25/26	FY 26/27	OUT YEARS	Total
<b>Cost Category / Phasing</b>							
<b>Planning</b>							
External Services							0
Internal Services							0
<b>Design</b>							
External Services							0
Internal Services							0
<b>Construction</b>							
External Services	70,000						70,000
Internal Services							0
<b>Property / Easement Acquisitions</b>							
							0
<b>Other Project Costs</b>							
							0
<b>Estimated Cost By Fiscal Year</b>	<b>70,000</b>	<b>0</b>	<b>0</b>	<b>0</b>	<b>0</b>	<b>0</b>	<b>70,000</b>

Project Funding / Cost Centers	G L Code	% Cost Splits	FY 22/23	FY 23/24	FY 24/25	FY 25/26	FY 26/27	OUT YEARS	Total
01 - Marina Water		26%	18,200	0	0	0	0	0	18,200
02 - Marina Sewer		5%	3,500	0	0	0	0	0	3,500
03 - Ft Ord Water		57%	39,900	0	0	0	0	0	39,900
04 - Ft Ord Sewer		12%	8,400	0	0	0	0	0	8,400
<b>Funding By Fiscal Year</b>			<b>70,000</b>	<b>0</b>	<b>0</b>	<b>0</b>	<b>0</b>	<b>0</b>	<b>70,000</b>

# Capital Improvement Project Sheet

Project:	SCADA Improvements	Source: Operations/Maintenance
Project No:	WD-2308	
Cost Center	Ord Water, Marina Water	

## Project Description

Project includes a variety of efforts including: upgrade to latest InTouch version, update interface screens, add pressuring, pump efficiency, and power monitoring, new switches and alarms at various sites, chlorine dosing capabilities, cellular backup, and others.

## Project Justification

Remote monitoring and control capabilities need enhancement to increase operational efficiency and risk management.

PROJECT COSTS:	FY 22/23	FY 23/24	FY 24/25	FY 25/26	FY 26/27	OUT YEARS	Total
<b>Cost Category / Phasing</b>							
<b>Planning</b>							
External Services							0
Internal Services							0
<b>Design</b>							
External Services							0
Internal Services							0
<b>Construction</b>							
External Services	400,000						400,000
Internal Services							0
<b>Property / Easement Acquisitions</b>							
							0
<b>Other Project Costs</b>							
							0
<b>Estimated Cost By Fiscal Year</b>	<b>400,000</b>	<b>0</b>	<b>0</b>	<b>0</b>	<b>0</b>	<b>0</b>	<b>400,000</b>

Project Funding / Cost Centers	G L Code	% Cost Splits	FY 22/23	FY 23/24	FY 24/25	FY 25/26	FY 26/27	OUT YEARS	Total
01 - Marina Water		50%	200,000	0	0	0	0	0	200,000
02 - Marina Sewer		0%	0	0	0	0	0	0	0
03 - Ft Ord Water		50%	200,000	0	0	0	0	0	200,000
04 - Ft Ord Sewer		0%	0	0	0	0	0	0	0
<b>Funding By Fiscal Year</b>			<b>400,000</b>	<b>0</b>	<b>0</b>	<b>0</b>	<b>0</b>	<b>0</b>	<b>400,000</b>

# Capital Improvement Project Sheet

Project:	Water/Sewer Pipeline Replacement Program (R/R)	Source: Operations/Maintenance
Project No:	WD-2309	
Cost Center	Ord Community Water; Ord Community Sewer; Marina Water; Marina Sewer	

## Project Description

Replace failing and/or old pipeline through an annual program.

## Project Justification

Programmatic budgeting to provide pipeline replacement needs as identified to prevent systematic pipeline failures over time.

PROJECT COSTS:	FY 22/23	FY 23/24	FY 24/25	FY 25/26	FY 26/27	OUT YEARS	Total
Cost Category / Phasing							
Planning							
External Services							0
Internal Services							0
Design							
External Services	75,000						75,000
Internal Services							0
Construction							
External Services	200,000						200,000
Internal Services							0
Property / Easement Acquisitions							
							0
Other Project Costs							
							0
Estimated Cost By Fiscal Year	275,000	0	0	0	0	0	275,000

Project Funding / Cost Centers	G L Code	% Cost Splits	FY 22/23	FY 23/24	FY 24/25	FY 25/26	FY 26/27	OUT YEARS	Total
01 - Marina Water		26%	71,500	0	0	0	0	0	71,500
02 - Marina Sewer		5%	13,750	0	0	0	0	0	13,750
03 - Ft Ord Water		57%	156,750	0	0	0	0	0	156,750
04 - Ft Ord Sewer		12%	33,000	0	0	0	0	0	33,000
Funding By Fiscal Year			275,000	0	0	0	0	0	275,000

# APPENDIX B

## 22/23 UNREPRESENTED (EXEMPT)

### MANAGEMENT CLASSIFICATION & SALARY SCHEDULE

PERCENTAGE BETWEEN RANGES = 2.5%  
PERCENTAGE BETWEEN STEPS = 5.0%

7/1/22

CLASSIFICATION	RANGE	STEP 1	STEP 2	STEP 3	STEP 4	STEP 5	STEP 6
HR/RISK ADMINISTRATOR	U30	107,997.93223 8,999.82769 4,153.76662 51.92208	113,397.82884 9,449.81907 4,361.45496 54.51819	119,067.72028 9,922.31002 4,579.52770 57.24410	125,021.10630 10,418.42552 4,808.50409 60.10630	131,272.16161 10,939.34680 5,048.92929 63.11162	137,835.76969 11,486.31414 5,301.37576 66.26720
	U31	110,697.88053 9,224.82338 4,257.61079 53.22013	116,232.77456 9,686.06455 4,470.49133 55.88114	122,044.41329 10,170.36777 4,694.01590 58.67520	128,146.63395 10,678.88616 4,928.71669 61.60896	134,553.96565 11,212.83047 5,175.15253 64.68941	141,281.66393 11,773.47199 5,433.91015 67.92388
	U32	113,465.32755 9,455.44396 4,364.05106 54.55064	119,138.59393 9,928.21616 4,582.25361 57.27817	125,095.52362 10,424.62697 4,811.36629 60.14208	131,350.29980 10,945.85832 5,051.93461 63.14918	137,917.81479 11,493.15123 5,304.53134 66.30664	144,813.70553 12,067.80879 5,569.75791 69.62197
	U33	116,301.96074 9,691.83006 4,473.15234 55.91440	122,117.05877 10,176.42156 4,696.80995 58.71012	128,222.91171 10,685.24264 4,931.65045 61.64563	134,634.05730 11,219.50477 5,178.23297 64.72791	141,365.76016 11,780.48001 5,437.14462 67.96431	148,434.04817 12,369.50401 5,709.00185 71.36252
	U34	119,209.50976 9,934.12581 4,584.98114 57.31226	125,169.98524 10,430.83210 4,814.23020 60.17788	131,428.48451 10,952.37371 5,054.94171 63.18677	137,999.90873 11,499.99239 5,307.68880 66.34611	144,899.90417 12,074.99201 5,573.07324 69.66342	152,144.89938 12,678.74161 5,851.72690 73.14659
	U35	122,189.74750 10,182.47896 4,699.60567 58.74507	128,299.23487 10,691.60291 4,934.58596 61.68232	134,714.19662 11,226.18305 5,181.31525 64.76644	141,449.90645 11,787.49220 5,440.38102 68.00476	148,522.40177 12,376.86681 5,712.40007 71.40500	155,948.52186 12,995.71015 5,998.02007 74.97525
	U36	125,244.49119 10,437.04093 4,817.09581 60.21370	131,506.71575 10,958.89298 5,057.95061 63.22438	138,082.05153 11,506.83763 5,310.84814 66.38560	144,986.15411 12,082.17951 5,576.39054 69.70488	152,235.46182 12,686.28848 5,855.21007 73.19013	159,847.23491 13,320.60291 6,147.97057 76.84963
	U37	128,375.60347 10,697.96696 4,937.52321 61.71904	134,794.38364 11,232.86530 5,184.39937 64.80499	141,534.10282 11,794.50857 5,443.61934 68.04524	148,610.80796 12,384.23400 5,715.80031 71.44750	156,041.34836 13,003.44570 6,001.59032 75.01988	163,843.41578 13,653.61798 6,301.66984 78.77087
	U38	131,584.99355 10,965.41613 5,060.96129 63.26202	138,164.24323 11,513.68694 5,314.00936 66.42512	145,072.45539 12,089.37128 5,579.70982 69.74637	152,326.07816 12,693.83985 5,858.69531 73.23369	159,942.38207 13,328.53184 6,151.63008 76.89538	167,939.50117 13,994.95843 6,459.21158 80.74014

# 22/23 UNREPRESENTED (EXEMPT) MANAGEMENT CLASSIFICATION & SALARY SCHEDULE

PERCENTAGE BETWEEN RANGES = 2.5%  
PERCENTAGE BETWEEN STEPS = 5.0%

7/1/22

CLASSIFICATION	RANGE	STEP 1	STEP 2	STEP 3	STEP 4	STEP 5	STEP 6
U39		134,874.61839	141,618.34931	148,699.26678	156,134.23012	163,940.94162	172,137.98870
		11,239.55153	11,801.52911	12,391.60556	13,011.18584	13,661.74514	14,344.83239
		5,187.48532	5,446.85959	5,719.20257	6,005.16270	6,305.42083	6,620.69187
		64.84357	68.08574	71.49003	75.06453	78.81776	82.75865
U40		138,246.48385	145,158.80804	152,416.74845	160,037.58587	168,039.46516	176,441.43842
		11,520.54032	12,096.56734	12,701.39570	13,336.46549	14,003.28876	14,703.45320
		5,317.17246	5,583.03108	5,862.18263	6,155.29176	6,463.05635	6,786.20917
		66.46466	69.78789	73.27728	76.94115	80.78820	84.82761
U41		141,702.64595	148,787.77825	156,227.16716	164,038.52552	172,240.45179	180,852.47438
		11,808.55383	12,398.98152	13,018.93060	13,669.87713	14,353.37098	15,071.03953
		5,450.10177	5,722.60686	6,008.73720	6,309.17406	6,624.63276	6,955.86440
		68.12627	71.53259	75.10921	78.86468	82.80791	86.94830
U42		145,245.21210	152,507.47270	160,132.84634	168,139.48865	176,546.46309	185,373.78624
		12,103.76767	12,708.95606	13,344.40386	14,011.62405	14,712.20526	15,447.81552
		5,586.35431	5,865.67203	6,158.95563	6,466.90341	6,790.24858	7,129.76101
		69.82943	73.32090	76.98695	80.83629	84.87811	89.12201
U43		148,876.34240	156,320.15952	164,136.16749	172,342.97587	180,960.12466	190,008.13090
		12,406.36187	13,026.67996	13,678.01396	14,361.91466	15,080.01039	15,834.01091
		5,726.01317	6,012.31383	6,312.92952	6,628.57599	6,960.00479	7,308.00503
		71.57516	75.15392	78.91162	82.85720	87.00006	91.35006
U44		152,598.25096	160,228.16351	168,239.57168	176,651.55027	185,484.12778	194,758.33417
		12,716.52091	13,352.34696	14,019.96431	14,720.96252	15,457.01065	16,229.86118
		5,869.16350	6,162.62167	6,470.75276	6,794.29039	7,134.00491	7,490.70516
		73.36454	77.03277	80.88441	84.92863	89.17506	93.63381
U45		156,413.20723	164,233.86759	172,445.56097	181,067.83902	190,121.23097	199,627.29252
		13,034.43394	13,686.15563	14,370.46341	15,088.98659	15,843.43591	16,635.60771
		6,015.89259	6,316.68722	6,632.52158	6,964.14765	7,312.35504	7,677.97279
		75.19866	78.95859	82.90652	87.05185	91.40444	95.97466
U46		160,323.53741	168,339.71428	176,756.70000	185,594.53500	194,874.26175	204,617.97484
		13,360.29478	14,028.30952	14,729.72500	15,466.21125	16,239.52181	17,051.49790
		6,166.28990	6,474.60440	6,798.33462	7,138.25135	7,495.16391	7,869.92211
		77.07862	80.93255	84.97918	89.22814	93.68955	98.37403
U47		164,331.62585	172,548.20714	181,175.61750	190,234.39837	199,746.11829	209,733.42421
		13,694.30215	14,379.01726	15,097.96812	15,852.86653	16,645.50986	17,477.78535
		6,320.44715	6,636.46951	6,968.29298	7,316.70763	7,682.54301	8,066.67016
		79.00559	82.95587	87.10366	91.45885	96.03179	100.83338

# 22/23 UNREPRESENTED (EXEMPT) MANAGEMENT CLASSIFICATION & SALARY SCHEDULE

PERCENTAGE BETWEEN RANGES = 2.5%  
PERCENTAGE BETWEEN STEPS = 5.0%

7/1/22

CLASSIFICATION	RANGE	STEP 1	STEP 2	STEP 3	STEP 4	STEP 5	STEP 6
GENERAL MANAGER	U48	168,439.91650	176,861.91232	185,705.00794	194,990.25833	204,739.77125	214,976.75981
		14,036.65971	14,738.49269	15,475.41733	16,249.18819	17,061.64760	17,914.72998
		6,478.45833	6,802.38124	7,142.50031	7,499.62532	7,874.60659	8,268.33692
		80.98073	85.02977	89.28125	93.74532	98.43258	103.35421
	U49	172,650.91441	181,283.46013	190,347.63313	199,865.01479	209,858.26553	220,351.17881
		14,387.57620	15,106.95501	15,862.30276	16,655.41790	17,488.18879	18,362.59823
		6,640.41978	6,972.44077	7,321.06281	7,687.11595	8,071.47175	8,475.04534
		83.00525	87.15551	91.51329	96.08895	100.89340	105.93807
	U50	176,967.18727	185,815.54663	195,106.32396	204,861.64016	215,104.72217	225,859.95828
		14,747.26561	15,484.62889	16,258.86033	17,071.80335	17,925.39351	18,821.66319
		6,806.43028	7,146.75179	7,504.08938	7,879.29385	8,273.25854	8,686.92147
		85.08038	89.33440	93.80112	98.49117	103.41573	108.58652
	U51	181,391.36695	190,460.93530	199,983.98206	209,983.18117	220,482.34022	231,506.45723
		15,115.94725	15,871.74461	16,665.33184	17,498.59843	18,373.52835	19,292.20477
		6,976.59104	7,325.42059	7,691.69162	8,076.27620	8,480.09001	8,904.09451
		87.20739	91.56776	96.14615	100.95345	106.00113	111.30118
	CONTRACT						263,000.00

# 22/23 TEAMSTERS UNIT CLASSIFICATION & SALARY SCHEDULE

PERCENTAGE BETWEEN RANGES = 2.5%  
PERCENTAGE BETWEEN STEPS = 5.0%

7/1/22

CLASSIFICATION	RANGE	STEP 1	STEP 2	STEP 3	STEP 4	STEP 5	STEP 6
EXEC. ASSISTANT TO GM/ BOARD	T20	84,368.02765 7,030.66897 3,244.92414 40.56155	88,586.42903 7,382.20242 3,407.17035 42.58963	93,015.75049 7,751.31254 3,577.52886 44.71911	97,666.53801 8,138.87817 3,756.40531 46.95507	102,549.86491 8,545.82208 3,944.22557 49.30282	107,677.35816 8,973.11318 4,141.43685 51.76796
	T21	86,477.22834 7,206.43570 3,326.04724 41.57559	90,801.08976 7,566.75748 3,492.34961 43.65437	95,341.14425 7,945.09535 3,666.96709 45.83709	100,108.20146 8,342.35012 3,850.31544 48.12894	105,113.61153 8,759.46763 4,042.83121 50.53539	110,369.29211 9,197.44101 4,244.97277 53.06216
	T22	88,639.15905 7,386.59659 3,409.19843 42.61498	93,071.11700 7,755.92642 3,579.65835 44.74573	97,724.67285 8,143.72274 3,758.64126 46.98302	102,610.90650 8,550.90887 3,946.57333 49.33217	107,741.45182 8,978.45432 4,143.90199 51.79877	113,128.52441 9,427.37703 4,351.09709 54.38871
	T23	90,855.13803 7,571.26150 3,494.42839 43.68035	95,397.89493 7,949.82458 3,669.14980 45.86437	100,167.78967 8,347.31581 3,852.60730 48.15759	105,176.17916 8,764.68160 4,045.23766 50.56547	110,434.98812 9,202.91568 4,247.49954 53.09374	115,956.73752 9,663.06146 4,459.87452 55.74843
	T24	93,126.51648 7,760.54304 3,581.78910 44.77236	97,782.84230 8,148.57019 3,760.87855 47.01098	102,671.98442 8,555.99870 3,948.92248 49.36153	107,805.58364 8,983.79864 4,146.36860 51.82961	113,195.86282 9,432.98857 4,353.68703 54.42109	118,855.65596 9,904.63800 4,571.37138 57.14214
	T25	95,454.67939 7,954.55662 3,671.33382 45.89167	100,227.41336 8,352.28445 3,854.90051 48.18626	105,238.78403 8,769.89867 4,047.64554 50.59557	110,500.72323 9,208.39360 4,250.02782 53.12535	116,025.75939 9,668.81328 4,462.52921 55.78162	121,827.04736 10,152.25395 4,685.65567 58.57070
	T26	97,841.04637 8,153.42053 3,763.11717 47.03896	102,733.09869 8,561.09156 3,951.27303 49.39091	107,869.75363 8,989.14614 4,148.83668 51.86046	113,263.24131 9,438.60344 4,356.27851 54.45348	118,926.40337 9,910.53361 4,574.09244 57.17616	124,872.72354 10,406.06030 4,802.79706 60.03496
	T27	100,287.07253 8,357.25604 3,857.19510 48.21494	105,301.42616 8,775.11885 4,050.05485 50.62569	110,566.49747 9,213.87479 4,252.55759 53.15697	116,094.82234 9,674.56853 4,465.18547 55.81482	121,899.56346 10,158.29695 4,688.44475 58.60556	127,994.54163 10,666.21180 4,922.86699 61.53584
	T28	102,794.24935 8,566.18745 3,953.62497 49.42031	107,933.96181 8,994.49682 4,151.30622 51.89133	113,330.65991 9,444.22166 4,358.87153 54.48589	118,997.19290 9,916.43274 4,576.81511 57.21019	124,947.05255 10,412.25438 4,805.65587 60.07070	131,194.40517 10,932.86710 5,045.93866 63.07423

# 22/23 TEAMSTERS UNIT CLASSIFICATION & SALARY SCHEDULE

PERCENTAGE BETWEEN RANGES = 2.5%  
PERCENTAGE BETWEEN STEPS = 5.0%

7/1/22

CLASSIFICATION	RANGE	STEP 1	STEP 2	STEP 3	STEP 4	STEP 5	STEP 6
ASSOC. ENGR IT ADMIN.	T29	105,364.10558	110,632.31086	116,163.92640	121,972.12272	128,070.72886	134,474.26530
		8,780.34213	9,219.35924	9,680.32720	10,164.34356	10,672.56074	11,206.18878
		4,052.46560	4,255.08888	4,467.84332	4,691.23549	4,925.79726	5,172.08713
		50.65582	53.18861	55.84804	58.64044	61.57247	64.65109
	T30	107,998.20822	113,398.11863	119,068.02456	125,021.42579	131,272.49708	137,836.12193
		8,999.85069	9,449.84322	9,922.33538	10,418.45215	10,939.37476	11,486.34349
		4,153.77724	4,361.46610	4,579.53941	4,808.51638	5,048.94220	5,301.38931
		51.92222	54.51833	57.24424	60.10645	63.11178	66.26737
	T31	110,698.16343	116,233.07160	122,044.72518	128,146.96144	134,554.30951	141,282.02498
		9,224.84695	9,686.08930	10,170.39376	10,678.91345	11,212.85913	11,773.50208
		4,257.62167	4,470.50275	4,694.02789	4,928.72929	5,175.16575	5,433.92404
		53.22027	55.88128	58.67535	61.60912	64.68957	67.92405
	T32	113,465.61751	119,138.89839	125,095.84331	131,350.63547	137,918.16725	144,814.07561
		9,455.46813	9,928.24153	10,424.65361	10,945.88629	11,493.18060	12,067.83963
		4,364.06221	4,582.26532	4,811.37859	5,051.94752	5,304.54489	5,569.77214
		54.55078	57.27832	60.14223	63.14934	66.30681	69.62215
SR. CIVIL ENGR	T33	116,302.25795	122,117.37085	128,223.23939	134,634.40136	141,366.12143	148,434.42750
		9,691.85483	10,176.44757	10,685.26995	11,219.53345	11,780.51012	12,369.53562
		4,473.16377	4,696.82196	4,931.66305	5,178.24621	5,437.15852	5,709.01644
		55.91455	58.71027	61.64579	64.72808	67.96448	71.36271
WATER RES MANAGER	T34	119,209.81440	125,170.30512	131,428.82037	138,000.26139	144,900.27446	152,145.28819
		9,934.15120	10,430.85876	10,952.40170	11,500.02178	12,075.02287	12,678.77402
		4,584.99286	4,814.24250	5,054.95463	5,307.70236	5,573.08748	5,851.74185
		57.31241	60.17803	63.18693	66.34628	69.66359	73.14677
	T35	122,190.05976	128,299.56275	134,714.54088	141,450.26793	148,522.78132	155,948.92039
		10,182.50498	10,691.63023	11,226.21174	11,787.52233	12,376.89844	12,995.74337
		4,699.61768	4,934.59857	5,181.32850	5,440.39492	5,712.41467	5,998.03540
		58.74522	61.68248	64.76661	68.00494	71.40518	74.97544
	T36	125,244.81125	131,507.05181	138,082.40441	144,986.52463	152,235.85086	159,847.64340
		10,437.06760	10,958.92098	11,506.86703	12,082.21039	12,686.32090	13,320.63695
		4,817.10813	5,057.96353	5,310.86171	5,576.40479	5,855.22503	6,147.98628
		60.21385	63.22454	66.38577	69.70506	73.19031	76.84983
O&M MANAGER	T37	128,375.93153	134,794.72811	141,534.46452	148,611.18774	156,041.74713	163,843.83448
		10,697.99429	11,232.89401	11,794.53871	12,384.26565	13,003.47893	13,653.65287
		4,937.53583	5,184.41262	5,443.63325	5,715.81491	6,001.60566	6,301.68594
		61.71920	64.80516	68.04542	71.44769	75.02007	78.77107

# 22/23 TEAMSTERS UNIT CLASSIFICATION & SALARY SCHEDULE

PERCENTAGE BETWEEN RANGES = 2.5%  
PERCENTAGE BETWEEN STEPS = 5.0%

7/1/22

CLASSIFICATION	RANGE	STEP 1	STEP 2	STEP 3	STEP 4	STEP 5	STEP 6
DIR OF ADMIN SVCS	T38	131,585.32982 10,965.44415 5,060.97422 63.26218	138,164.59631 11,513.71636 5,314.02294 66.42529	145,072.82613 12,089.40218 5,579.72408 69.74655	152,326.46743 12,693.87229 5,858.71029 73.23388	159,942.79081 13,328.56590 6,151.64580 76.89557	167,939.93035 13,994.99420 6,459.22809 80.74035
	T39	134,874.96307 11,239.58026 5,187.49858 64.84373	141,618.71122 11,801.55927 5,446.87351 68.08592	148,699.64678 12,391.63723 5,719.21718 71.49021	156,134.62912 13,011.21909 6,005.17804 75.06473	163,941.36058 13,661.78005 6,305.43695 78.81796	172,138.42861 14,344.86905 6,620.70879 82.75886
	T40	138,246.83714 11,520.56976 5,317.18604 66.46483	145,159.17900 12,096.59825 5,583.04535 69.78807	152,417.13795 12,701.42816 5,862.19761 73.27747	160,037.99485 13,336.49957 6,155.30749 76.94134	168,039.89459 14,003.32455 6,463.07287 80.78841	176,441.88932 14,703.49078 6,786.22651 84.82783
	T41	141,703.00807 11,808.58401 5,450.11570 68.12645	148,788.15848 12,399.01321 5,722.62148 71.53277	156,227.56640 13,018.96387 6,008.75255 75.10941	164,038.94472 13,669.91206 6,309.19018 78.86488	172,240.89196 14,353.40766 6,624.64969 82.80812	180,852.93655 15,071.07805 6,955.88218 86.94853
	T42	145,245.58327 12,103.79861 5,586.36859 69.82961	152,507.86244 12,708.98854 5,865.68702 73.32109	160,133.25556 13,344.43796 6,158.97137 76.98714	168,139.91834 14,011.65986 6,466.91994 80.83650	176,546.91425 14,712.24285 6,790.26593 84.87832	185,374.25997 15,447.85500 7,129.77923 89.12224
	T43	148,876.72286 12,406.39357 5,726.02780 71.57535	156,320.55900 13,026.71325 6,012.32919 75.15411	164,136.58695 13,678.04891 6,312.94565 78.91182	172,343.41630 14,361.95136 6,628.59293 82.85741	180,960.58711 15,080.04893 6,960.02258 87.00028	190,008.61647 15,834.05137 7,308.02371 91.35030
	T44	152,598.64093 12,716.55341 5,869.17850 73.36473	160,228.57297 13,352.38108 6,162.63742 77.03297	168,240.00162 14,020.00014 6,470.76929 80.88462	176,652.00170 14,721.00014 6,794.30776 84.92885	185,484.60179 15,457.05015 7,134.02315 89.17529	194,758.83188 16,229.90266 7,490.72430 93.63405
DISTRICT ENGR	T44	152,598.64093 12,716.55341 5,869.17850 73.36473	160,228.57297 13,352.38108 6,162.63742 77.03297	168,240.00162 14,020.00014 6,470.76929 80.88462	176,652.00170 14,721.00014 6,794.30776 84.92885	185,484.60179 15,457.05015 7,134.02315 89.17529	194,758.83188 16,229.90266 7,490.72430 93.63405

# 22/23 EMPLOYEES ASSOCIATION CLASSIFICATION & SALARY SCHEDULE

PERCENTAGE BETWEEN RANGES = 2.5%  
PERCENTAGE BETWEEN STEPS = 5.0%

7/1/22

CLASSIFICATION	RANGE	STEP 1	STEP 2	STEP 3	STEP 4	STEP 5	STEP 6
CUST SERV/ BILLING TECH I	1	47,568.22301 3,964.01858 1,829.54704 22.86934	49,946.63416 4,162.21951 1,921.02439 24.01280	52,443.96587 4,370.33049 2,017.07561 25.21345	55,066.16416 4,588.84701 2,117.92939 26.47412	57,819.47237 4,818.28936 2,223.82586 27.79782	60,710.44598 5,059.20383 2,335.01715 29.18771
	2	48,757.42858 4,063.11905 1,875.28571 23.44107	51,195.30001 4,266.27500 1,969.05000 24.61313	53,755.06501 4,479.58875 2,067.50250 25.84378	56,442.81826 4,703.56819 2,170.87763 27.13597	59,264.95918 4,938.74660 2,279.42151 28.49277	62,228.20713 5,185.68393 2,393.39258 29.91741
	3	49,976.36430 4,164.69702 1,922.16786 24.02710	52,475.18251 4,372.93188 2,018.27625 25.22845	55,098.94164 4,591.57847 2,119.19006 26.48988	57,853.88872 4,821.15739 2,225.14957 27.81437	60,746.58316 5,062.21526 2,336.40704 29.20509	63,783.91231 5,315.32603 2,453.22740 30.66534
	4	51,225.77340 4,268.81445 1,970.22205 24.62778	53,787.06207 4,482.25517 2,068.73316 25.85916	56,476.41518 4,706.36793 2,172.16981 27.15212	59,300.23594 4,941.68633 2,280.77831 28.50973	62,265.24773 5,188.77064 2,394.81722 29.93522	65,378.51012 5,448.20918 2,514.55808 31.43198
	5	52,506.41774 4,375.53481 2,019.47761 25.24347	55,131.73863 4,594.31155 2,120.45149 26.50564	57,888.32556 4,824.02713 2,226.47406 27.83093	60,782.74184 5,065.22849 2,337.79776 29.22247	63,821.87893 5,318.48991 2,454.68765 30.68360	67,012.97287 5,584.41441 2,577.42203 32.21778
	6	53,819.07818 4,484.92318 2,069.96455 25.87456	56,510.03209 4,709.16934 2,173.46277 27.16828	59,335.53370 4,944.62781 2,282.13591 28.52670	62,302.31038 5,191.85920 2,396.24271 29.95303	65,417.42590 5,451.45216 2,516.05484 31.45069	68,688.29720 5,724.02477 2,641.85758 33.02322
	7	55,164.55514 4,597.04626 2,121.71366 26.52142	57,922.78289 4,826.89857 2,227.79934 27.84749	60,818.92204 5,068.24350 2,339.18931 29.23987	63,859.86814 5,321.65568 2,456.14877 30.70186	67,052.86155 5,587.73846 2,578.95621 32.23695	70,405.50463 5,867.12539 2,707.90402 33.84880
	8	56,543.66902 4,711.97242 2,174.75650 27.18446	59,370.85247 4,947.57104 2,283.49433 28.54368	62,339.39509 5,194.94959 2,397.66904 29.97086	65,456.36484 5,454.69707 2,517.55249 31.46941	68,729.18309 5,727.43192 2,643.43012 33.04288	72,165.64224 6,013.80352 2,775.60162 34.69502
	9	57,957.26074 4,829.77173 2,229.12541 27.86407	60,855.12378 5,071.26031 2,340.58168 29.25727	63,897.87997 5,324.82333 2,457.61077 30.72013	67,092.77397 5,591.06450 2,580.49131 32.25614	70,447.41266 5,870.61772 2,709.51587 33.86895	73,969.78330 6,164.14861 2,844.99167 35.56240
MAINT WORKER METER READER							

# 22/23 EMPLOYEES ASSOCIATION CLASSIFICATION & SALARY SCHEDULE

PERCENTAGE BETWEEN RANGES = 2.5%  
PERCENTAGE BETWEEN STEPS = 5.0%

7/1/22

CLASSIFICATION	RANGE	STEP 1	STEP 2	STEP 3	STEP 4	STEP 5	STEP 6
CUST SERV/ BILLING TECH II	10	59,406.19226	62,376.50187	65,495.32697	68,770.09331	72,208.59798	75,819.02788
		4,950.51602	5,198.04182	5,457.94391	5,730.84111	6,017.38317	6,318.25232
		2,284.85355	2,399.09623	2,519.05104	2,645.00359	2,777.25377	2,916.11646
		28.56067	29.98870	31.48814	33.06254	34.71567	36.45146
	11	60,891.34707	63,935.91442	67,132.71014	70,489.34565	74,013.81293	77,714.50358
		5,074.27892	5,327.99287	5,594.39251	5,874.11214	6,167.81774	6,476.20863
		2,341.97489	2,459.07363	2,582.02731	2,711.12868	2,846.68511	2,989.01937
		29.27469	30.73842	32.27534	33.88911	35.58356	37.36274
	12	62,413.63074	65,534.31228	68,811.02789	72,251.57929	75,864.15825	79,657.36617
		5,201.13590	5,461.19269	5,734.25232	6,020.96494	6,322.01319	6,638.11385
		2,400.52426	2,520.55047	2,646.57800	2,778.90690	2,917.85224	3,063.74485
		30.00655	31.50688	33.08222	34.73634	36.47315	38.29681
	13	63,973.97151	67,172.67009	70,531.30359	74,057.86877	77,760.76221	81,648.80032
		5,331.16429	5,597.72251	5,877.60863	6,171.48906	6,480.06352	6,804.06669
		2,460.53737	2,583.56423	2,712.74245	2,848.37957	2,990.79855	3,140.33847
		30.75672	32.29455	33.90928	35.60474	37.38498	39.25423
ADMIN ASSISTANT WATER RES ANALYST II	14	65,573.32080	68,851.98684	72,294.58618	75,909.31549	79,704.78126	83,690.02033
		5,464.44340	5,737.66557	6,024.54885	6,325.77629	6,642.06511	6,974.16836
		2,522.05080	2,648.15334	2,780.56101	2,919.58906	3,065.56851	3,218.84694
		31.52563	33.10192	34.75701	36.49486	38.31961	40.23559
ENGINEERING TECHNICIAN SYS OPERATOR I ACCT TECH	15	67,212.65382	70,573.28651	74,101.95084	77,807.04838	81,697.40080	85,782.27084
		5,601.05448	5,881.10721	6,175.16257	6,483.92070	6,808.11673	7,148.52257
		2,585.10207	2,714.35717	2,850.07503	2,992.57878	3,142.20772	3,299.31811
		32.31378	33.92946	35.62594	37.40723	39.27760	41.24148
	16	68,892.97016	72,337.61867	75,954.49961	79,752.22459	83,739.83582	87,926.82761
		5,741.08085	6,028.13489	6,329.54163	6,646.01872	6,978.31965	7,327.23563
		2,649.72962	2,782.21610	2,921.32691	3,067.39325	3,220.76292	3,381.80106
		33.12162	34.77770	36.51659	38.34242	40.25954	42.27251
	17	70,615.29442	74,146.05914	77,853.36210	81,746.03020	85,833.33171	90,124.99830
		5,884.60787	6,178.83826	6,487.78017	6,812.16918	7,152.77764	7,510.41652
		2,715.97286	2,851.77151	2,994.36008	3,144.07808	3,301.28199	3,466.34609
		33.94966	35.64714	37.42950	39.30098	41.26602	43.32933

# 22/23 EMPLOYEES ASSOCIATION CLASSIFICATION & SALARY SCHEDULE

PERCENTAGE BETWEEN RANGES = 2.5%  
PERCENTAGE BETWEEN STEPS = 5.0%

7/1/22

CLASSIFICATION	RANGE	STEP 1	STEP 2	STEP 3	STEP 4	STEP 5	STEP 6
ADMIN ANALYST	18	72,380.67678	75,999.71062	79,799.69615	83,789.68096	87,979.16500	92,378.12325
		6,031.72306	6,333.30922	6,649.97468	6,982.47341	7,331.59708	7,698.17694
		2,783.87218	2,923.06579	3,069.21908	3,222.68004	3,383.81404	3,553.00474
		34.79840	36.53832	38.36524	40.28350	42.29768	44.41256
SYS OPERATOR II	19	74,190.19370	77,899.70338	81,794.68855	85,884.42298	90,178.64413	94,687.57634
		6,182.51614	6,491.64195	6,816.22405	7,157.03525	7,514.88701	7,890.63136
		2,853.46899	2,996.14244	3,145.94956	3,303.24704	3,468.40939	3,641.82986
		35.66836	37.45178	39.32437	41.29059	43.35512	45.52287
	20	76,044.94854	79,847.19597	83,839.55577	88,031.53356	92,433.11023	97,054.76574
		6,337.07905	6,653.93300	6,986.62965	7,335.96113	7,702.75919	8,087.89715
		2,924.80571	3,071.04600	3,224.59830	3,385.82821	3,555.11962	3,732.87561
		36.56007	38.38807	40.30748	42.32285	44.43900	46.66095
ASST ENGR SYS OP II-CROSS CONN CONT SPECIALIST ACCOUNTANT ELEC/MECH TECH	21	77,946.07225	81,843.37587	85,935.54466	90,232.32189	94,743.93799	99,481.13489
		6,495.50602	6,820.28132	7,161.29539	7,519.36016	7,895.32817	8,290.09457
		2,997.92586	3,147.82215	3,305.21326	3,470.47392	3,643.99761	3,826.19750
		37.47407	39.34778	41.31517	43.38092	45.54997	47.82747
	22	79,894.72406	83,889.46026	88,083.93328	92,488.12994	97,112.53644	101,968.16326
		6,657.89367	6,990.78836	7,340.32777	7,707.34416	8,092.71137	8,497.34694
		3,072.87400	3,226.51770	3,387.84359	3,557.23577	3,735.09756	3,921.85243
		38.41093	40.33147	42.34804	44.46545	46.68872	49.02316
LEAD OPERATOR WATER CONS SPECIALIST III	23	81,892.09216	85,986.69677	90,286.03161	94,800.33319	99,540.34985	104,517.36734
		6,824.34101	7,165.55806	7,523.83597	7,900.02777	8,295.02915	8,709.78061
		3,149.69585	3,307.18065	3,472.53968	3,646.16666	3,828.47499	4,019.89874
		39.37120	41.33976	43.40675	45.57708	47.85594	50.24873
	24	83,939.39447	88,136.36419	92,543.18240	97,170.34152	102,028.85860	107,130.30153
		6,994.94954	7,344.69702	7,711.93187	8,097.52846	8,502.40488	8,927.52513
		3,228.43825	3,389.86016	3,559.35317	3,737.32083	3,924.18687	4,120.39621
		40.35548	42.37325	44.49191	46.71651	49.05234	51.50495
	25	86,037.87933	90,339.77329	94,856.76196	99,599.60006	104,579.58006	109,808.55906
		7,169.82328	7,528.31444	7,904.73016	8,299.96667	8,714.96501	9,150.71326
		3,309.14920	3,474.60667	3,648.33700	3,830.75385	4,022.29154	4,223.40612
		41.36437	43.43258	45.60421	47.88442	50.27864	52.79258

# 22/23 EMPLOYEES ASSOCIATION CLASSIFICATION & SALARY SCHEDULE

PERCENTAGE BETWEEN RANGES = 2.5%  
PERCENTAGE BETWEEN STEPS = 5.0%

7/1/22

CLASSIFICATION	RANGE	STEP 1	STEP 2	STEP 3	STEP 4	STEP 5	STEP 6
CS/BILLING SUP	26	88,188.82631	92,598.26763	97,228.18101	102,089.59006	107,194.06956	112,553.77304
		7,349.06886	7,716.52230	8,102.34842	8,507.46584	8,932.83913	9,379.48109
		3,391.87794	3,561.47183	3,739.54542	3,926.52269	4,122.84883	4,328.99127
		42.39847	44.51840	46.74432	49.08153	51.53561	54.11239
	27	90,393.54697	94,913.22432	99,658.88553	104,641.82981	109,873.92130	115,367.61737
		7,532.79558	7,909.43536	8,304.90713	8,720.15248	9,156.16011	9,613.96811
		3,476.67488	3,650.50863	3,833.03406	4,024.68576	4,225.92005	4,437.21605
		43.45844	45.63136	47.91293	50.30857	52.82400	55.46520
	28	92,653.38564	97,286.05493	102,150.35767	107,257.87556	112,620.76933	118,251.80780
		7,721.11547	8,107.17124	8,512.52981	8,938.15630	9,385.06411	9,854.31732
		3,563.59176	3,741.77134	3,928.85991	4,125.30291	4,331.56805	4,548.14645
		44.54490	46.77214	49.11075	51.56629	54.14460	56.85183
	29	94,969.72028	99,718.20630	104,704.11661	109,939.32244	115,436.28857	121,208.10300
		7,914.14336	8,309.85052	8,725.34305	9,161.61020	9,619.69071	10,100.67525
		3,652.68155	3,835.31563	4,027.08141	4,228.43548	4,439.85725	4,661.85012
		45.65852	47.94145	50.33852	52.85544	55.49822	58.27313
O&M SUP	30	97,343.96329	102,211.16146	107,321.71953	112,687.80551	118,322.19578	124,238.30557
		8,111.99694	8,517.59679	8,943.47663	9,390.65046	9,860.18298	10,353.19213
		3,743.99859	3,931.19852	4,127.75844	4,334.14637	4,550.85368	4,778.39637
		46.79998	49.13998	51.59698	54.17683	56.88567	59.72995
ACCTG SUP	31	99,777.56237	104,766.44049	110,004.76252	115,505.00064	121,280.25068	127,344.26321
		8,314.79686	8,730.53671	9,167.06354	9,625.41672	10,106.68756	10,612.02193
		3,837.59855	4,029.47848	4,230.95240	4,442.50002	4,664.62503	4,897.85628
		47.96998	50.36848	52.88691	55.53125	58.30781	61.22320
	32	102,272.00143	107,385.60151	112,754.88158	118,392.62566	124,312.25694	130,527.86979
		8,522.66679	8,948.80013	9,396.24013	9,866.05214	10,359.35475	10,877.32248
		3,933.53852	4,130.21544	4,336.72621	4,553.56253	4,781.24065	5,020.30268
		49.16923	51.62769	54.20908	56.91953	59.76551	62.75378
	33	104,828.80147	110,070.24154	115,573.75362	121,352.44130	127,420.06337	133,791.06653
		8,735.73346	9,172.52013	9,631.14613	10,112.70344	10,618.33861	11,149.25554
		4,031.87698	4,233.47083	4,445.14437	4,667.40159	4,900.77167	5,145.81025
		50.39846	52.91839	55.56430	58.34252	61.25965	64.32263
	34	107,449.52151	112,821.99758	118,463.09746	124,386.25233	130,605.56495	137,135.84320
		8,954.12679	9,401.83313	9,871.92479	10,365.52103	10,883.79708	11,427.98693
		4,132.67390	4,339.30760	4,556.27298	4,784.08663	5,023.29096	5,274.45551
		51.65842	54.24134	56.95341	59.80108	62.79114	65.93069